

| | | | |
|--|------------------------|-----------------------------|---|
| WAAS CH 90200 W28A | APP CRS 277° | Rwy Idg TDZE Apt Elev | 5002 599 602 |
|--|------------------------|-----------------------------|---|

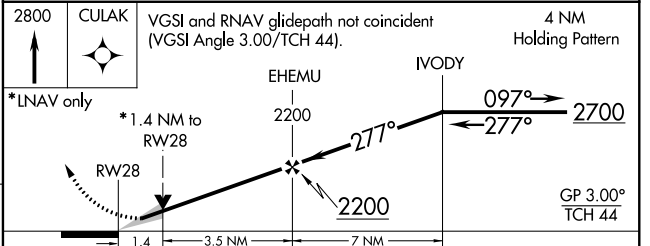
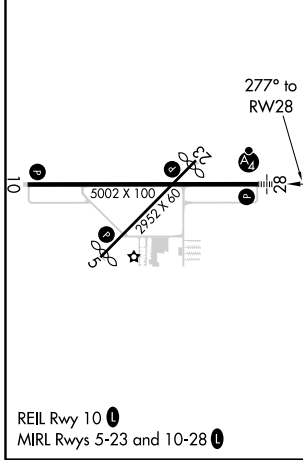
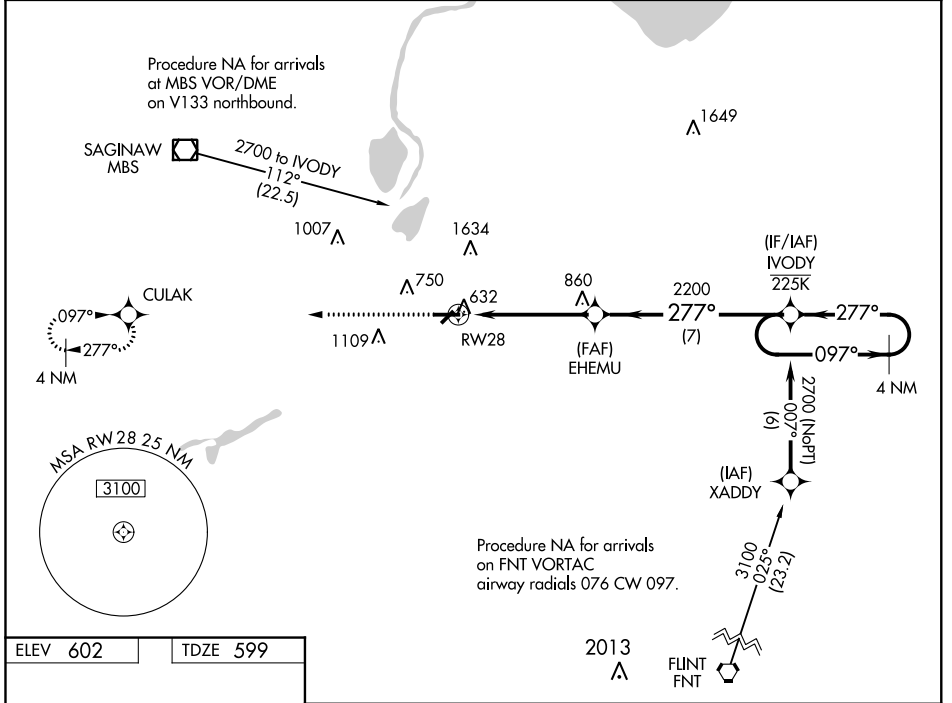
RNAV (GPS) RWY 28

SAGINAW COUNTY H W BROWNE (HYX)

⚠ Inop table does not apply to LPV DA. For uncompensated Baro-VNAV systems, LNAV/VNAV NA below -18°C (0°F) or above 54°C (130°F). Circling NA for Cat C north of Rwy 10-28. Circling Rwy 5, 23 NA at night. DME/DME RNP-0.3 NA. For inop ALS, increase LNAV/VNAV all Cats visibility to ½ SM.

MALSF MISSED APPROACH: Climb to 2800 direct CULAK and hold.

| | | |
|--------------------------|--|---------------------------------|
| AWOS-3 118.325 | SAGINAW APP CON * 120.95 235.625 | UNICOM 122.8 (CTAF) 0 |
|--------------------------|--|---------------------------------|



| CATEGORY | A | B | C | D |
|-------------------|--------|-------------|-------------------------|----|
| LPV DA | 804-¾ | 205 (300-¾) | | NA |
| LNAV/VNAV DA | 849-¾ | 250 (300-¾) | | NA |
| LNAV MDA | 1080-¾ | 481 (500-¾) | 1080-1½ 481 (500-1½) | NA |
| C CIRCLING | 1100-1 | 498 (500-1) | 1460-2½ 858 (900-2½) | NA |

EC-1, 24 MAY 2018 to 21 JUN 2018

EC-1, 24 MAY 2018 to 21 JUN 2018