

RNAV (GPS) RWY 9

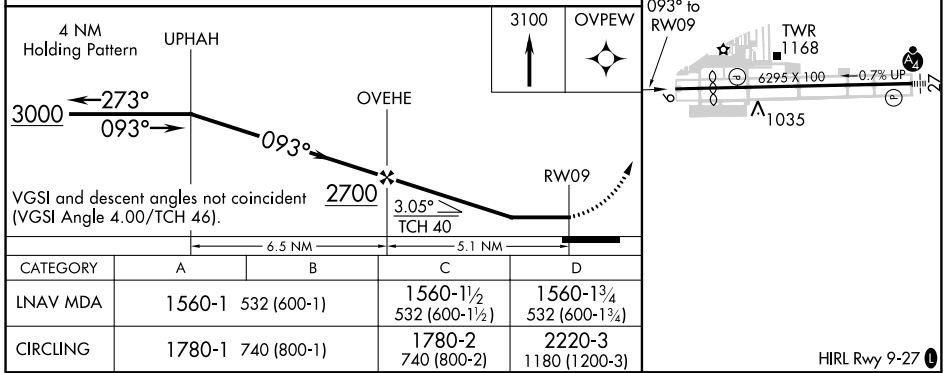
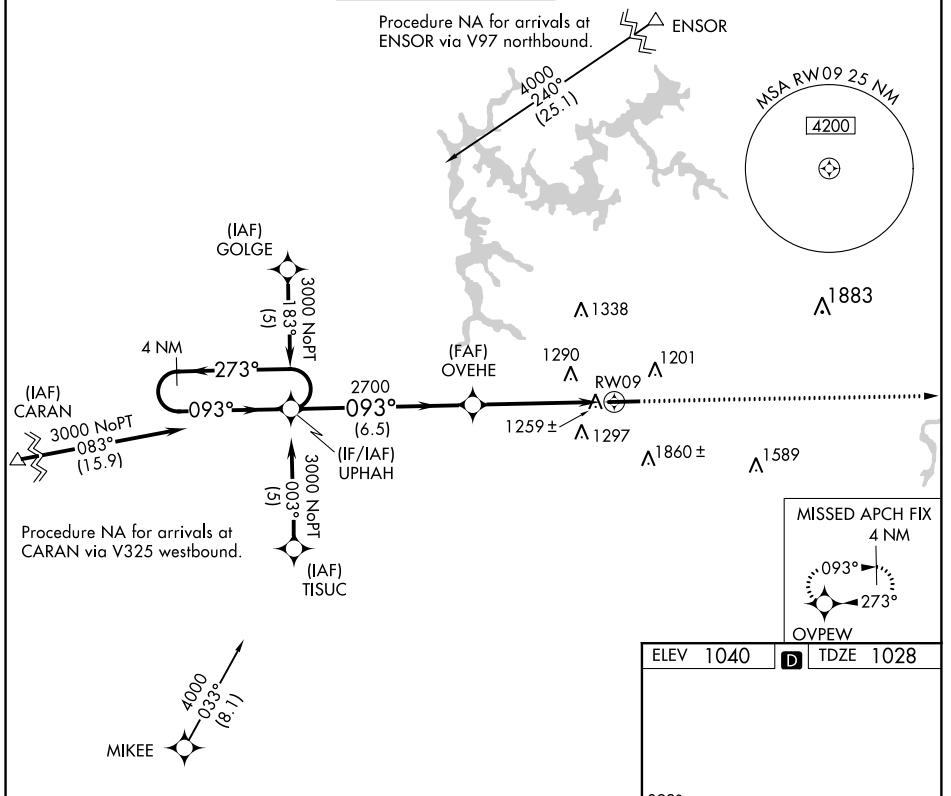
COBB COUNTY INTL-McCOLLUM FIELD (RYY)

APP CRS	Rwy Idg	5233
093°	TDZE	1028
	Apt Elev	1040

▼ DME/DME RNP-0.3 NA. Visibility reduction by helicopters NA. When local altimeter setting not received, use Hartsfield-Jackson Atlanta Intl altimeter
▲ NA setting and increase all MDA 60 feet and Circling Cat. B and C visibility ¼ mile.

MISSED APPROACH: Climb to 3100 direct OVPEW and hold.

ATIS 128.125	ATLANTA APP CON 121.0 268.7	McCOLLUM TOWER * 125.9 (CTAF) 0	GND CON 119.0	CLNC DEL 119.0 268.7	UNICOM 122.7
------------------------	---------------------------------------	---	-------------------------	--------------------------------	------------------------



SE-4, 24 MAY 2018 to 21 JUN 2018

SE-4, 24 MAY 2018 to 21 JUN 2018