

WAAS CH <b>97308</b> <b>W27A</b>	APP CRS <b>273°</b>	Rwy ldg TDZE <b>1011</b> Apt Elev <b>1040</b>	<b>5374</b> <b>1011</b> <b>1040</b>
--	------------------------	---	---

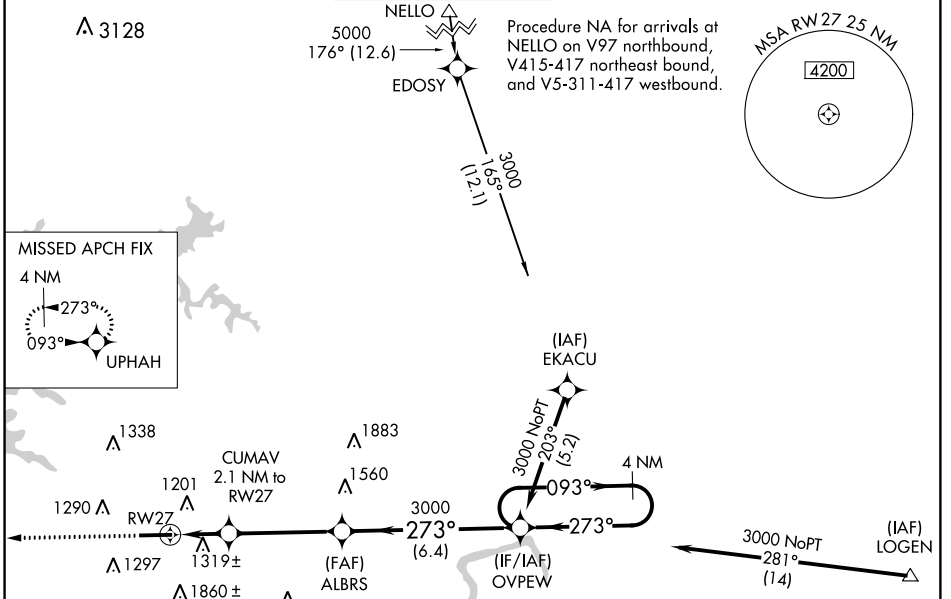
# RNAV (GPS) RWY 27

COBB COUNTY INTL-McCOLLUM FIELD (RYY)

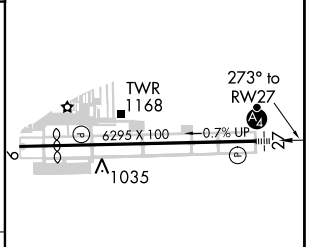
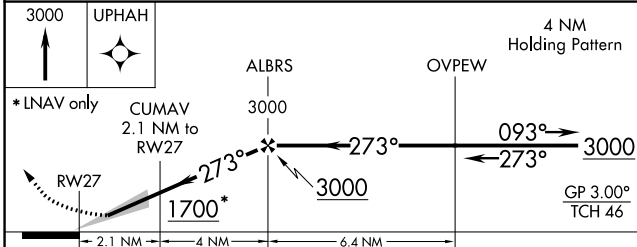
**Baro-VNAV NA** when using Hartsfield-Jackson Atlanta Intl altimeter setting.  
 For uncompensated Baro-VNAV systems, LNAV/VNAV NA below -17°C (2°F) or above 37°C (98°F). DME/DME RNP-0.3 NA. When local altimeter setting not received, use Hartsfield-Jackson Atlanta Intl altimeter setting and increase all DA/MDA 60 feet; increase LPV all Cats and LNAV Cats C and D visibility 1/8 mile; increase Circling Cat C visibility 1/4 mile.

**MALSRL** MISSED APPROACH: Climb to 3000 direct UPHAH and hold.

ATIS <b>128.125</b>	ATLANTA APP CON <b>121.0 268.7</b>	McCOLLUM TOWER * <b>125.9 (CTAF) 0</b>	GND CON <b>119.0</b>	CLNC DEL <b>119.0 268.7</b>	UNICOM <b>122.7</b>
------------------------	---------------------------------------	---	-------------------------	--------------------------------	------------------------



ELEV 1040	<b>D</b> TDZE 1011
-----------	--------------------



CATEGORY	A	B	C	D
LPV DA		1211-3/4	200 (200-3/4)	
LNAV/VNAV DA		1680-2 1/2	669 (700-2 1/2)	
LNAV MDA	1580-1	569 (600-1)	1580-1 3/4	569 (600-1 3/4)
CIRCLING	1780-1	740 (800-1)	1780-2 740 (800-2)	2220-3 1180 (1200-3)

HIRL Rwy 9-27 **0**

SE-4, 24 MAY 2018 to 21 JUN 2018

SE-4, 24 MAY 2018 to 21 JUN 2018