

LOC I-RYY <b>111.9</b>	APP CRS <b>273°</b>	Rwy ldg TDZE Apt Elev	<b>5374</b> <b>1011</b> <b>1040</b>
---------------------------	------------------------	-----------------------------	---

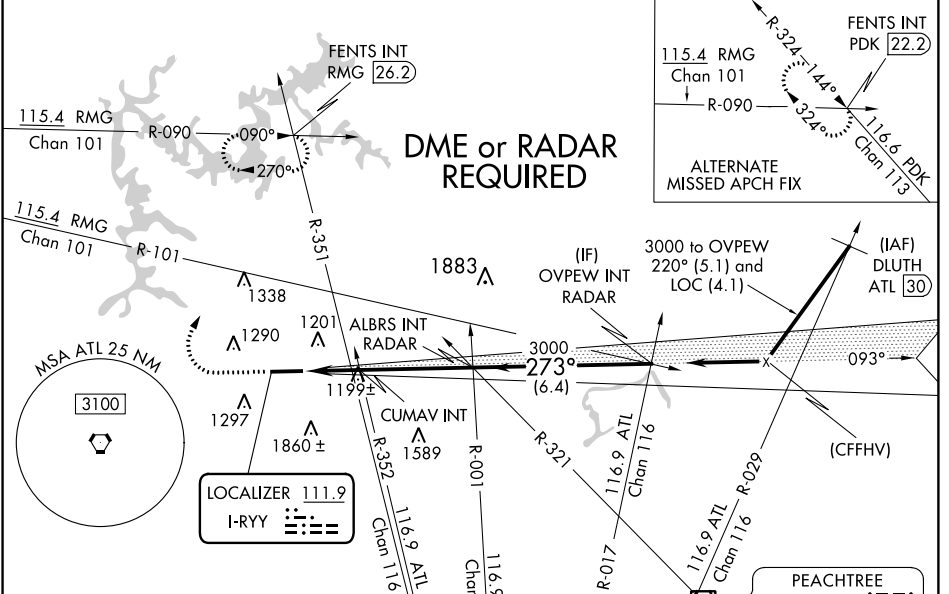
# ILS or LOC RWY 27

COBB COUNTY INTL-McCOLLUM FIELD (RYY)

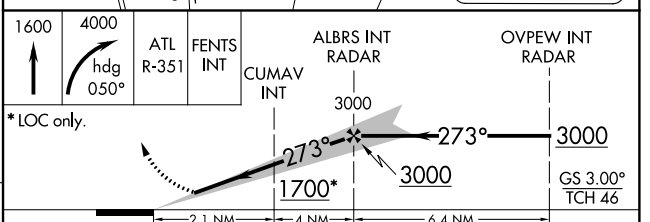
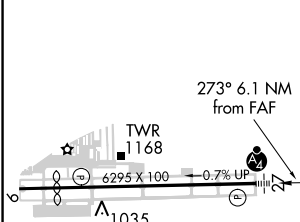
**⚠** Circling to Rwy 9 NA at night. When local altimeter setting not received, use Hartsfield-Jackson Atlanta Intl altimeter setting and increase all DA/MDA 60 feet; increase S-ILS 27 all Cats and CUMAV fix minimums S-LOC 27 Cats C and D visibility 1/8 mile; increase S-LOC 27 Cat B, Circling Cat C, and CUMAV fix minimums Circling Cat C visibility 1/4 mile; increase S-LOC 27 Cats C and D visibility 1/2 mile.

**MALSR** MISSED APPROACH: Climb to 1600 then climbing right turn to 4000 on heading 050° and ATL VORTAC R-351 to FENTS INT/ RMG 26.2 DME and hold, continue climb-in-hold to 4000.

ATIS <b>128.125</b>	ATLANTA APP CON <b>121.0 268.7</b>	McCOLLUM TOWER * <b>125.9 (CTAF) 0</b>	GND CON <b>119.0</b>	CLNC DEL <b>119.0 268.7</b>	UNICOM <b>122.7</b>
------------------------	---------------------------------------	---	-------------------------	--------------------------------	------------------------



ELEV 1040	<b>D</b> TDZE 1011
-----------	--------------------



CATEGORY	A	B	C	D
S-ILS 27	1211-3/4 200 (200-3/4)			
S-LOC 27	1700-1	689 (700-1)	1700-2	689 (700-2)
CIRCLING	1780-1	740 (800-1)	1780-2 740 (800-2)	2220-3 1180 (1200-3)
CUMAV FIX MINIMUMS (DUAL VOR RECEIVERS REQUIRED)				
S-LOC 27	1460-1	449 (500-1)	1460-1 3/8	449 (500-1 3/8)
CIRCLING	1780-1	740 (800-1)	1780-2 740 (800-2)	2220-3 1180 (1200-3)

**HIRL Rwy 9-27 0**

FAF to MAP 6.1 NM

Knots	60	90	120	150	180
Min:Sec	6:06	4:04	3:03	2:26	2:02

SE-4, 24 MAY 2018 to 21 JUN 2018

SE-4, 24 MAY 2018 to 21 JUN 2018