

VORTAC BTG 116.6 Chan 113	APP CRS 255°	Rwy Idg TDZE Apt Elev N/A N/A 58
---	------------------------	--

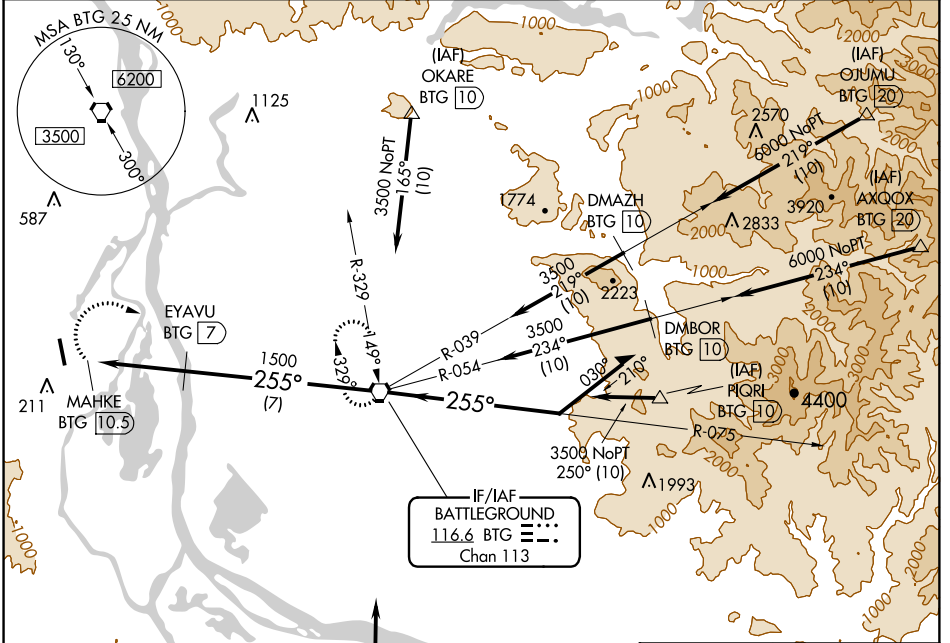
VOR/DME-A

SCAPOOSE INDUSTRIAL AIRPARK (SPB)

⚠ Circling NA west of Rwy 15-33. Helicopter visibility reduction below 1 SM NA. When local altimeter setting not received, use Portland Intl altimeter setting and increase all MDA 40 ft. Circling to Rwy 15 NA at night.

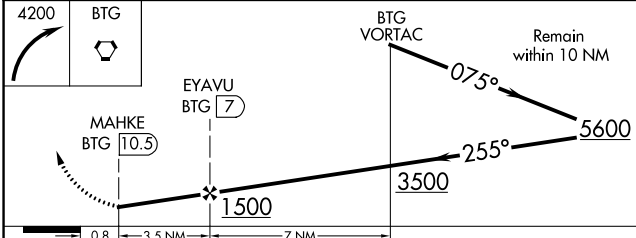
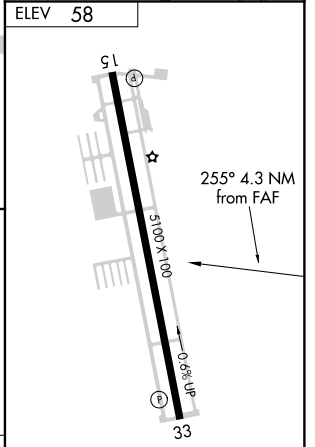
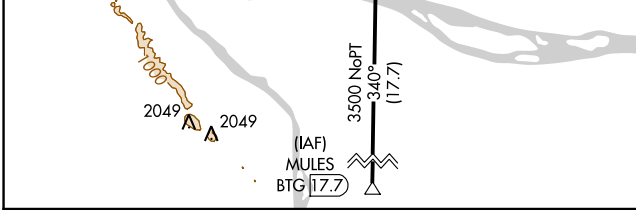
⚠ MISSED APPROACH: Climbing right turn to 4200 direct BTG VORTAC and hold, continue climb-in-hold to 4200.

ASOS 135.875	PORTLAND APP CON 124.35 299.2	CLNC DEL 121.65	UNICOM 122.8 (CTAF)
------------------------	---	---------------------------	-------------------------------



NW-1, 24 MAY 2018 to 21 JUN 2018

NW-1, 24 MAY 2018 to 21 JUN 2018



CATEGORY	A	B	C	D
CIRCLING	600-1 542 (600-1)		600-1½ 542 (600-1½)	620-2 562 (600-2)

REIL Rwy 15
MIRL Rwy 15-33