

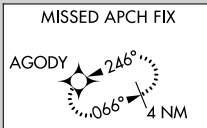
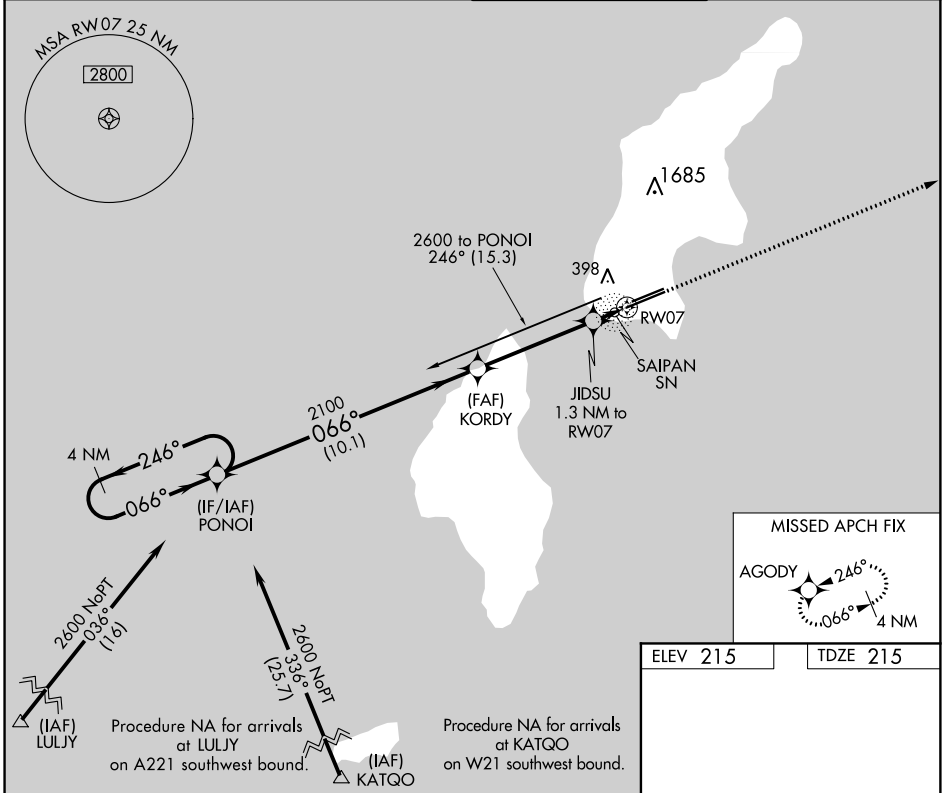
APP CRS	Rwy Idg	8700
066°	TDZE	215
	Apt Elev	215

RNAV (GPS) RWY 7

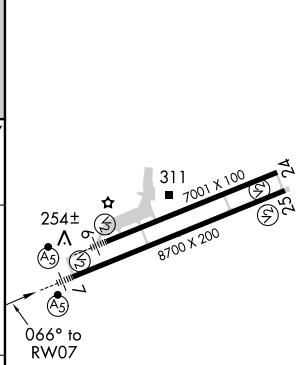
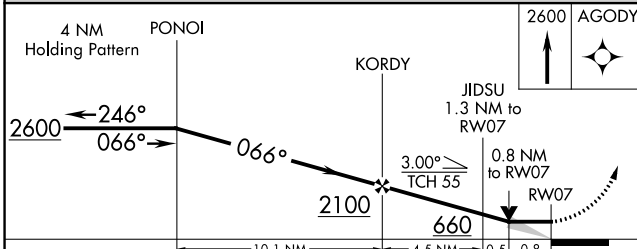
FRANCISCO C ADA/SAIPAN INTL (GSN)(PGSN)

	Circling NA north of Rwy 6-24. DME/DME RNP-0.3 NA.	MALSR 	MISSED APPROACH: Climb 2600 direct AGODY and hold.

ATIS 127.2	GUAM APP CON 118.4 290.5	SAIPAN TOWER 125.7 256.9	GND CON 121.8
----------------------	------------------------------------	------------------------------------	-------------------------



ELEV 215	TDZE 215
----------	----------



CATEGORY	A	B	C	D
LNAV MDA	520-½ 305 (400-½)			
CIRCLING	720-1	505 (600-1)	720-1½ 505 (600-1½)	780-2 565 (600-2)

REIL Rwy 6, 7, 24 and 25
 HIRL Rwy 7-25 and 6-24

PAC, 24 MAY 2018 to 19 JUL 2018

PAC, 24 MAY 2018 to 19 JUL 2018