


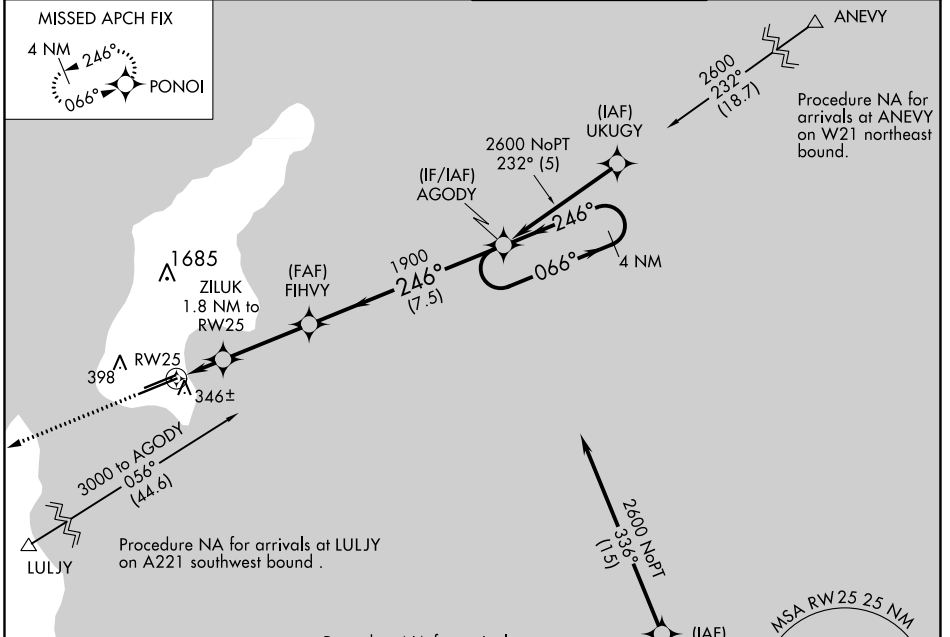
APP CRS <b>246°</b>	Rwy Idg TDZE Apt Elev	<b>8700</b> <b>210</b> <b>215</b>
------------------------	-----------------------------	---

# RNAV (GPS) RWY 25

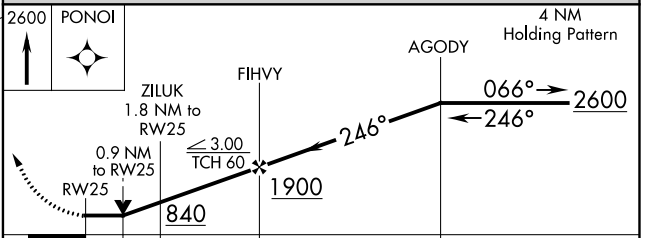
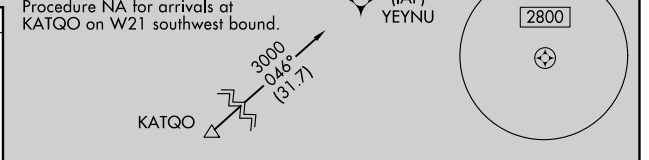
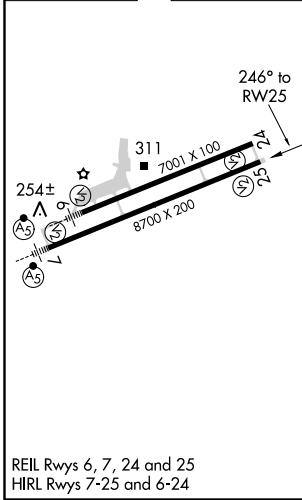
FRANCISCO C ADA/SAIPAN INTL (GSN)(PGSN)

 Circling NA north of Rwy 6-24. Rwy 25 helicopter visibility reduction below ¾ NA. DME/DME RNP-0.3 NA.	MISSED APPROACH: Climb to 2600 direct PONOI and hold.
---	---

ATIS <b>127.2</b>	GUAM APP CON <b>118.4 290.5</b>	SAIPAN TOWER <b>125.7 256.9</b>	GND CON <b>121.8</b>
----------------------	------------------------------------	------------------------------------	-------------------------



ELEV 215	TDZE 210
----------	----------



CATEGORY	A	B	C	D
LNAV MDA	600-1	390 (400-1)	600-1/8	390 (400-1/8)
<b>C</b> CIRCLING	720-1	505 (600-1)	720-1/2	780-2
			505 (600-1/2)	565 (600-2)

PAC, 24 MAY 2018 to 19 JUL 2018

PAC, 24 MAY 2018 to 19 JUL 2018