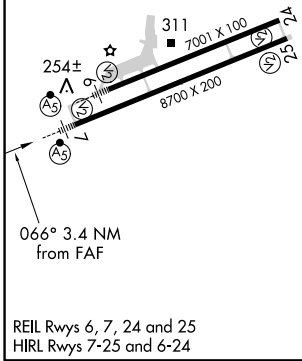
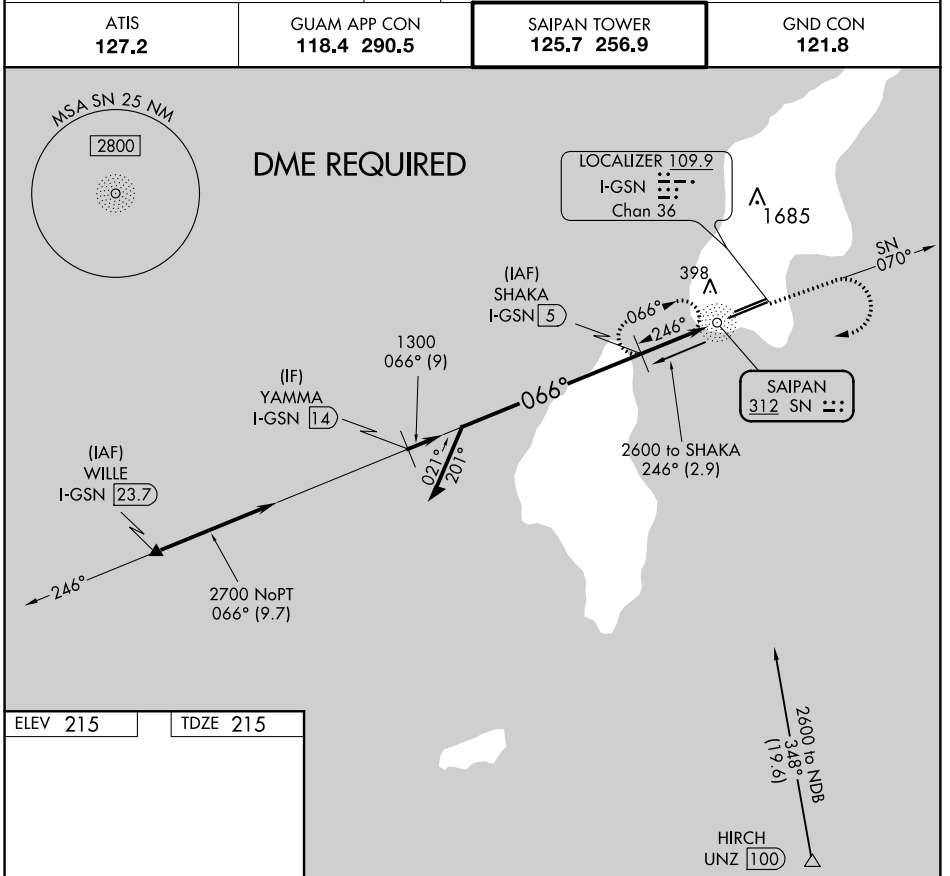


NDB SN 312	APP CRS 066°	Rwy ldg TDZE Apt Elev	8700 215 215
----------------------	------------------------	-----------------------------	---

NDB Z RWY 7

FRANCISCO C ADA/SAIPAN INTL (GSN)(PGSN)

<p>Circling NA north of Rwy 6-24. DME Required.</p>	<p>MALS R</p>	<p>MISSED APPROACH: Climb to 1600 on SN NDB bearing 070° then climbing right turn to 3000 direct SN NDB then on SN NDB bearing 246° to SHAKA/I-GSN 5 DME and hold.</p>	
		<p>ATIS 127.2</p>	<p>GUAM APP CON 118.4 290.5</p>



<p>Remain within 10 NM</p> <p>2000</p> <p>1300</p> <p>2.85° TCH 57</p> <p>2 NM</p> <p>0.9 0.5</p>	<p>SHAKA I-GSN 5</p> <p>1600</p> <p>SN 070°</p>	<p>3000</p> <p>SN NDB</p> <p>I-GSN 3</p>	<p>SN</p> <p>SN NDB I-GSN 2.1</p>	<p>SHAKA I-GSN 5</p> <p>SN 246°</p>	
	<p>CATEGORY</p>	<p>A</p>	<p>B</p>	<p>C</p>	<p>D</p>
<p>S-7</p>	<p>760-3/4</p>	<p>545 (600-3/4)</p>	<p>760-1 1/8</p>	<p>545 (600-1 1/8)</p>	
<p> CIRCLING</p>	<p>760-1</p>	<p>545 (600-1)</p>	<p>760-1 5/8</p>	<p>780-2</p>	<p>565 (600-2)</p>

PAC, 24 MAY 2018 to 19 JUL 2018

PAC, 24 MAY 2018 to 19 JUL 2018