

NDB SN <b>312</b>	APP CRS <b>246°</b>	Rwy ldg TDZE Apt Elev	<b>8700</b> <b>210</b> <b>215</b>
----------------------	------------------------	-----------------------------	---

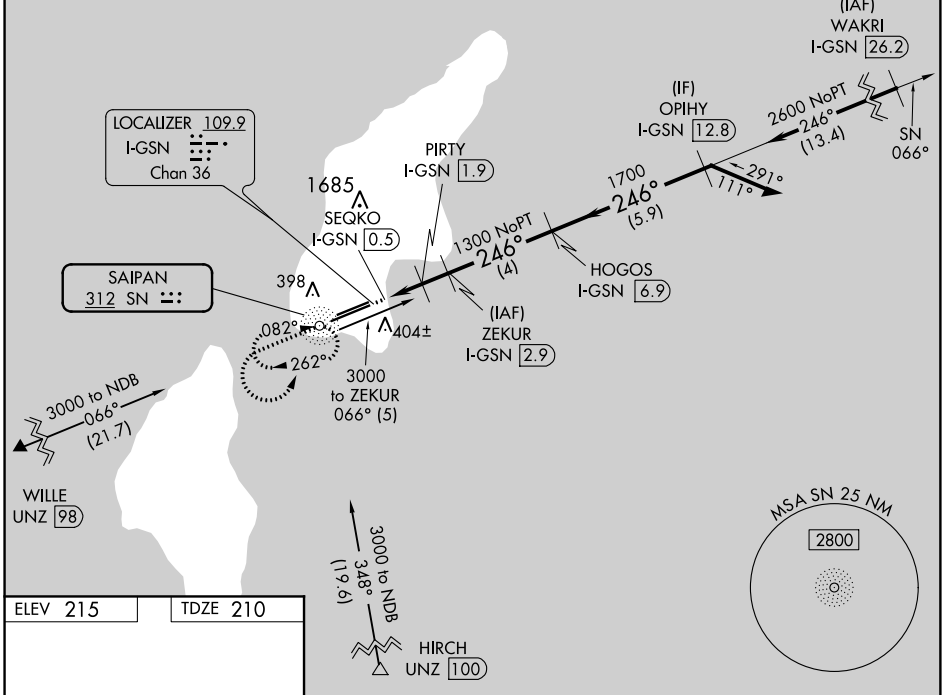
# NDB RWY 25

FRANCISCO C ADA/SAIPAN INTL (GSN)(PGSN)

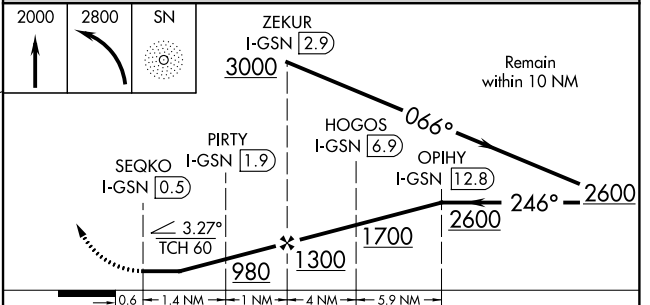
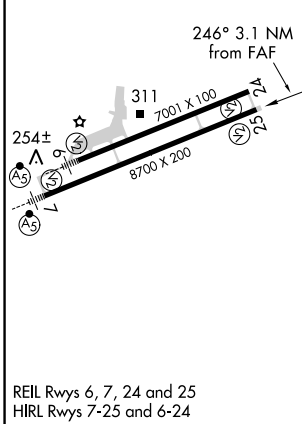
<p><b>▼</b> Circling NA north of Rwy 6-24. Rwy 25 helicopter visibility reduction below 3/4 SM NA. DME required.</p>	<p>MISSED APPROACH: Climb to 2000 then climbing left turn to 2800 direct SN NDB and hold.</p>
--	---

<p>ATIS <b>127.2</b></p>	<p>GUAM APP CON <b>118.4 290.5</b></p>	<p>SAIPAN TOWER <b>125.7 256.9</b></p>	<p>GND CON <b>121.8</b></p>
------------------------------	--	--	---------------------------------

## DME REQUIRED



ELEV 215	TDZE 210
----------	----------



CATEGORY	A	B	C	D
S-25	720-1	510 (600-1)	720-1 3/8	510 (600-1 3/8)
<b>☐</b> CIRCLING	720-1	505 (600-1)	720-1 1/2	780-2 565 (600-2)

PAC, 24 MAY 2018 to 19 JUL 2018

PAC, 24 MAY 2018 to 19 JUL 2018