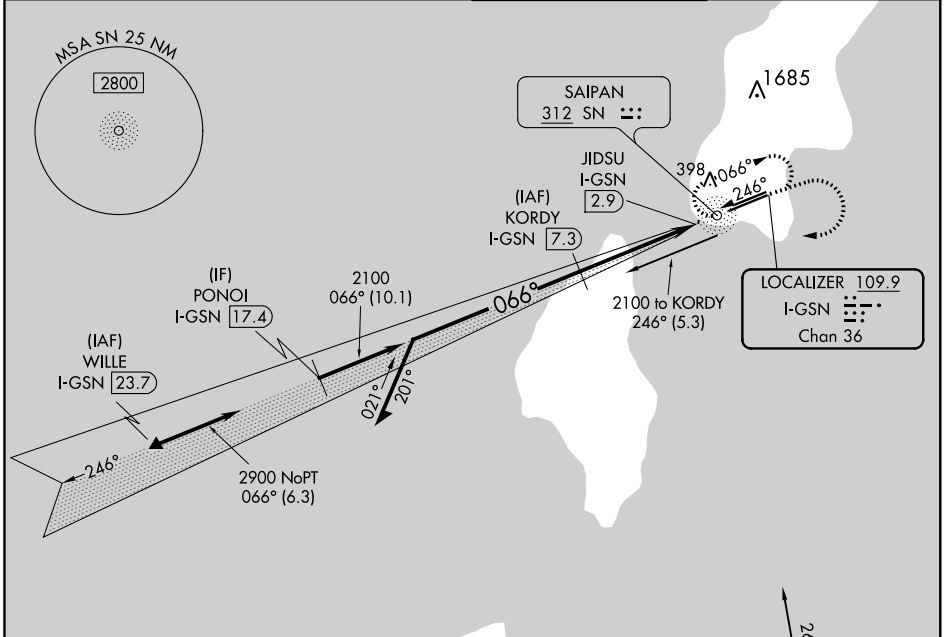


LOC/DME I-GSN 109.9 Chan 36	APP CRS 066°	Rwy Idg 8700 TDZE 215 Apt Elev 215
---	------------------------	---

ILS or LOC RWY 7
FRANCISCO C ADA/SAIPAN INTL (GSN)(PGSN)

NA Circling NA north of Rwy 6-24. ADF and DME required.	MALS 	MISSED APPROACH: Climb to 1600 then climbing right turn to 2800 direct SN NDB and hold.

ATIS 127.2	GUAM APP CON 118.4 290.5	SAIPAN TOWER 125.7 256.9	GND CON 121.8
----------------------	------------------------------------	------------------------------------	-------------------------

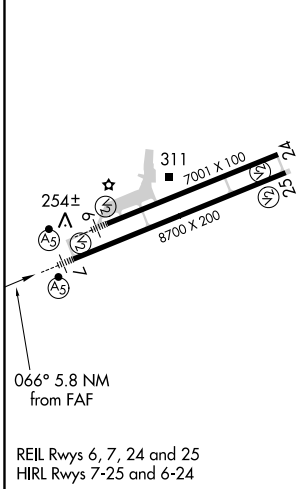


PAC, 24 MAY 2018 to 19 JUL 2018

PAC, 24 MAY 2018 to 19 JUL 2018

ELEV 215	TDZE 215
----------	----------

DME REQUIRED



Remain within 10 NM KORDY I-GSN 7.3 2100 2100 GS 3.00° TCH 55 2100 4.5 NM 0.6 0.7	1600 ↑ JIDSU I-GSN 2.9 * I-GSN 2.3	2800 ↗ I-GSN 1.6 * I-GSN 1.6 * 660	SN * LOC only.
	HIRCH UNZ 100 2600 to NDB 3.8° (19.6)		
CATEGORY S-ILS 7 S-LOC 7 CIRCLING	A 720-1 505 (600-1)	B 415-1/2 200 (200-1/2) 480-1/2 265 (300-1/2) 720-1 1/2 505 (600-1 1/2)	C 780-2 565 (600-2)