

APP CRS	Rwy Idg	N/A
293°	TDZE	N/A
	Apt Elev	359

RNAV (GPS)-B

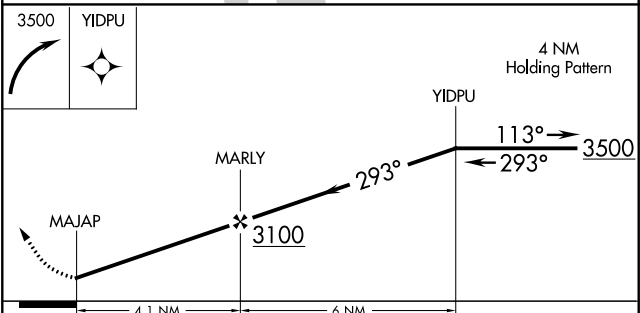
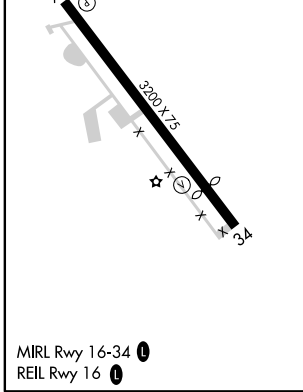
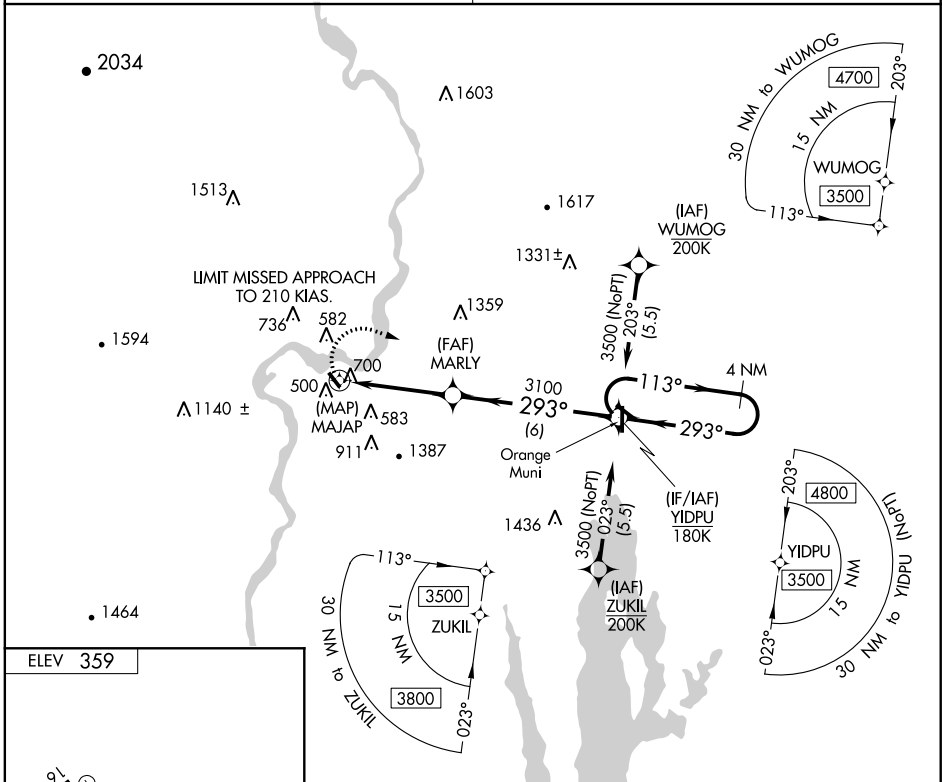
TURNERS FALLS (ØB5)

⚠ Obtain local altimeter setting on CTAF; when not received, use Orange altimeter setting and increase MDA 60 feet. Procedure NA at night.
⚠ NA DME/DME RNP-0.3 NA. Helicopter visibility reduction below 1 SM NA.

MISSED APPROACH: Climbing right turn to 3500 direct YIDPU and hold.

BOSTON CENTER
123.75 338.2

UNICOM
123.0 (CTAF)



CATEGORY	A	B	C	D
CIRCLING	1480-1¼ 1121 (1200-1¼)	1480-1½ 1121 (1200-1½)	1480-3 1121 (1200-3)	NA

NE-1, 24 MAY 2018 to 21 JUN 2018

NE-1, 24 MAY 2018 to 21 JUN 2018