

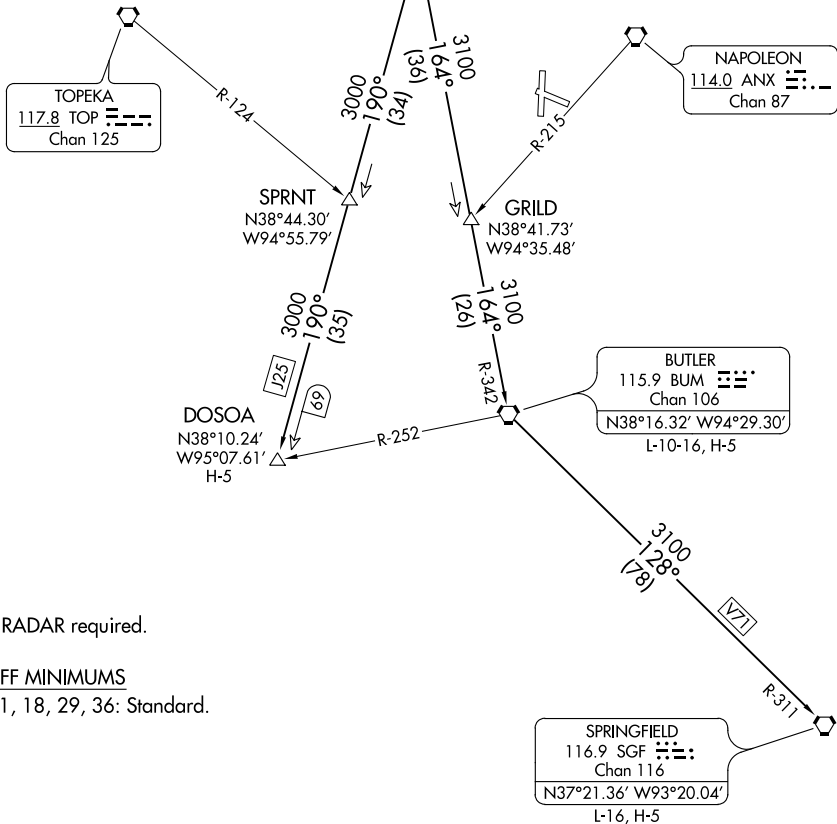
CLNC DEL

118.45

KANSAS CITY DEP CON

123.95 318.1 (BUTLER/SPRINGFIELD TRANSITION)

124.7 284.7 (DOSOA TRANSITION)



NOTE: RADAR required.

### TAKEOFF MINIMUMS

Rwys 11, 18, 29, 36: Standard.

NOTE: Chart not to scale.

### DEPARTURE ROUTE DESCRIPTION

**TAKEOFF ALL RUNWAYS:** Climb on assigned heading for RADAR vectors to appropriate route. Expect filed altitude 10 minutes after departure.

**BUTLER TRANSITION (RACER7.BUM):** From over MCI VORTAC on MCI R-164 and BUM R-342 to BUM VORTAC.

**DOSOA TRANSITION (RACER7.DOSOA):** From over MCI VORTAC on MCI R-190 to DOSOA.

**SPRINGFIELD TRANSITION (RACER7.SGF):** From over MCI VORTAC on MCI R-164 and BUM R-342 to BUM VORTAC, then on BUM R-128 and SGF R-311 to SGF VORTAC.