

LOC/DME F-LVK <b>110.5</b> Chan <b>42</b>	APP CRS <b>255°</b>	Rwy ldg TDZE Apt Elev	<b>5253</b> <b>400</b> <b>400</b>
---	------------------------	-----------------------------	---

# ILS RWY 25R

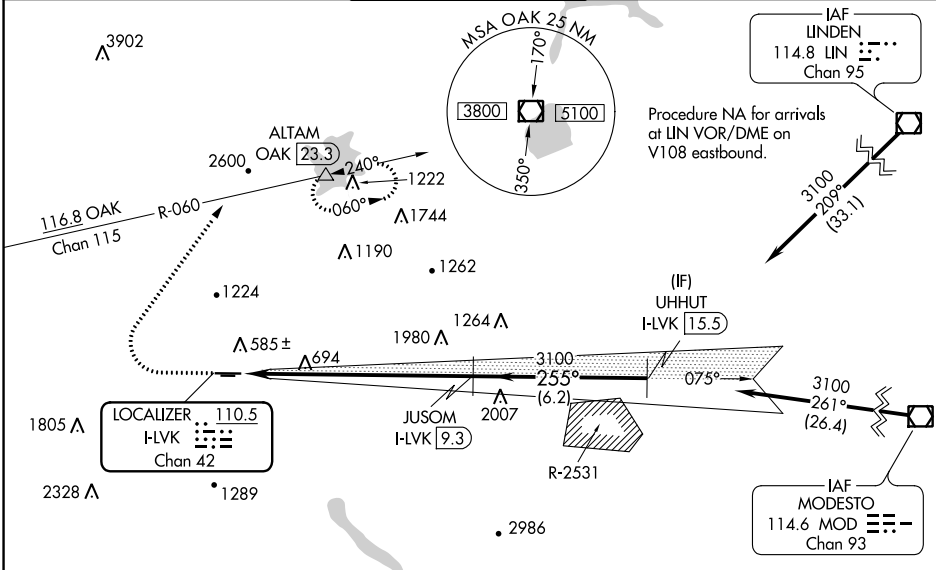
LIVERMORE MUNI (LVK)

**Autopilot coupled approach NA below 1700. DME required.**

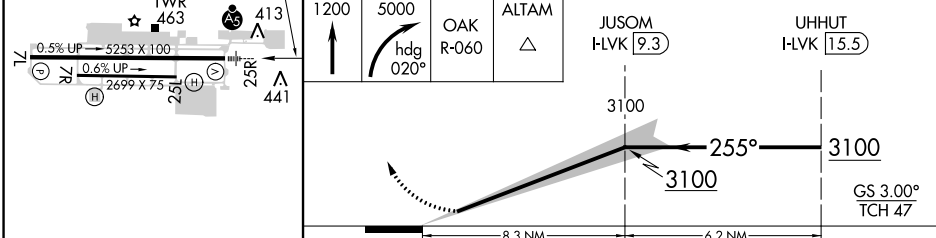
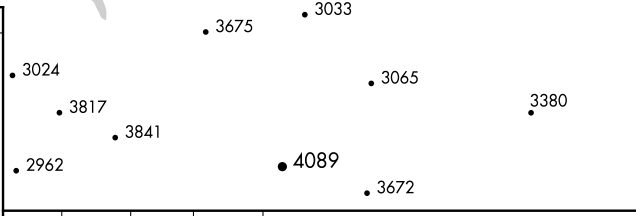
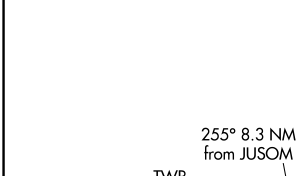


**MISSED APPROACH:** Climb to 1200 then climbing right turn to 5000 on heading 020° and OAK VOR/DME R-060 to ALTAM/OAK VOR/DME 23.3 DME and hold, continue climb-in-hold to 5000.  
\*Missed approach requires a minimum climb of 358 feet per NM to 3600, if unable to meet climb gradient, see LOC RWY 25R.

ATIS <b>119.65</b>	NORCAL APP CON <b>123.85 278.3</b>	LIVERMORE TOWER ★ <b>118.1 (CTAF) 239.25</b>	GND CON <b>121.6</b>	UNICOM <b>122.95</b>
-----------------------	---------------------------------------	---	-------------------------	-------------------------



ELEV 400	TDZE 400
----------	----------



CATEGORY	A	B	C	D
S-ILS 25R*	600-1/2		200 (200-1/2)	

SW-2, 24 MAY 2018 to 21 JUN 2018

SW-2, 24 MAY 2018 to 21 JUN 2018