

VORTAC PXR 115.6 Chan 103	APP CRS 330°	Rwy Idg TDZE Apt Elev N/A N/A 1177
-----------------------------------------------	------------------------	------------------------------------------------------------------------

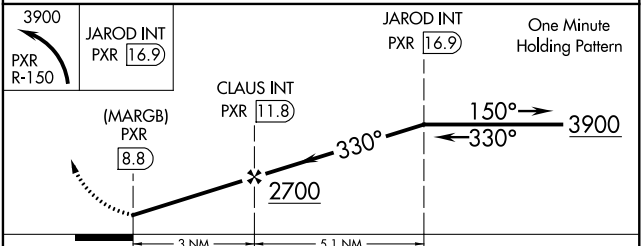
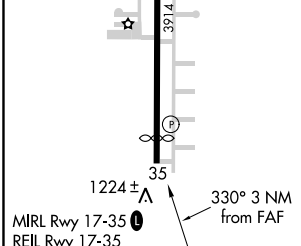
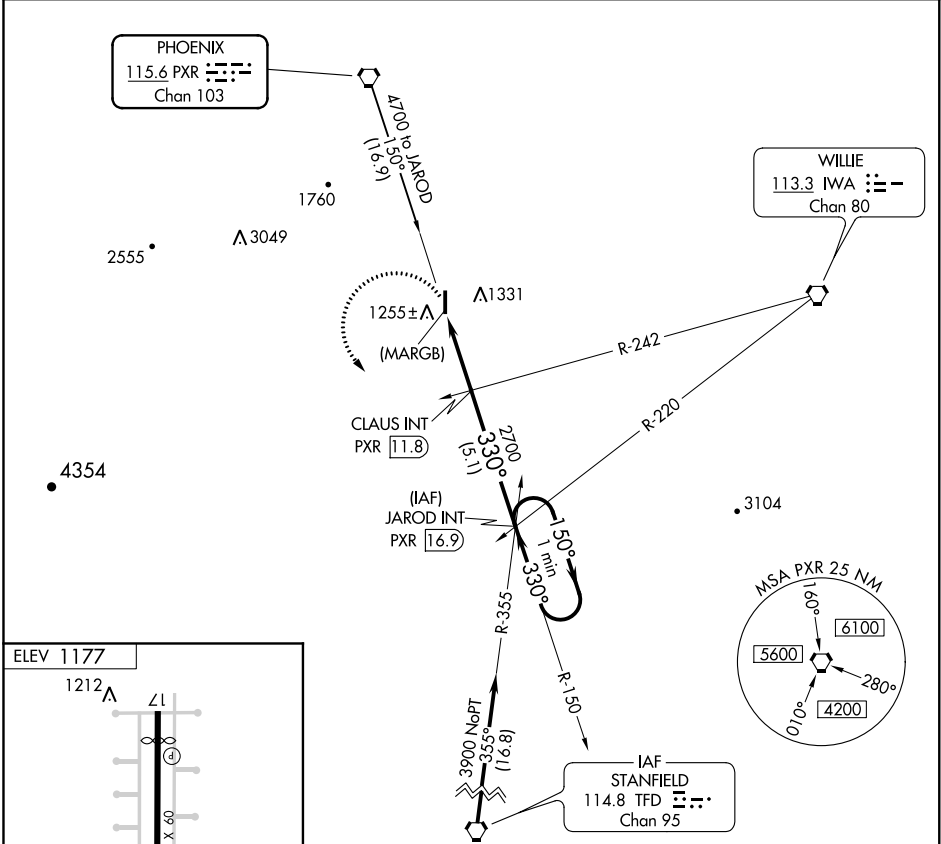
VOR or GPS-A
STELLAR AIRPARK (P19)

NA Use Phoenix Sky Harbor Intl altimeter setting. Procedure not authorized at night.

MISSED APPROACH: Climbing left turn to 3900 via PXR R-150 to JAROD Int/PXR 16.9 DME and hold.

PHOENIX APP CON **123.7 363.0**

UNICOM **122.975(CTAF)**



FAF to MAP 3 NM					
Knots	60	90	120	150	180
Min:Sec	3:00	2:00	1:30	1:12	1:00
CATEGORY	A	B	C	D	
CIRCLING	1640-1 463 (500-1)	1640-1 463 (500-1)	1640-1½ 463 (500-1½)	NA	

SW-4, 24 MAY 2018 to 21 JUN 2018

SW-4, 24 MAY 2018 to 21 JUN 2018