

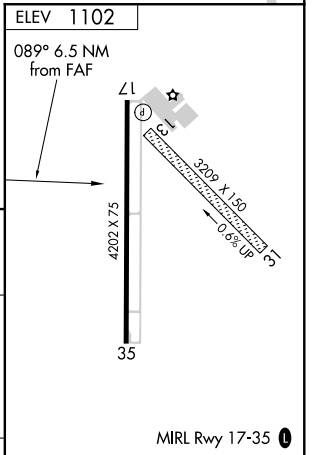
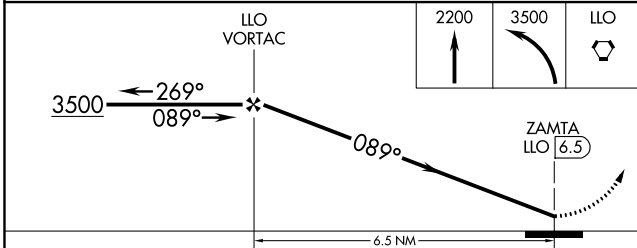
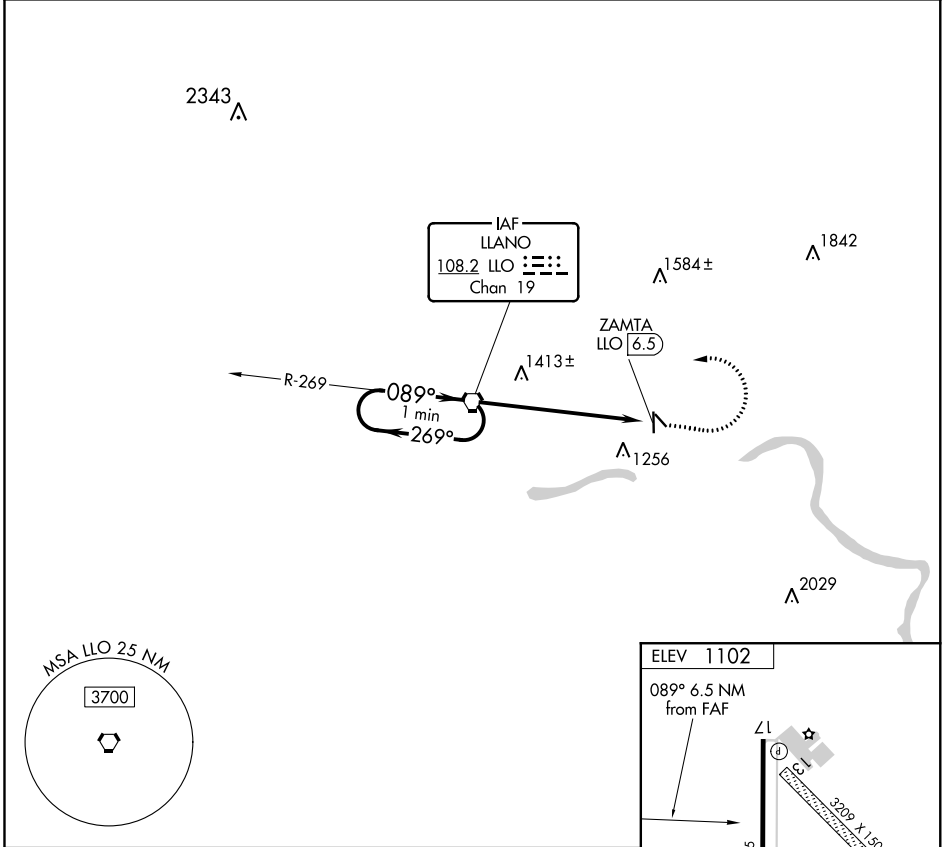
VORTAC LLO 108.2 Chan 19	APP CRS 089°	Rwy Idg TDZE Apt Elev	N/A N/A 1102
--	------------------------	-----------------------------	---

VOR-A
LLANO MUNI (A.QO)

⚠ When local altimeter setting not received, use Burnet altimeter setting and increase all MDA 80 feet. Night Landing: Rwy 35 NA. Helicopter visibility reduction below 1 SM NA.

MISSED APPROACH: Climb to 2200 then climbing left turn to 3500 direct LLO VORTAC.

AWOS-3 119.425	HOUSTON CENTER 132.35 317.5	UNICOM 122.8 (CTAF) ①
--------------------------	---------------------------------------	--



CATEGORY	A	B	C	D	FAF to MAP 6.5 NM					
ⓐ CIRCLING	1720-1	618 (700-1)	NA		Knots	60	90	120	150	180
					Min:Sec	6:30	4:20	3:15	2:36	2:10

SC-3, 24 MAY 2018 to 21 JUN 2018

SC-3, 24 MAY 2018 to 21 JUN 2018