

WAAS CH <b>42505</b> <b>W31A</b>	APP CRS <b>314°</b>	Rwy Idg <b>6500</b> TDZE <b>487</b> Apt Elev <b>501</b>
--	------------------------	---

# RNAV (GPS) RWY 31

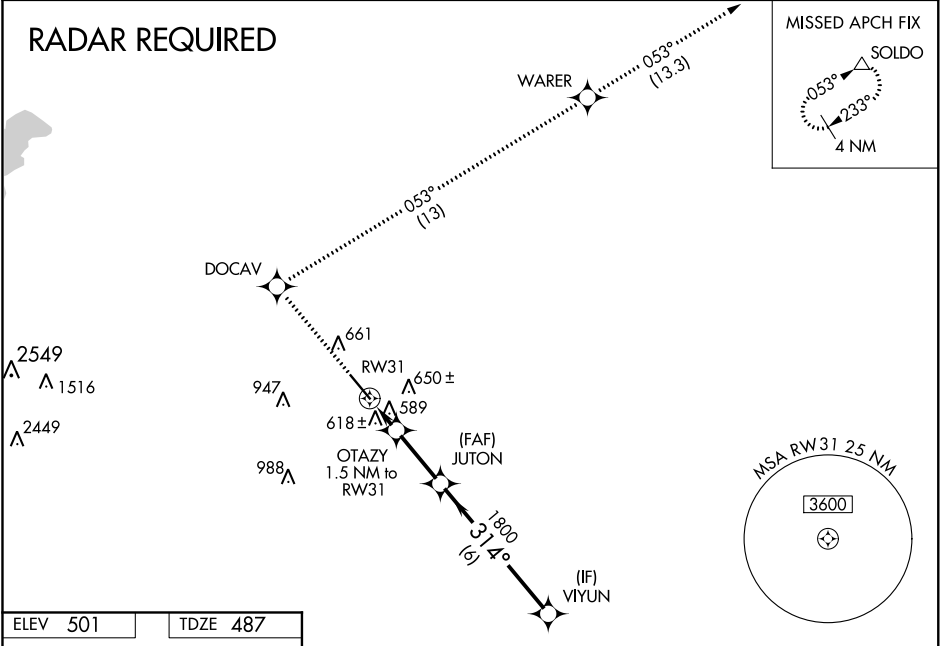
LANCASTER RGNL (LNC)

**⚠** For uncompensated Baro-VNAV systems, LNAV/VNAV NA below -16°C (4°F) or above 47°C (116°F). DME/DME RNP-0.3 NA. Baro-VNAV NA when using Dallas Executive altimeter setting. When local altimeter setting not received, use Dallas Executive altimeter setting and increase all DA 45 feet and all MDA 60 feet; increase LNAV/VNAV all Cats and LNAV Cat C and D visibility ¼ mile.

**MISSED APPROACH:** Climb to 2000 direct DOCAV and right turn on track 053° to WARER then climb to 3000 on track 053° to SOLDO and hold.

AWOS-3 <b>118,975</b>	REGIONAL APP CON <b>125.2 343.65</b>	GCO <b>121,725</b>	UNICOM <b>122.7 (CTAF)</b> <b>📻</b>
--------------------------	---	-----------------------	--

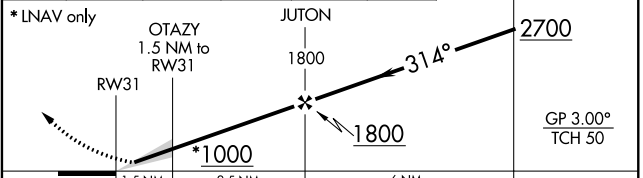
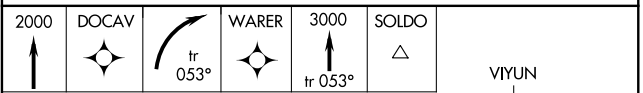
## RADAR REQUIRED



SC-2, 24 MAY 2018 to 21 JUN 2018

SC-2, 24 MAY 2018 to 21 JUN 2018

ELEV <b>501</b>	TDZE <b>487</b>
-----------------	-----------------



CATEGORY	A	B	C	D
LPV DA		687-¾	200 (200-¾)	
LNAV/VNAV DA		925-1½	438 (500-1½)	
LNAV MDA		880-1	393 (400-1)	880-1¼ 393 (400-1¼)
CIRCLING	980-1	479 (500-1)	980-1½ 479 (500-1½)	1060-2 559 (600-2)

