

# KUSSO FIVE DEPARTURE (RNAV)

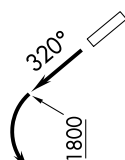
SC-2, 24 MAY 2018 to 21 JUN 2018

REGIONAL DEP CON  
125.2 343.65  
CTAF 122.7

## TOP ALTITUDE: ASSIGNED BY ATC

### TAKEOFF MINIMUMS

Rwy 13: Standard.  
Rwy 31: 300-1/4 or standard with a minimum climb of 205' per NM to 800, or alternatively, with standard takeoff minimums and a normal 200' per NM climb gradient, takeoff must occur no later than 1 200' prior to DER.

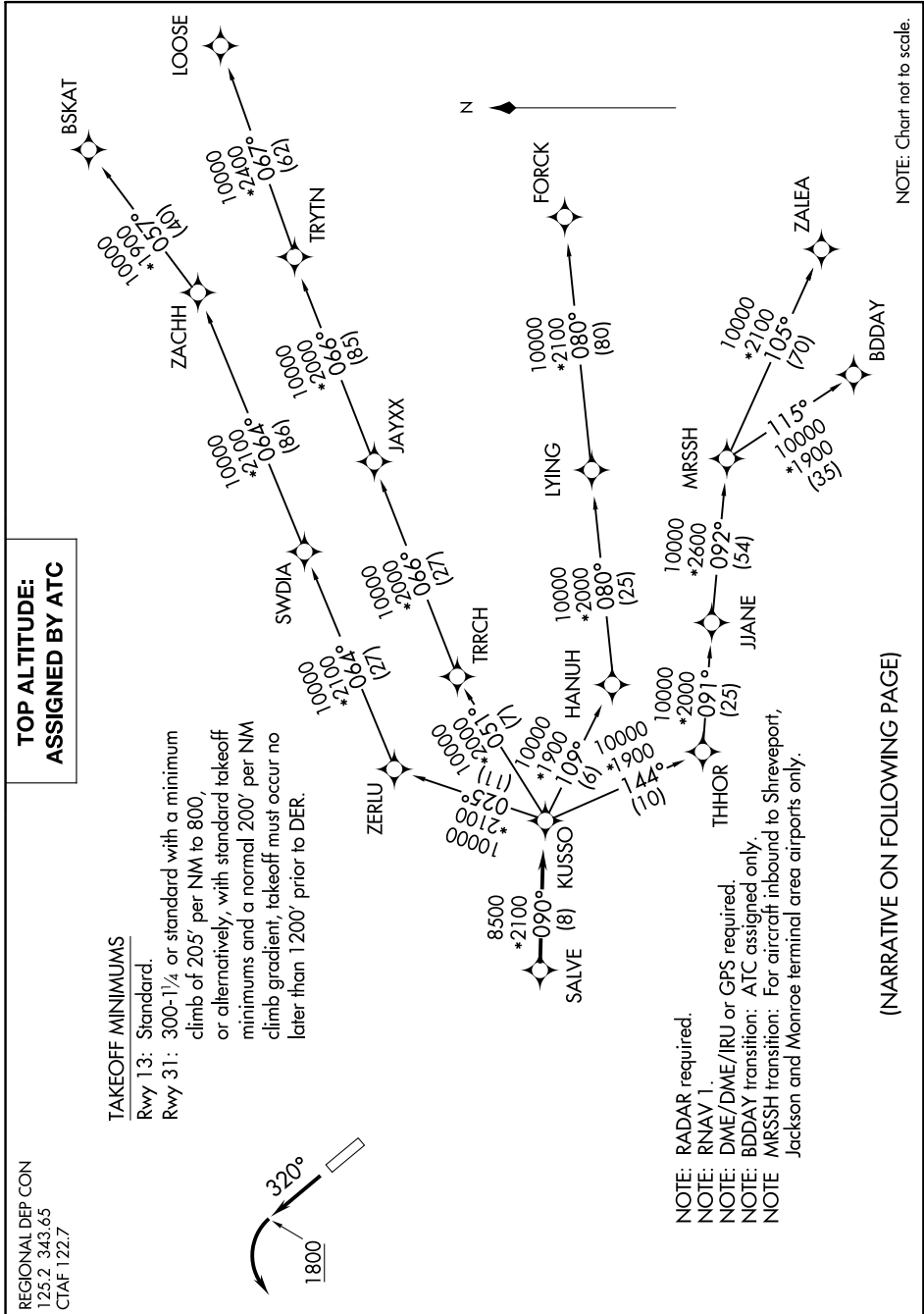


NOTE: Chart not to scale.

# KUSSO FIVE DEPARTURE (RNAV)

SC-2, 24 MAY 2018 to 21 JUN 2018

(NARRATIVE ON FOLLOWING PAGE)



NOTE: RADAR required.  
NOTE: RNAV 1.  
NOTE: DME/DME/IRU or GPS required.  
NOTE: BDDAY transition: ATC assigned only.  
NOTE: MRSSH transition: For aircraft inbound to Shreveport, Jackson and Monroe terminal area airports only.