

APP CRS	Rwy Idg	4004
329°	TDZE	811
	Apt Elev	811

RNAV (GPS) RWY 33

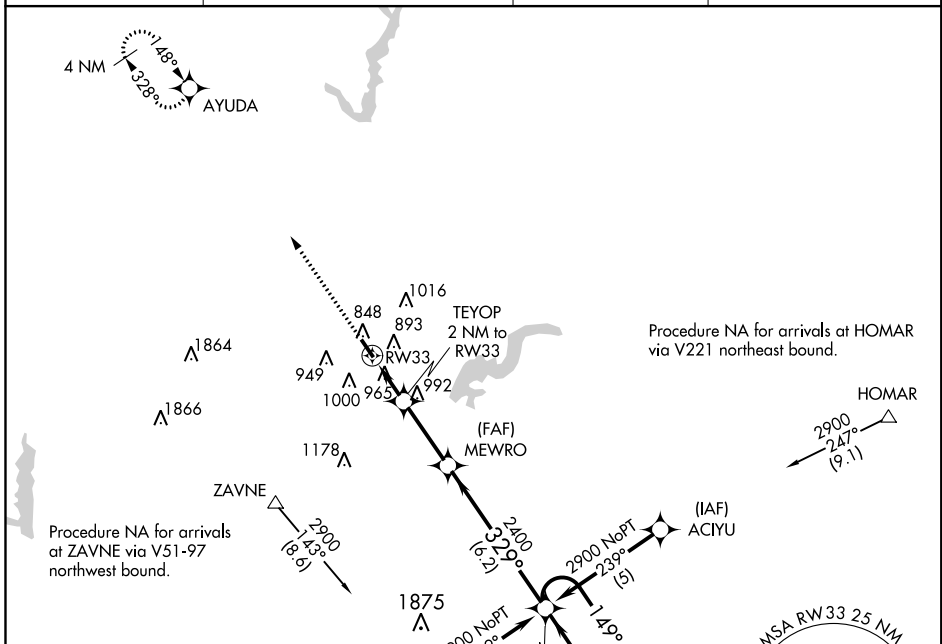
INDIANAPOLIS METROPOLITAN (UMP)

▽ DME/DME RNP-0.3 NA. When local altimeter setting not received, use Indianapolis Intl altimeter setting and increase all MDA 60 feet and LNAV Cat C visibility ¼ mile. VDP NA when using Indianapolis Intl altimeter setting. Rwy 33 helicopter visibility reduction below ¾ SM NA.

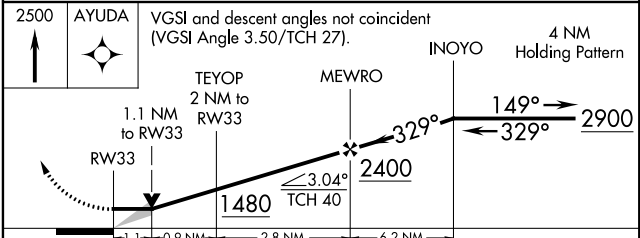
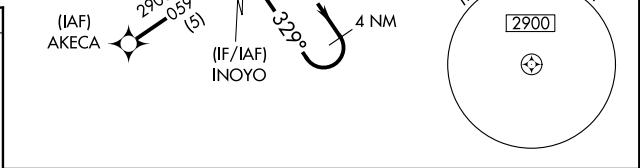
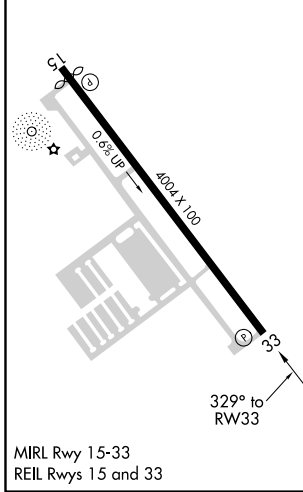
△ NA

MISSED APPROACH: Climb to 2500 direct AYUDA and hold.

AWOS-3 119.375	INDIANAPOLIS APP CON 127.15 317.8	CLNC DEL 121.625	UNICOM 123.0 (CTAF)
--------------------------	---------------------------------------------	----------------------------	-------------------------------



ELEV 811	TDZE 811
----------	----------



CATEGORY	A	B	C	D
LNAV MDA	1260-1	449 (500-1)	1260-1¼ 449 (500-1¼)	NA
CIRCLING	1320-1 509 (600-1)	1340-1 529 (600-1)	1340-1½ 529 (600-1½)	NA

EC-2, 24 MAY 2018 to 21 JUN 2018

EC-2, 24 MAY 2018 to 21 JUN 2018