

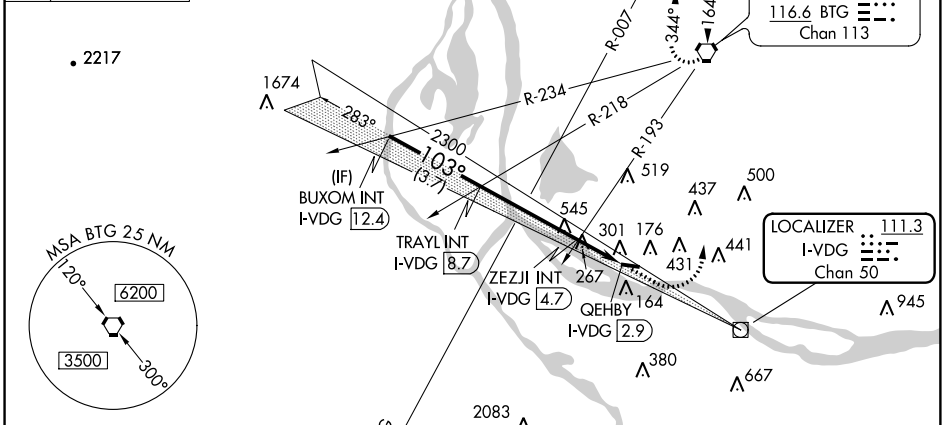
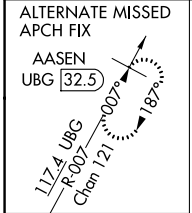
LOC/DME I-VDG <b>111.3</b> Chan <b>50</b>	APP CRS <b>103°</b>	Rwy Idg TDZE Apt Elev <b>N/A</b> <b>N/A</b> <b>25</b>
---	------------------------	--

**LDA-A**  
PEARSON FIELD (VUO)

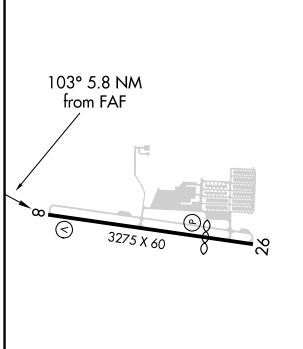
**⚠** When local altimeter setting not received, use Portland Intl altimeter setting. Helicopter visibility reduction below 1 SM (or RVR 5000 as appropriate) not authorized.

**⚠** MISSED APPROACH: Climb to 900 then climbing left turn to 4200 direct BTG VORTAC and hold, continue climb-in-hold to 4200.

ASOS <b>135.125</b>	PORTLAND APP CON <b>124.35 360.8</b>	CLNC DEL <b>119.0 (CTAF) 0</b>	UNICOM <b>123.0</b>
------------------------	---	-----------------------------------	------------------------



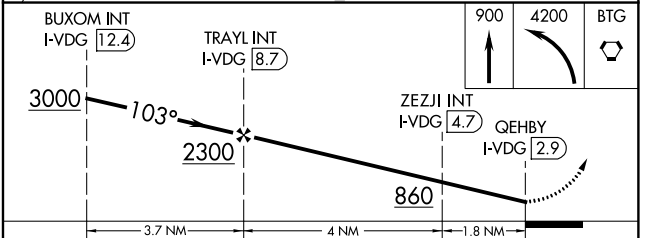
ELEV 25 **D**



REIL Rwy 26  
MIRL Rwy 8-26 **0**

FAF to MAP 5.8 NM

Knots	60	90	120	150	180
Min:Sec	5:48	3:52	2:54	2:19	1:56



CATEGORY	A	B	C	D
CIRCLING	860-1¼	835 (900-1¼)	NA	NA
ZEJJI FIX MINIMUMS (DUAL VOR RECEIVERS OR DME REQUIRED)				
CIRCLING	700-1 675 (700-1)	740-1 715 (800-1)	NA	NA

NW-1, 24 MAY 2018 to 21 JUN 2018

NW-1, 24 MAY 2018 to 21 JUN 2018