

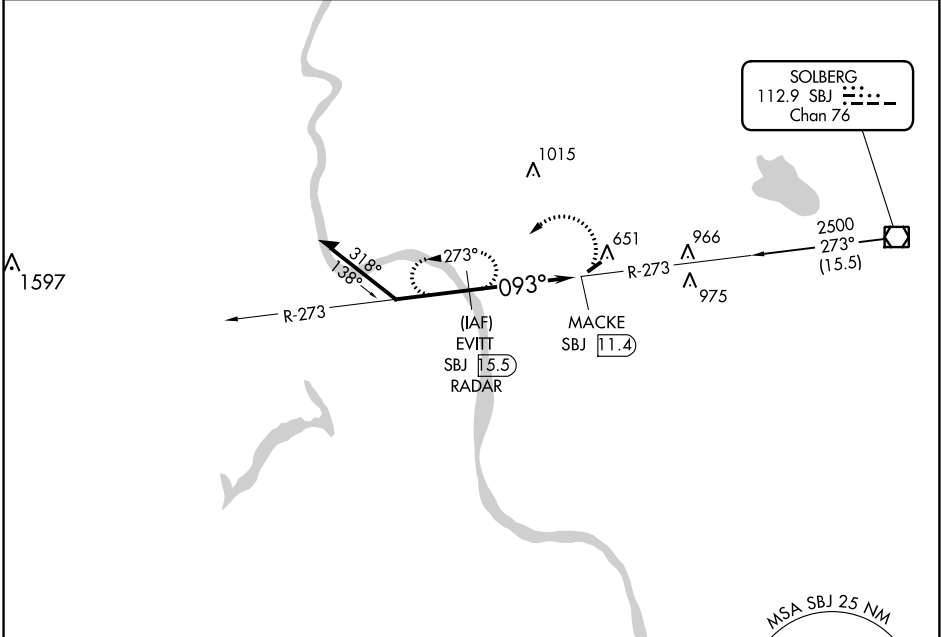
VOR/DME SBJ	APP CRS	Rwy Idg	2900
112.9	093°	TDZE	558
Chan 76		Apt Elev	560

VOR RWY 7
SKY MANOR (N40)

NA DME or radar required. Procedure NA at night. Use Lehigh Valley Intl altimeter setting, when not received, use Trenton altimeter setting and increase all MDA 20 feet. Rwy 7, 25 helicopter visibility reduction below 1 SM NA.

MISSED APPROACH: Climbing left turn to 2500 on SBJ VOR/DME R-273 to EVITT/SBJ 15.5 DME/RADAR and hold.

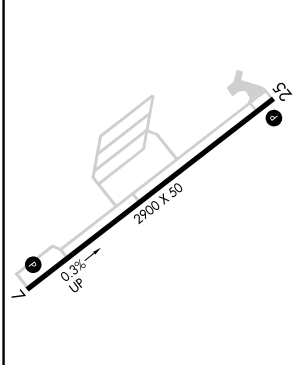
LEHIGH VALLEY INTL ASOS 126.975	ALLENTOWN APP CON 119.65 124.45 351.8	GCO 121.725	UNICOM 122.975 (CTAF) 0
---	---	-----------------------	-----------------------------------



NE-2, 24 MAY 2018 to 21 JUN 2018

NE-2, 24 MAY 2018 to 21 JUN 2018

ELEV 560	TDZE 558
----------	----------

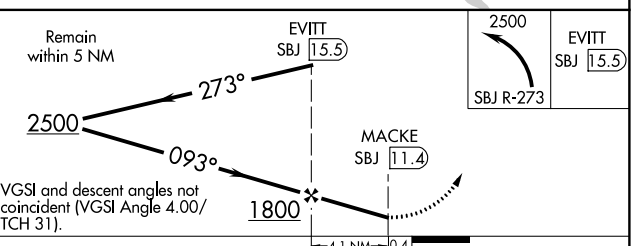


MIRL Rwy 7-25 0
REIL Rwys 7 and 25 0

FAF to MAP 4.1 NM

Knots	60	90	120	150	180
Min:Sec	4:06	2:44	2:03	1:38	1:22

DME OR RADAR REQUIRED



CATEGORY	A	B	C	D
S-7	1220-1 662 (700-1)		NA	
CIRCLING	1220-1 660 (700-1)		NA	