

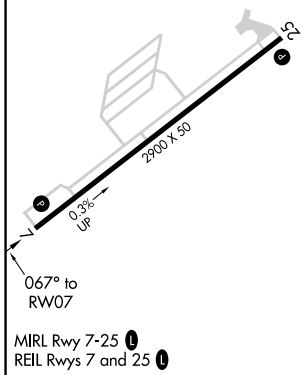
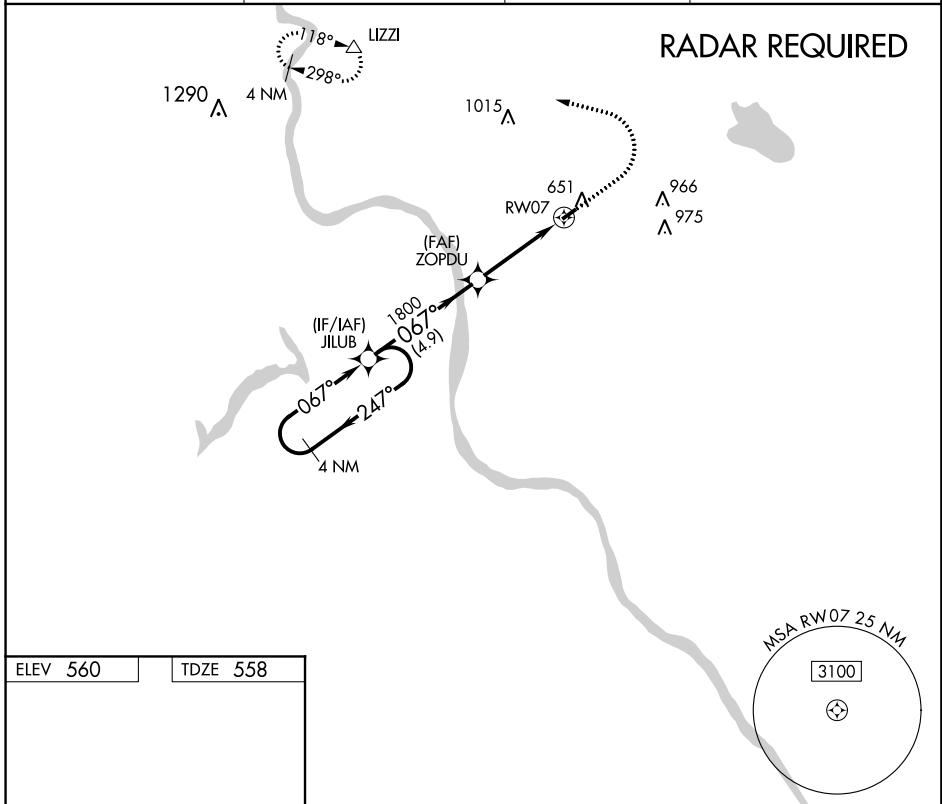
APP CRS	Rwy Idg	2900
067°	TDZE	558
	Apt Elev	560

RNAV (GPS) RWY 7

SKY MANOR (N40)

▽ DME/DME RNP-0.3 NA. Procedure NA at night. Helicopter visibility reduction below 1 SM NA. Use Lehigh Valley altimeter setting; when not received use Trenton altimeter setting and increase all MDA 20 feet.	MISSED APPROACH: Climb to 1100 then climbing left turn to 3000 direct LIZZI and hold.
---	---

LEHIGH VALLEY INTL ASOS 126.975	ALLENTOWN APP CON 119.65 124.45 351.8	GCO 121.725	UNICOM 122.975 (CTAF) 0
---	---	-----------------------	-----------------------------------



4 NM Holding Pattern		VGSI and descent angles not coincident (VGSI Angle 4.00/TCH 31).		1100	3000	LIZZI
2500		1800				
←247°		067°				
		067°				
		3.00°				
		TCH 40				
		4.9 NM				
		3.8 NM				
CATEGORY	A	B	C	D		
LNAV MDA	1080-1 522 (600-1)	NA		NA		
C CIRCLING	1140-1 580 (600-1)	NA		NA		

NE-2, 24 MAY 2018 to 21 JUN 2018

NE-2, 24 MAY 2018 to 21 JUN 2018