

APP CRS	Rwy Idg	<b>3180</b>
<b>269°</b>	TDZE	<b>8</b>
	Apt Elev	<b>8</b>

# RNAV (GPS) RWY 28R

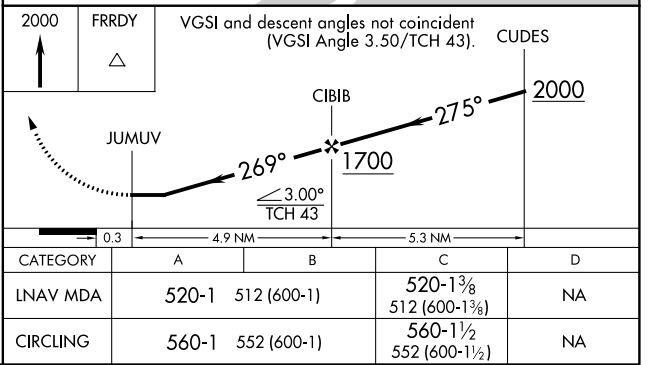
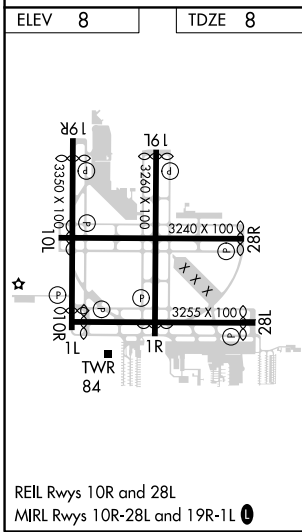
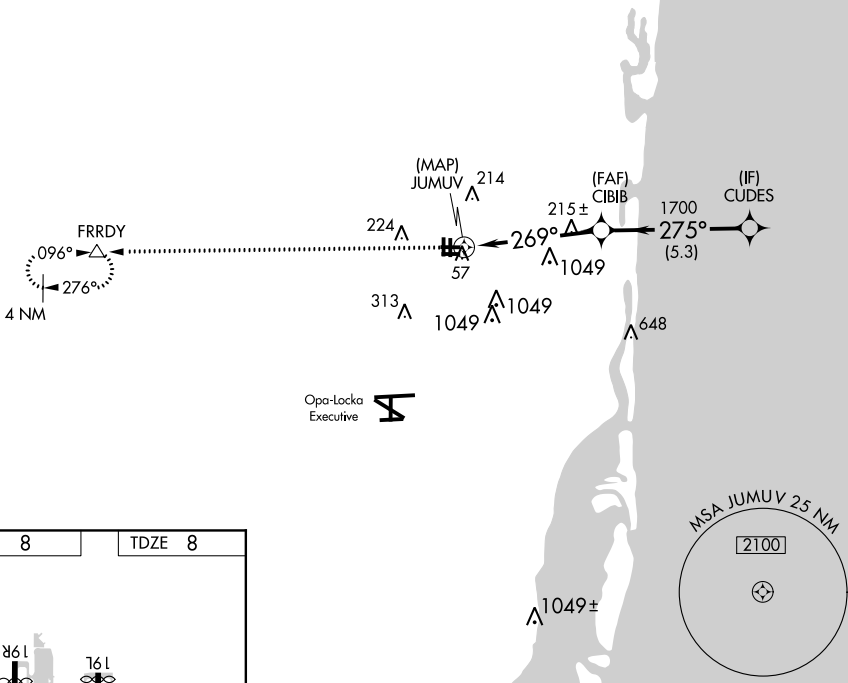
NORTH PERRY (HWO)

**⚠** DME/DME RNP-0.3 NA. Helicopter visibility reduction below ¾ SM NA. When local altimeter setting not received, use Fort Lauderdale/Hollywood Intl altimeter setting and increase all MDA 20 feet, increase LNAV Cat C visibility ¼ mile. When VGSI inop, Circling Rwy 19L and 01R NA at night. Straight-in minimums NA at night.

**⚠** MISSED APPROACH: Climb to 2000 direct FRRDY and hold.

ATIS <b>135.475</b>	MIAMI APP CON <b>128.6 306.975</b>	<b>NORTH PERRY TOWER*</b> <b>132.1</b> (CTAF) <b>0 254.3</b>	GND CON <b>120.45 254.3</b>	UNICOM <b>122.95</b>
------------------------	---------------------------------------	-----------------------------------------------------------------	--------------------------------	-------------------------

## RADAR REQUIRED



SE-3, 24 MAY 2018 to 21 JUN 2018

SE-3, 24 MAY 2018 to 21 JUN 2018