

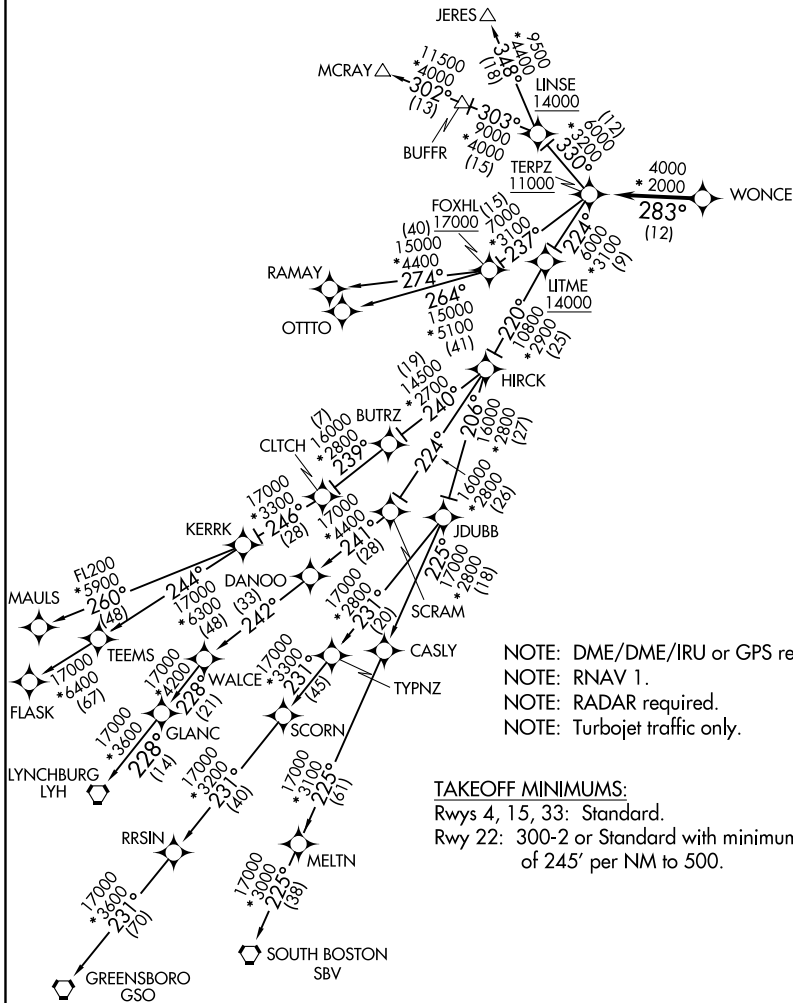
# TERPZ SIX DEPARTURE (RNAV)

ATIS  
 124.475  
 CLNC DEL  
 119.075  
 GND CON  
 119.075  
 EASTON TOWER ★  
 118.525 (CTAF)  
 UNICOM  
 122.95  
 POTOMAC DEP CON  
 124.55

**TOP ALTITUDE:**  
**RAMAY, OTTTO, MAULS, FLASK,**  
**SBV, LYH, GSO TRANSITIONS:**  
**17000**  
**JERES, MCRAY TRANSITIONS:**  
**16000**

NE-3, 24 MAY 2018 to 21 JUN 2018

NE-3, 24 MAY 2018 to 21 JUN 2018



NOTE: DME/DME/IRU or GPS required.  
 NOTE: RNAV 1.  
 NOTE: RADAR required.  
 NOTE: Turbojet traffic only.

**TAKEOFF MINIMUMS:**

Rwys 4, 15, 33: Standard.  
 Rwy 22: 300-2 or Standard with minimum climb  
 of 245' per NM to 500.

NOTE: Chart not to scale.

# TERPZ SIX DEPARTURE (RNAV)