

WAAS CH 40207 W22A	APP CRS 221°	Rwy Idg TDZE 72 Apt Elev 72
--	------------------------	---

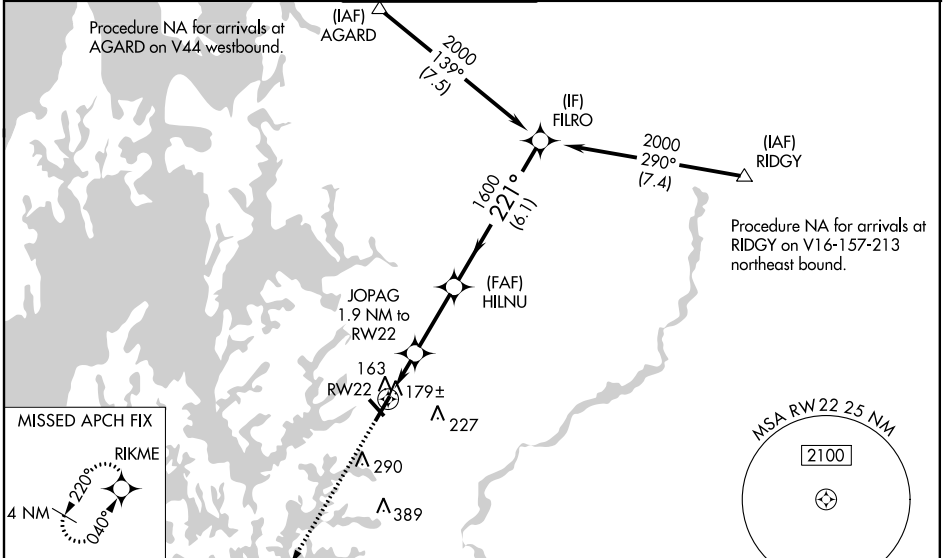
RNAV (GPS) RWY 22

EASTON/NEWNAM FIELD (E/SN)

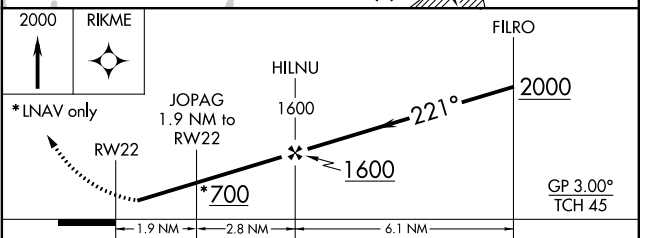
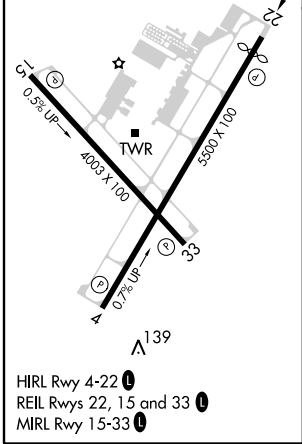
⚠ Night landing: Rwy 15, 33 NA. Baro-VNAV NA when using Baltimore altimeter setting. For uncompensated Baro-VNAV systems, LNAV/VNAV NA below -15°C (5°F) or above 43°C (109°F). DME/DME RNP-0.3 NA. Helicopter visibility reduction below 1 SM NA. When local altimeter setting not received, use Baltimore altimeter setting and increase all DA 93 feet and all MDA 100 feet; increase LPV all Cats visibility 1/8 mile, increase LNAV/VNAV all Cats visibility 1/4 mile, and increase LNAV Cats C and D / Circling Cat C visibility 1/4 mile.

MISSED APPROACH:
Climb to 2000 direct RIKME and hold.

ATIS 124.475	POTOMAC APP CON 133.75 254.35	EASTON TOWER ★ 118.525 (CTAF) 0	GND CON 119.075	CLNC DEL 119.075	UNICOM 122.95
------------------------	---	---	---------------------------	----------------------------	-------------------------



ELEV 72	D	TDZE 72
---------	----------	---------



CATEGORY	A	B	C	D
LPV DA		322-1	250 (300-1)	
LNAV/VNAV DA		362-1	290 (300-1)	
LNAV MDA		440-1	368 (400-1)	
CIRCLING	480-1 408 (500-1)	620-1 548 (600-1)	660-1½ 588 (600-1½)	660-2 588 (600-2)

NE-3, 24 MAY 2018 to 21 JUN 2018

NE-3, 24 MAY 2018 to 21 JUN 2018