

LOC/DME I-FGH 109.35 Chan 30 (Y)	APP CRS 041°	Rwy Idg 4775 TDZE 58 Apt Elev 72
--	------------------------	---

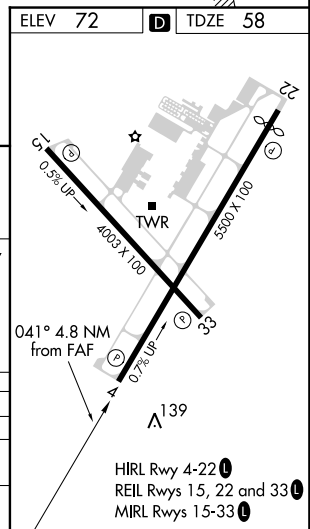
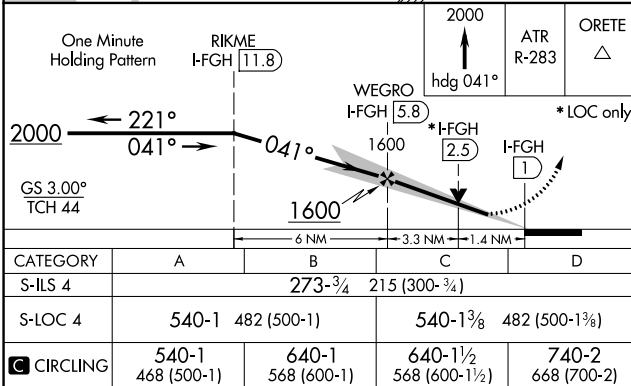
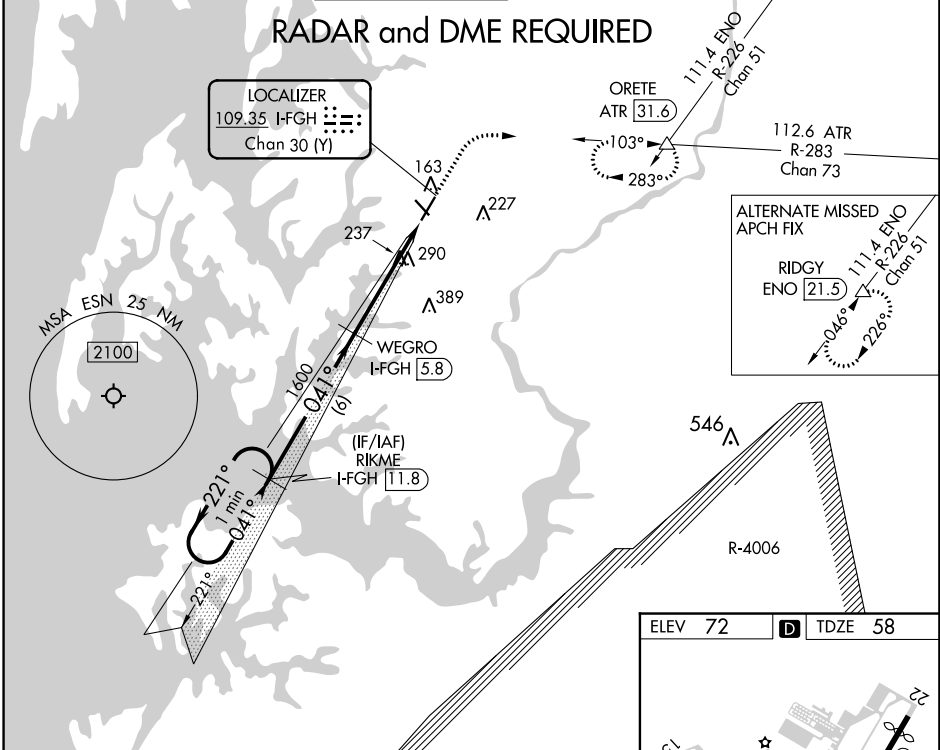
ILS or LOC RWY 4

EASTON/NEWNAM FIELD (ESN)

⚠ DME required. When local altimeter setting not received, use Cambridge altimeter setting and increase all DA to 318 feet and all MDA 60 feet: increase S-ILS 4 all Cats visibility 1/8 SM and increase S-LOC 4 and Circling Cat C/D visibility 1/4 SM. VDP NA when using Cambridge altimeter setting. Circling Rwy 15, 33 NA at night. Autopilot coupled approach NA below 541.

MISSED APPROACH: Climb to 2000 on heading 041° and on ATR VOR/DME R-283 to ORETE INT/ATR 31.6 DME and hold.

ATIS 124.475	POTOMAC APP CON 133.75 254.35	EASTON TOWER★ 118.525 (CTAF) 0	GND CON 119.075	CLNC DEL 119.075 126.9 (Tower closed)	UNICOM 122.95
------------------------	---	--	---------------------------	--	-------------------------



NE-3, 24 MAY 2018 to 21 JUN 2018

NE-3, 24 MAY 2018 to 21 JUN 2018