

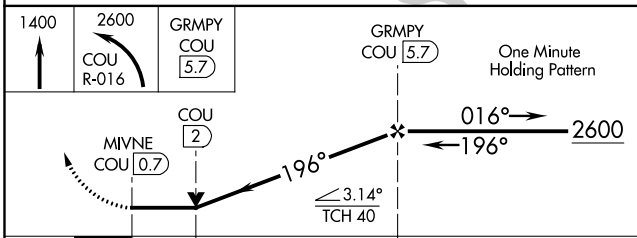
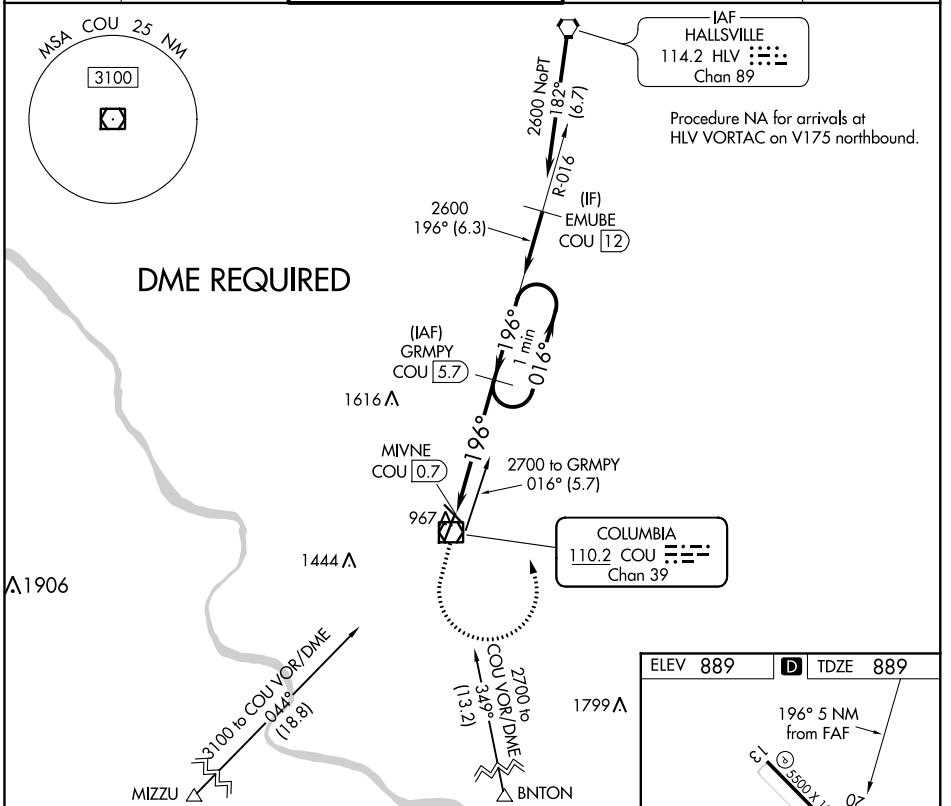
VOR/DME COU 110.2 Chan 39	APP CRS 196°	Rwy Idg TDZE 889 Apt Elev 889
---	------------------------	---

VOR Y RWY 20

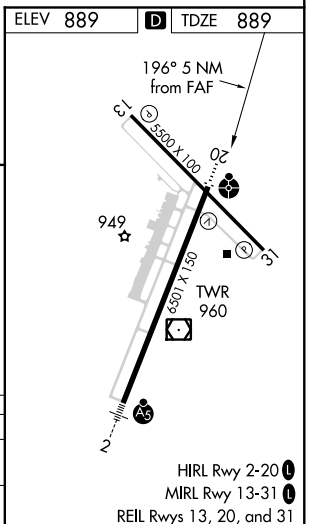
COLUMBIA RGNL (COU)

<p>Circling NA for Cat D west of Rwy 2 and 13. DME required.</p>	<p>ODALS ⋮ ⊕</p>	<p>MISSED APPROACH: Climb to 1400 then climbing left turn to 2600 on COU VOR/DME R-016 to GRMPY/COU 5.7 DME and hold.</p>
	<p>ATIS 128.45</p>	<p>MIZZU APP CON 124.375 353.7</p>

<p>COLUMBIA RADIO 121.5 243.0 255.4</p>	<p>GND CON 121.6</p>
--	---------------------------------



CATEGORY	A	B	C	D
S-20	1360-3/4 471 (500-3/4)		1360-1 1/4 471 (500-1 1/4)	
CIRCLING	1360-1 471 (500-1)		1360-1 1/2 471 (500-1 1/2)	1440-2 551 (600-2)



NC-3, 24 MAY 2018 to 21 JUN 2018

NC-3, 24 MAY 2018 to 21 JUN 2018