

VOR/DME COU 110.2 Chan 39	APP CRS 153°	Rwy Idg 5500 TDZE 889 Apt Elev 889
---	------------------------	---

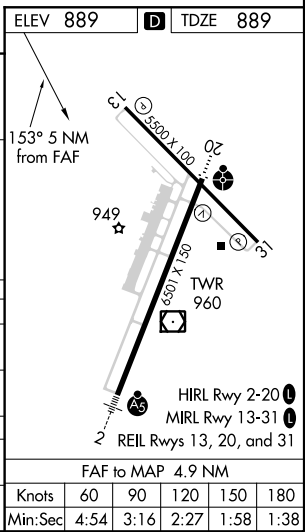
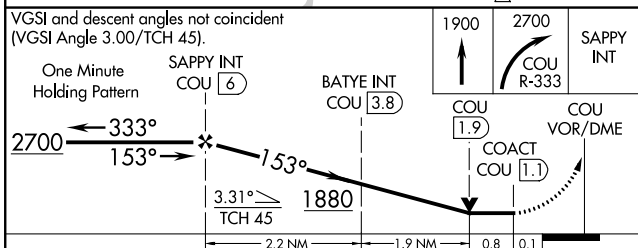
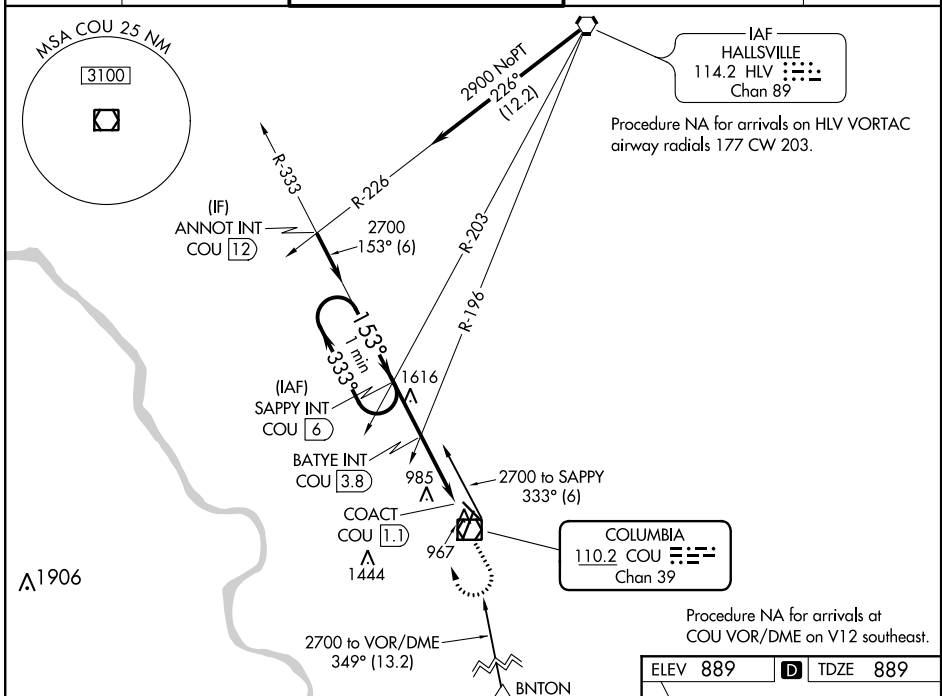
VOR RWY 13

COLUMBIA RGNL (COU)

⚠ Circling NA for Cat D west of Rwy 2 and 13.

MISSED APPROACH: Climb to 1900 then climbing right turn to 2700 on COU VOR/DME R-333 to SAPPY INT/COU 6 DME and hold.

ATIS 128.45	MIZZU APP CON 124.375 353.7	COLUMBIA TOWER* 119.3 (CTAF) 0 363.25	COLUMBIA RADIO 121.5 243.0 255.4	GND CON 121.6
-----------------------	---------------------------------------	---	--	-------------------------



CATEGORY	A	B	C	D
S-13	1880-1¼ 991 (1000-1¼)	1880-1½ 991 (1000-1½)	1880-3	991 (1000-3)
C CIRCLING	1880-1¼ 991 (1000-1¼)	1880-1½ 991 (1000-1½)	1880-3	991 (1000-3)
BATYE FIX MINIMUMS				
S-13	1240-1 351 (400-1)			
C CIRCLING	1300-1 411 (500-1)	1340-1 451 (500-1)	1340-1½ 451 (500-1½)	1440-2 551 (600-2)

NC-3, 24 MAY 2018 to 21 JUN 2018

NC-3, 24 MAY 2018 to 21 JUN 2018