

WAAS CH <b>86242</b> <b>W31A</b>	APP CRS <b>315°</b>	Rwy Idg TDZE Apt Elev	<b>5500</b> <b>888</b> <b>889</b>
--	------------------------	-----------------------------	---

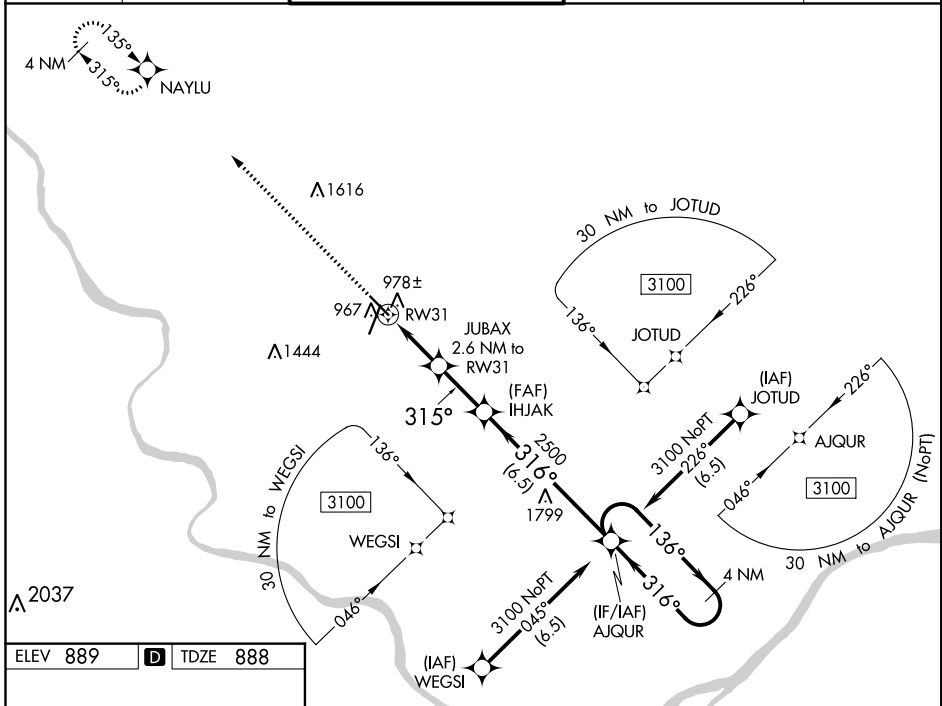
# RNAV (GPS) RWY 31

COLUMBIA RGNL (COU)

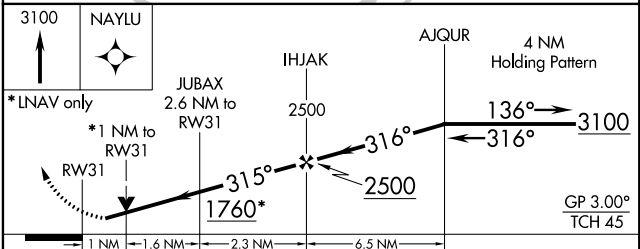
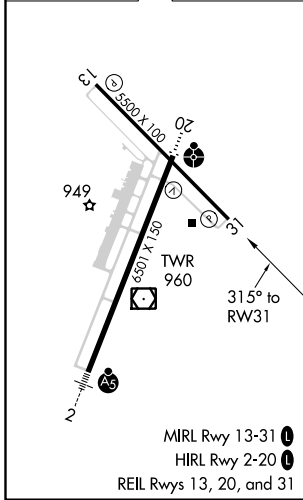
▼ For uncompensated Baro-VNAV systems, LNAV/VNAV NA below -17°C (2°F) or above 54°C (130°F). Circling NA for Cat D west of Rws 2 and 13.  
Rwy 31 helicopter visibility reduction below 3/4 SM NA. DME/DME RNP-0.3 NA.

MISSED APPROACH: Climb to 3100 direct NAYLU and hold.

ATIS <b>128.45</b>	MIZZO APP CON <b>124.375 353.7</b>	COLUMBIA TOWER★ <b>119.3 (CTAF) 363.25</b>	COLUMBIA RADIO <b>121.5 243.0 255.4</b>	GND CON <b>121.6</b>
-----------------------	---------------------------------------	---	--	-------------------------



ELEV 889	<b>D</b>	TDZE 888
----------	----------	----------



CATEGORY	A	B	C	D
LPV DA		1138-1	250 (300-1)	
LNAV/VNAV DA		1138-1	250 (300-1)	
LNAV MDA		1240-1	352 (400-1)	
<b>CIRCLING</b>	1300-1 411 (500-1)	1340-1 451 (500-1)	1340-1½ 451 (500-1½)	1440-2 551 (600-2)

NC-3, 24 MAY 2018 to 21 JUN 2018

NC-3, 24 MAY 2018 to 21 JUN 2018