

WAAS CH 93599 W20A	APP CRS 201°	Rwy Idg TDZE Apt Elev	6501 889 889
--	------------------------	-----------------------------	---

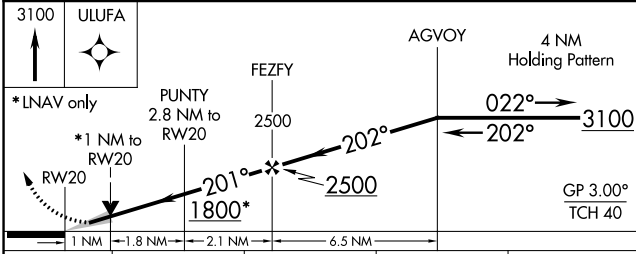
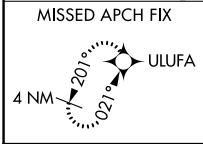
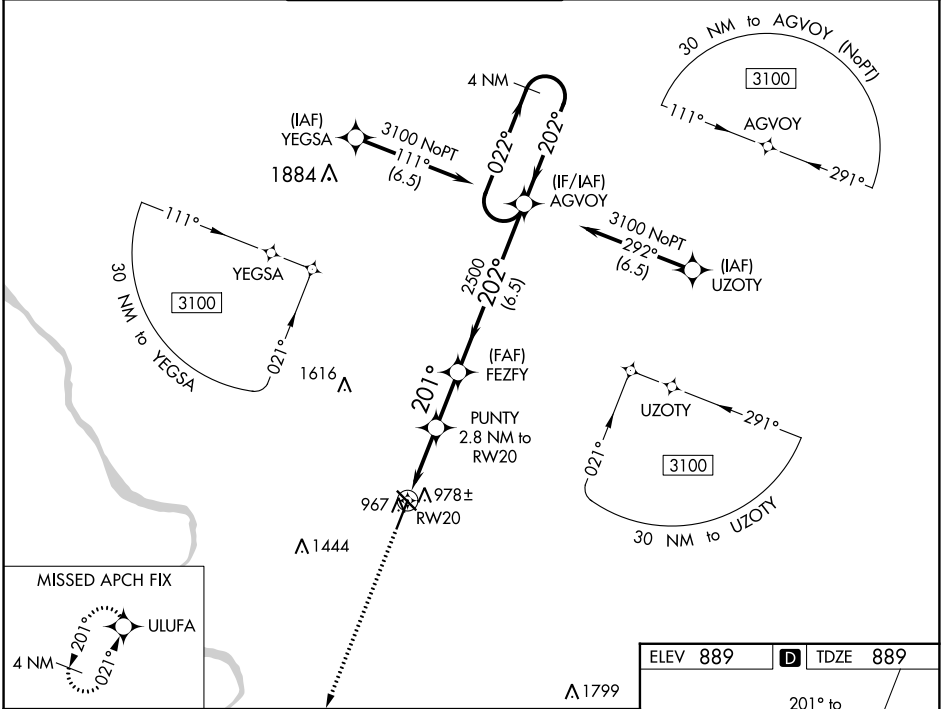
RNAV (GPS) RWY 20

COLUMBIA RGNL (COU)

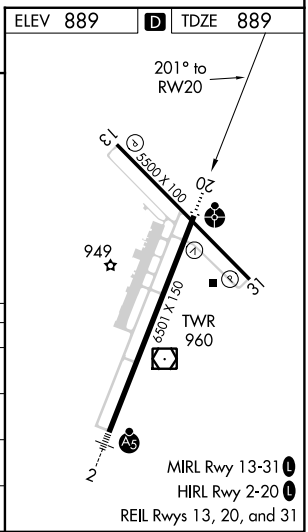
▼ For uncompensated Baro-VNAV systems, LNAV/VNAV NA below -17°C (2°F) or above 54°C (130°F). Circling NA for Cat D west of Rwy 2 and 13.
DME/DME RNP-0.3 NA. For inop ALS, increase Cat A/B visibility to 7/8 SM.

ODALS
 MISSED APPROACH: Climb to 3100 direct ULUFA and hold.

ATIS 128.45	MIZZU APP CON 124.375 353.7	COLUMBIA TOWER★ 119.3 (CTAF) 0 363.25	COLUMBIA RADIO 121.5 243.0 255.4	GND CON 121.6
-----------------------	---------------------------------------	---	--	-------------------------



CATEGORY	A	B	C	D
LPV DA		1139-3/4	250 (300-3/4)	
LNAV/VNAV DA		1139-3/4	250 (300-3/4)	
LNAV MDA	1240-3/4	351 (400-3/4)	1240-7/8	351 (400-7/8)
C CIRCLING	1300-1 411 (500-1)	1340-1 451 (500-1)	1340-1 1/2 451 (500-1 1/2)	1440-2 551 (600-2)



NC-3, 24 MAY 2018 to 21 JUN 2018

NC-3, 24 MAY 2018 to 21 JUN 2018