

WAAS CH 77599 W02A	APP CRS 021°	Rwy Idg TDZE Apt Elev	6501 889 889
--	------------------------	-----------------------------	---

RNAV (GPS) RWY 2

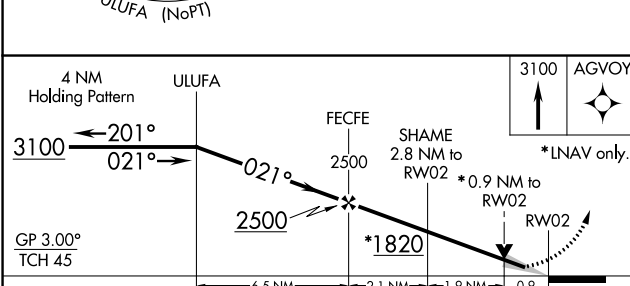
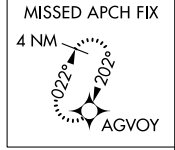
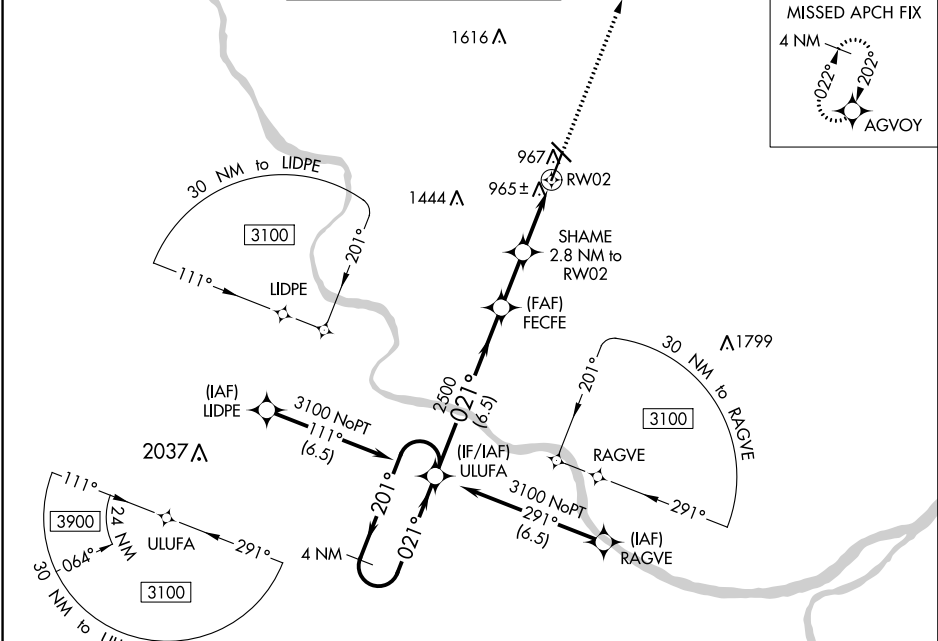
COLUMBIA RGNL (COU)

▽ For uncompensated Baro-VNAV systems, LNAV/VNAV NA below -17°C (2°F) or above 54°C (130°F). Circling NA for Cat D west of Rwy 2 and 13.
DME/DME RNP-0.3 NA. For inop ALS, increase LNAV/VNAV all Cats visibility to RVR 4500.
RVR 1800 authorized with the use of FD or AP or HUD to DA.



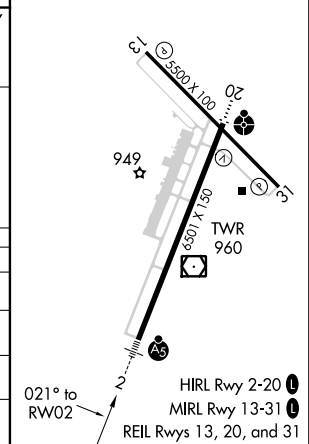
MISSED APPROACH: Climb to 3100 direct AGVOY and hold.

ATIS 128.45	MIZZO APP CON 124.375 353.7	COLUMBIA TOWER* 119.3 (CTAF) 0 363.25	COLUMBIA RADIO 121.5 243.0 255.4	GND CON 121.6
-----------------------	---------------------------------------	--	--	-------------------------



ELEV 889	D TDZE 889
----------	-------------------

CATEGORY	A	B	C	D
LPV DA#		1089/24	200 (200-½)	
LNAV/VNAV		1143/24	254 (300-½)	
LNAV MDA		1220/24	331 (400-½)	
C CIRCLING	1300-1 411 (500-1)	1340-1 451 (500-1)	1340-1½ 451 (500-1½)	1440-2 551 (600-2)



NC-3, 24 MAY 2018 to 21 JUN 2018

NC-3, 24 MAY 2018 to 21 JUN 2018