

WAAS CH 90323 W19A	APP CRS 187°	Rwy Idg TDZE 476 Apt Elev 489	5001 476 489
--	------------------------	---	---

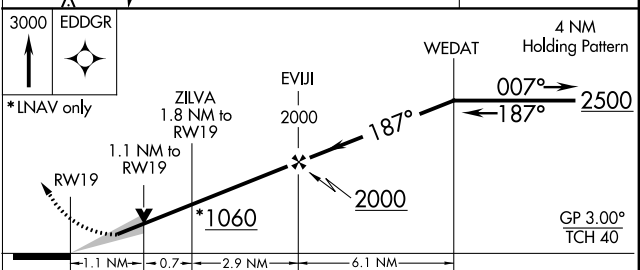
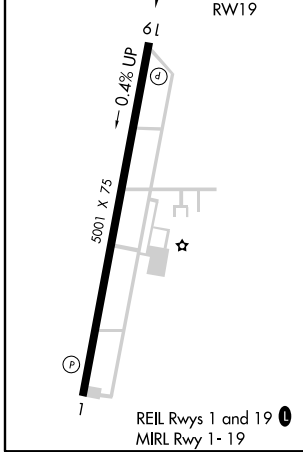
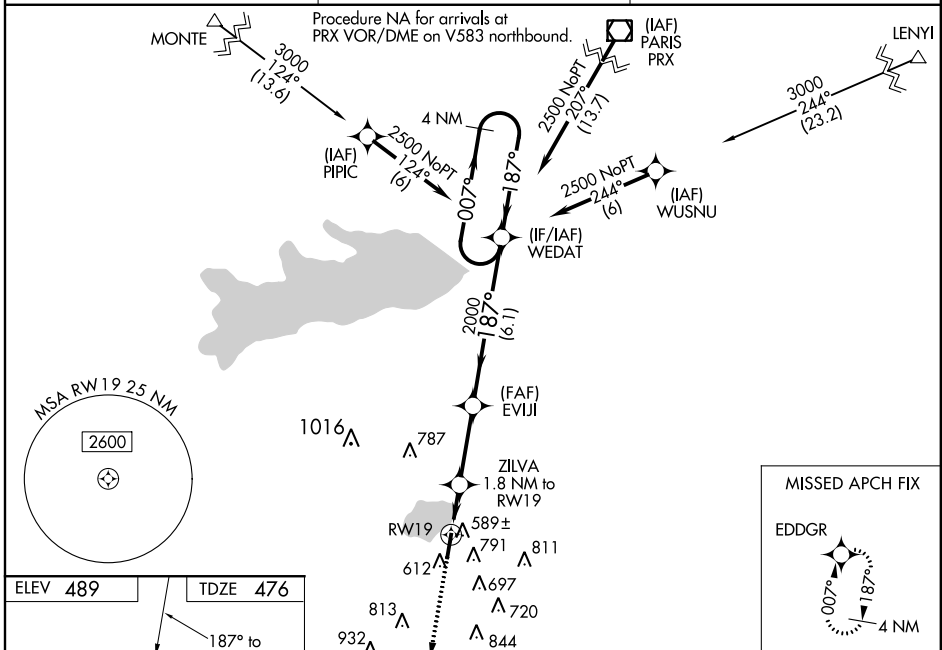
RNAV (GPS) RWY 19

SULPHUR SPRINGS MUNI (SLR)

⚠ When VGSI inop, Circling Rwy 1 NA at night. For uncompensated Baro-VNAV systems, LNAV/VNAV NA below -15°C (5°F) or above 54°C (130°F). Circling NA east of Rwy 1-19. DME/DME RNP-0.3 NA. Baro-VNAV and VDP NA when using Paris altimeter setting. When local altimeter setting not received, use Paris altimeter setting and increase all DA 77 feet and all MDA 80 feet, increase LPV all Cats visibility 1/8 mile, LNAV/VNAV all Cats visibility 1/4 mile and LNAV Cat C visibility 3/8 mile.

⚠ MISSED APPROACH: Climb to 3000 direct EDDGR and hold.

AWOS-3 118.35	FORT WORTH CENTER 132.025 360.75	UNICOM 123.075 (CTAF) 0
-------------------------	--	--



CATEGORY	A	B	C	D
LPV DA		676-3/4	200 (200-3/4)	NA
LNAV/VNAV DA		776-1	300 (300-1)	NA
LNAV MDA		840-1	364 (400-1)	NA
CIRCLING	920-1 431 (500-1)	940-1 451 (500-1)	940-1 1/2 451 (500-1 1/2)	NA

SC-2, 24 MAY 2018 to 21 JUN 2018

SC-2, 24 MAY 2018 to 21 JUN 2018