

WAAS CH 86324 W01A	APP CRS 007°	Rwy Idg TDZE Apt Elev	5001 489 489
----------------------------------------	------------------------	-----------------------------	-----------------------------------------

RNAV (GPS) RWY 1

SULPHUR SPRINGS MUNI (SLR)

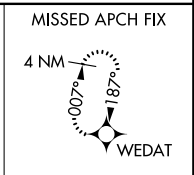
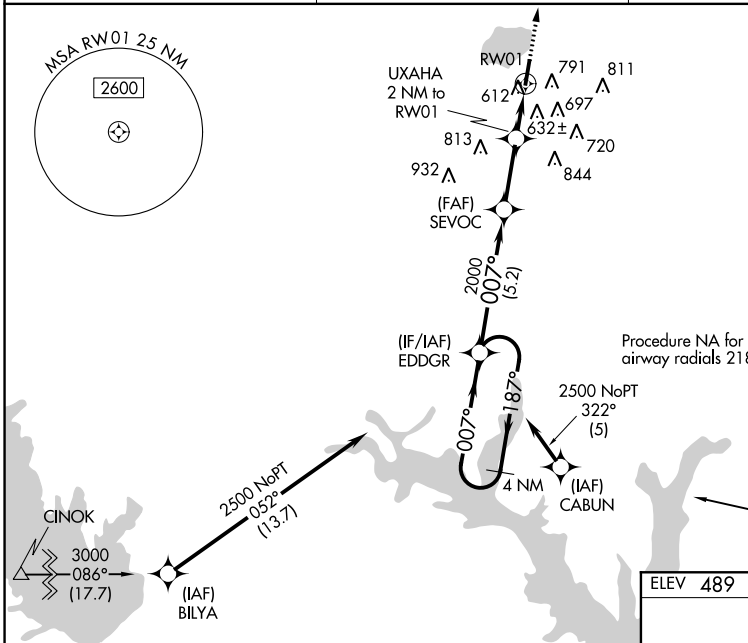
⚠ Baro-VNAV NA when using Paris altimeter setting. For uncompensated Baro-VNAV systems, LNAV/VNAV NA below -15°C (5°F) or above 54°C (130°F). When VGSI inop, Straight-in/Circling Rwy 1 procedure NA at night. Circling NA east of Rwy 1-19. DME/DME RNP-0.3 NA. Visibility reduction by helicopters NA. When local altimeter setting not received, use Paris altimeter setting and increase all DA 77 feet and all MDA 80 feet, increase LPV and LNAV/VNAV all Cats visibility ¼ mile, LNAV Cat C visibility ⅓ mile and Circling Cat C visibility ¼ mile.

MISSED APPROACH: Climb to 3000 direct WEDAT and hold.

AWOS-3
118.35

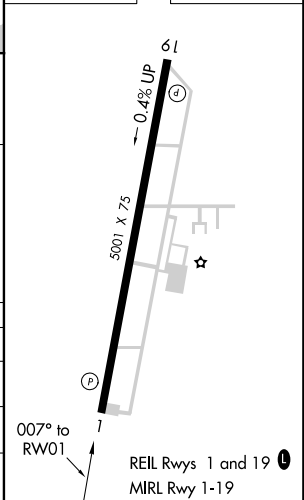
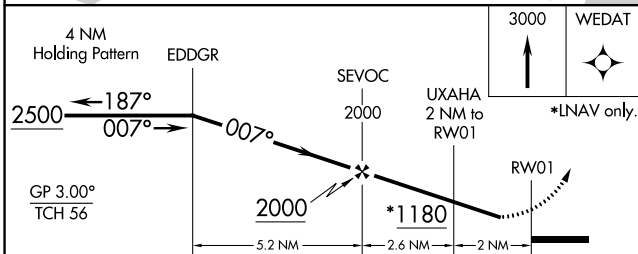
FORT WORTH CENTER
132.025 360.75

UNICOM
123.075 (CTAF) **0**



Procedure NA for arrival on UIM VOR/DME airway radials 218 CW 346

ELEV 489	TDZE 489
----------	----------



CATEGORY	A	B	C	D
LPV DA	803-1	314 (400-1)		NA
LNAV/VNAV DA	975-1½	486 (500-1½)		NA
LNAV MDA	1000-1	511 (600-1)	1000-1⅜ 511 (600-1⅜)	NA
CIRCLING	1000-1	511 (600-1)	1000-1½ 511 (600-1½)	NA

SC-2, 24 MAY 2018 to 21 JUN 2018

SC-2, 24 MAY 2018 to 21 JUN 2018