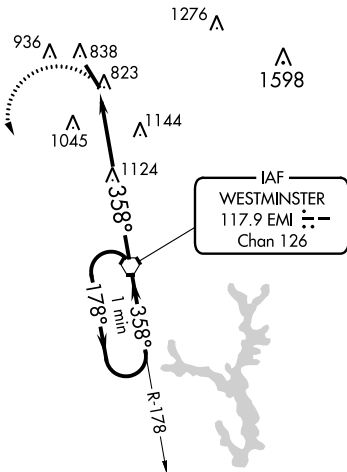
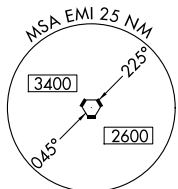


VORTAC EMI <b>117.9</b> Chan <b>126</b>	APP CRS <b>358°</b>	Rwy Idg TDZE Apt Elev	<b>5100</b> <b>788</b> <b>789</b>
---	------------------------	-----------------------------	---

# VOR RWY 34

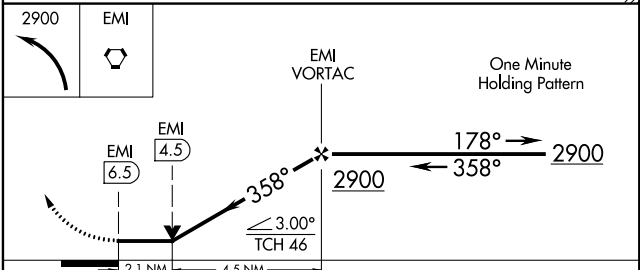
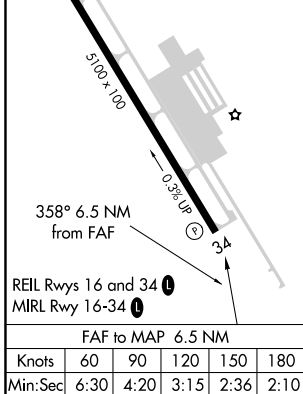
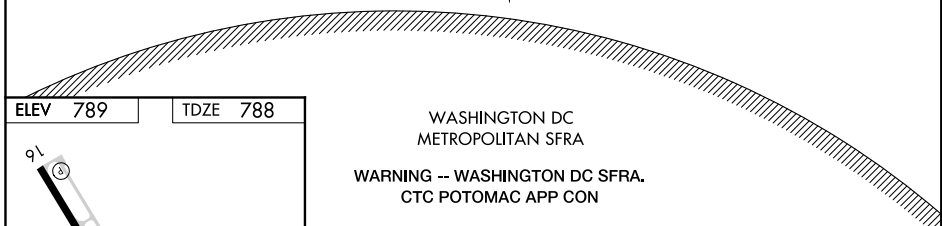
CARROLL COUNTY RGNL/JACK B. POAGE FIELD (DMW)

<p>▼ ▲ NA</p>		<p>MISSED APPROACH: Climbing left turn to 2900 direct EMI VORTAC and hold.</p>	
AWOS-3 <b>121.25</b>	POTOMAC APP CON <b>125.525 291.625</b>	GCO <b>121.725</b>	UNICOM <b>122.7 (CTAF) 0</b>



NE-3, 24 MAY 2018 to 21 JUN 2018

NE-3, 24 MAY 2018 to 21 JUN 2018



CATEGORY	A	B	C	D
S-34	1480-1	692 (700-1)	1480-2 692 (700-2)	NA
CIRCLING	1480-1	691 (700-1)	1480-2 691 (700-2)	NA

# VOR RWY 34