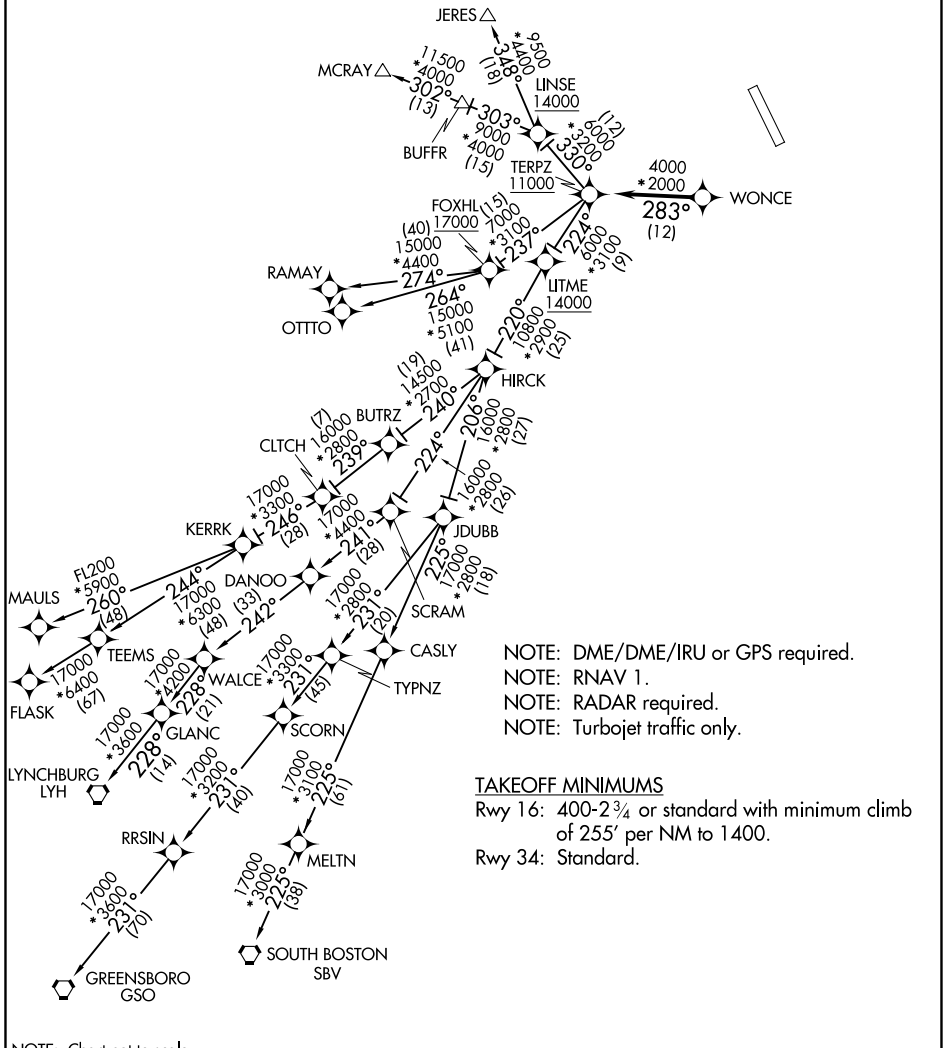


# TERPZ SIX DEPARTURE (RNAV)

AWOS-3  
121.25  
CLNC DEL  
129.525  
UNICOM  
122.7 (CTAF)  
POTOMAC DEP CON  
125.52

**TOP ALTITUDE:**  
**RAMAY, OTTTO, MAULS, FLASK,**  
**SBV, LYH, GSO TRANSITIONS:**  
**17000**  
**JERES, MCRAY TRANSITIONS:**  
**16000**



NOTE: DME/DME/IRU or GPS required.  
NOTE: RNAV 1.  
NOTE: RADAR required.  
NOTE: Turbojet traffic only.

TAKEOFF MINIMUMS  
Rwy 16: 400-2<sup>3</sup>/<sub>4</sub> or standard with minimum climb of 255' per NM to 1400.  
Rwy 34: Standard.

NOTE: Chart not to scale.

NE-3, 24 MAY 2018 to 21 JUN 2018

NE-3, 24 MAY 2018 to 21 JUN 2018