

WAAS CH 40422 W06A	APP CRS 056°	Rwy Idg 4350 TDZE 145 Apt Elev 148
---------------------------------	------------------------	---

RNAV (GPS) RWY 6

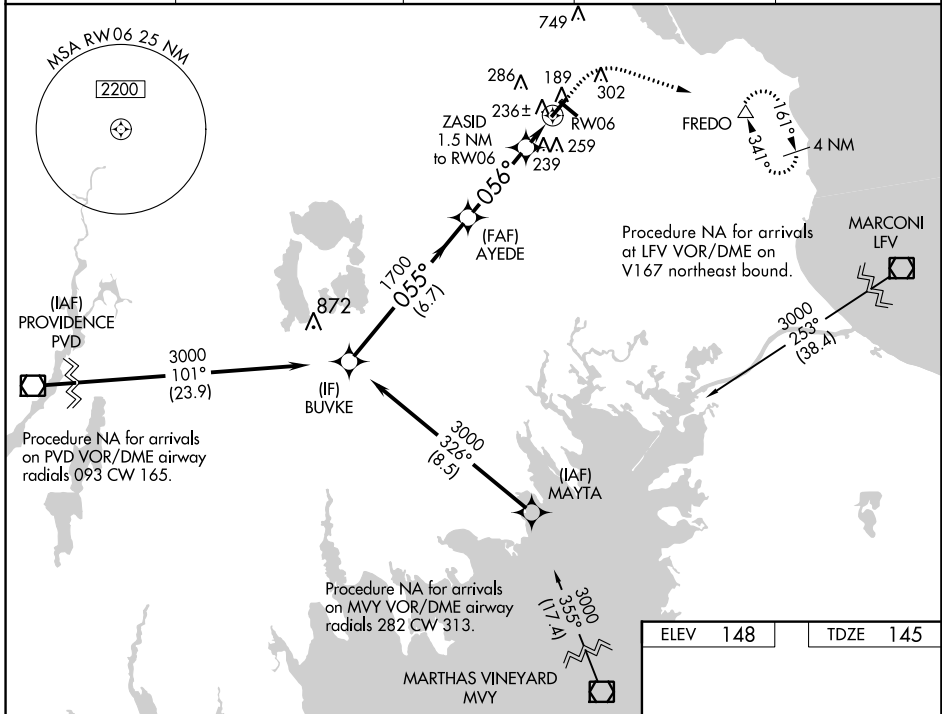
PLYMOUTH MUNI (PYM)

⚠ For uncompensated Baro-VNAV systems, LNAV/VNAV NA below -15°C (5°F) or above 54°C (130°F). For inoperative MALSF, increase LNAV/VNAV visibility to 7/8 mile. **⚠** DME/DME RNP-0.3 NA. Helicopter visibility reduction below 3/4 SM NA. When local altimeter setting not received, use Taunton altimeter setting and increase all DA 45 feet and all MDA 60 feet and increase LNAV Cat C visibility 1/4 mile. Baro-VNAV and VDP NA with Taunton altimeter setting. Night landing: Rwy 15, 33 NA.

MALSF

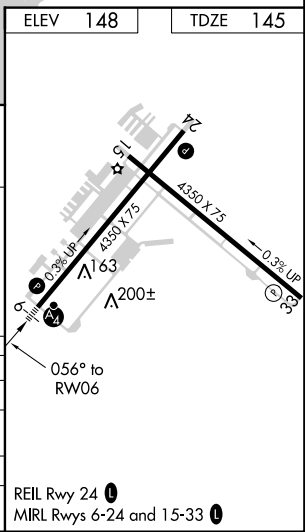
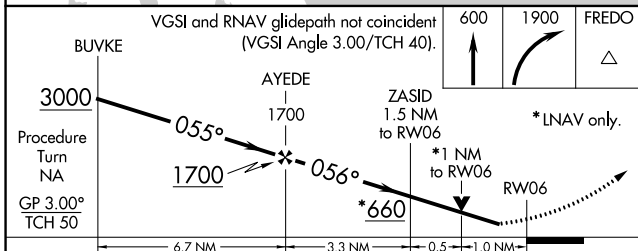
MISSED APPROACH: Climb to 600 then climbing right turn to 1900 direct FREDO and hold.

ASOS 135.625	BOSTON APP CON * 118.2 284.6	CLNC DEL 127.75	UNICOM 123.0 (CTAF)	122.9
------------------------	--	---------------------------	-------------------------------	--------------



NE-1, 24 MAY 2018 to 21 JUN 2018

NE-1, 24 MAY 2018 to 21 JUN 2018



	A	B	C	D
LPV DA		345-3/4	200 (200-3/4)	NA
LNAV/VNAV DA		426-3/4	281 (300-3/4)	NA
LNAV MDA		500-3/4	355 (400-3/4)	NA
CIRCLING	620-1	472 (500-1)	640-1 1/2 492 (500-1 1/2)	NA