

WAAS CH 42922 W24A	APP CRS 236°	Rwy Idg TDZE Apt Elev	4350 147 148
--	------------------------	-----------------------------	---

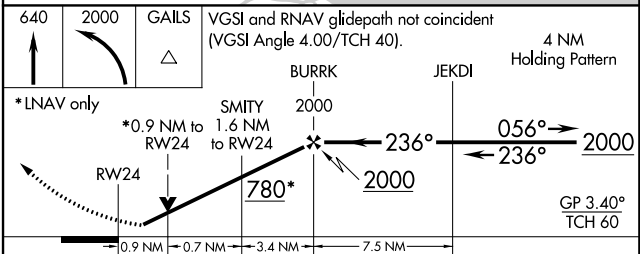
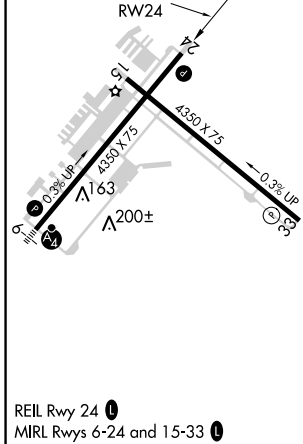
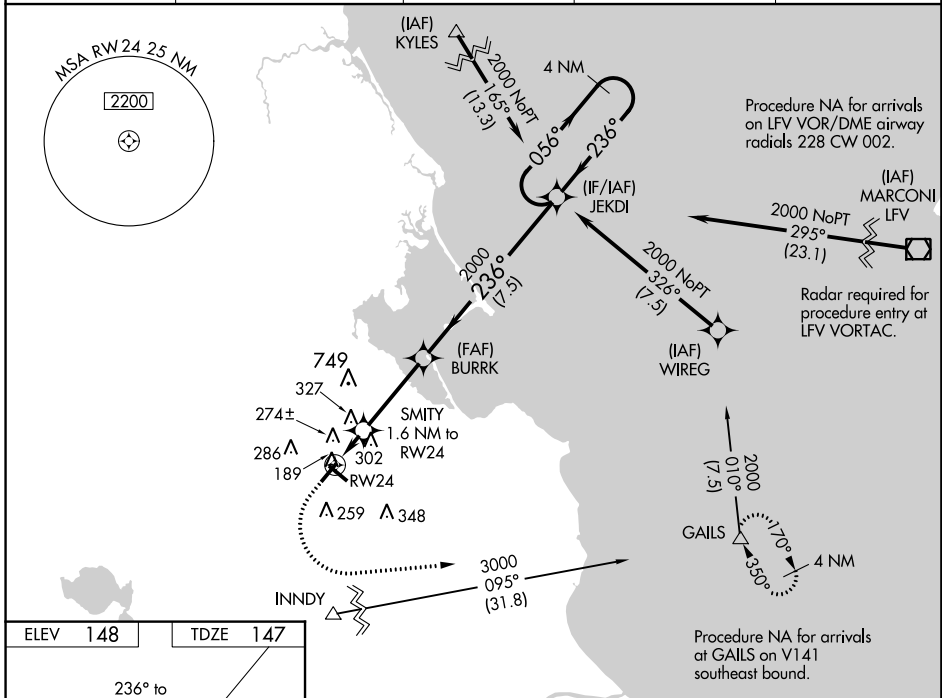
RNAV (GPS) RWY 24

PLYMOUTH MUNI (PYM)

⚠ Baro-VNAV NA when using Taunton altimeter setting. For uncompensated Baro-VNAV systems, LNAV/VNAV NA below -15°C (5°F) or above 51°C (123°F). DME/DME RNP-0.3 NA. Helicopter visibility reduction below 3/4 SM NA. When local altimeter setting not received, use Taunton altimeter setting and increase all DA 45 feet and all MDA 60 feet and increase LNAV Cat C visibility 1/8 mile. Night landing: Rwy 15, 33 NA. VDP NA when using Taunton altimeter setting.

⚠ MISSED APPROACH: Climb to 640 then climbing left turn to 2000 direct GAILS and hold.

ASOS 135.625	BOSTON APP CON * 118.2 284.6	CLNC DEL 127.75	UNICOM 123.0 (CTAF)	122.9 0
------------------------	--	---------------------------	-------------------------------	-----------------------



CATEGORY	A	B	C	D
LPV DA		446-1 298 (300-1)		NA
LNAV/VNAV DA		445-1 297 (300-1)		NA
LNAV MDA	580-1	432 (500-1)	580-1/4 432 (500-1/4)	NA
CIRCLING	620-1	472 (500-1)	640-1/2 492 (500-1/2)	NA

NE-1, 24 MAY 2018 to 21 JUN 2018

NE-1, 24 MAY 2018 to 21 JUN 2018