

WAAS CH 93639 W15A	APP CRS 146°	Rwy Idg 4350 TDZE 147 Apt Elev 148
--	------------------------	---

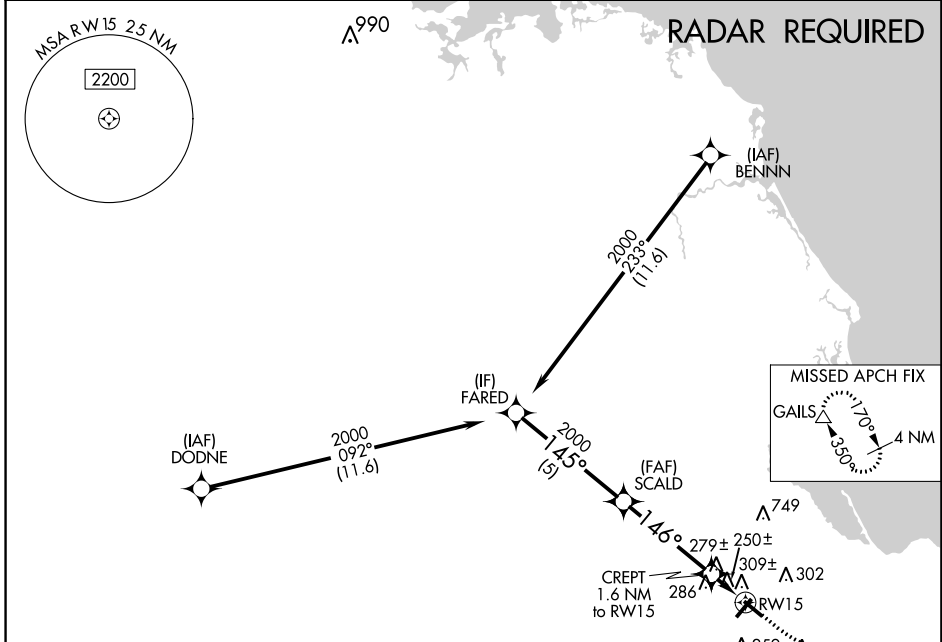
RNAV (GPS) RWY 15

PLYMOUTH MUNI (PYM)

⚠ DME/DME RNP-0.3 NA. Rwy 15 helicopter visibility reduction below 1 SM NA. When local altimeter setting not received, use Tauton altimeter setting: increase all MDA 60 feet and visibility Cat C ¼ SM. Straight-in Rwy 15 NA at night, Circling Rwy 15, 33, NA at night.

MISSED APPROACH: Climb to 600 then climbing left turn to 2000 direct GAILS and hold.

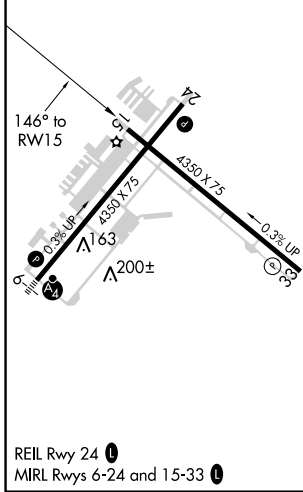
ASOS 135.625	BOSTON APP CON * 118.2 284.6	CLNC DEL 127.75	UNICOM 123.0 (CTAF)	122.9 0
------------------------	--	---------------------------	-------------------------------	-----------------------



NE-1, 24 MAY 2018 to 21 JUN 2018

NE-1, 24 MAY 2018 to 21 JUN 2018

ELEV 148	TDZE 147
-----------------	-----------------



REIL Rwy 24 **0**
MIRL Rws 6-24 and 15-33 **0**

	600	2000	GAILS
	↑	↶	△
FARED	SCALD	CREPT 1.6 NM to RW15	RW15
2000	2000	700	
145°		146°	
5 NM		4.1 NM	1.6 NM
3.00° TCH 50			
CATEGORY	A	B	C
LP MDA	500-1 353 (400-1)		
LNAV MDA	560-1	413 (500-1)	560-1 1/8 413 (500-1 1/8)
C CIRCLING	620-1 472 (500-1)	640-1 492 (500-1)	740-1 1/2 592 (600-1 1/2)