

LOC/DME I-PYM <b>109.35</b> Chan 30 (Y)	APP CRS <b>056°</b>	Rwy Idg TDZE Apt Elev	<b>4350</b> <b>145</b> <b>148</b>
---	------------------------	-----------------------------	---

# ILS or LOC/DME RWY 6

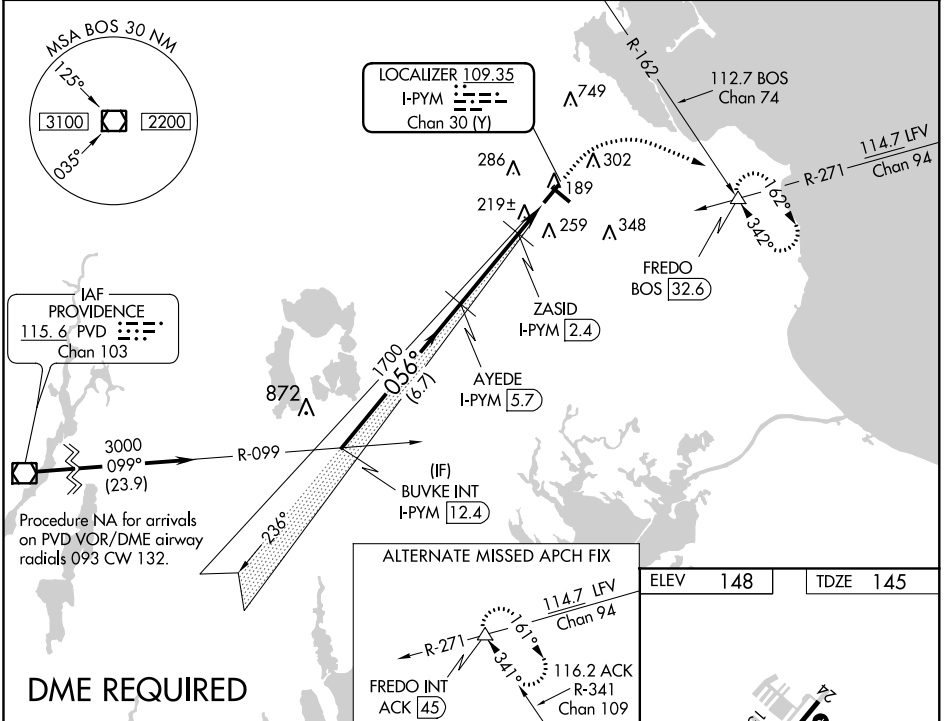
PLYMOUTH MUNI (PYM)

**⚠** Helicopter visibility reduction below  $\frac{3}{4}$  SM NA. VDP NA with Taunton altimeter setting. When local altimeter setting not received, use Taunton altimeter setting and increase all DA 45 feet and all MDA 60 feet and increase S-LOC 6 Cat C visibility  $\frac{1}{4}$  mile. For inoperative MALSF when using Taunton altimeter setting, increase S-LOC 6 Cat C visibility to  $1\frac{1}{2}$  mile. Night landing: Rwy 15, 33 NA.

**MALSF**

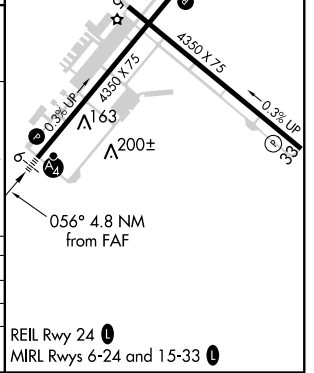
**MISSED APPROACH:** Climb to 600 then climbing right turn to 2000 on heading 100° and on BOS VOR/DME R-162 to FREDO INT/BOS 32.6 DME and hold.

ASOS <b>135.625</b>	BOSTON APP CON ★ <b>118.2 284.6</b>	CLNC DEL <b>127.75</b>	UNICOM <b>123.0</b> (CTAF)	<b>122.9</b>
------------------------	--	---------------------------	-------------------------------	--------------



**DME REQUIRED**

BUVE INT I-PYM 12.4	600	2000	BOS R-162	FREDO
AYEDE I-PYM 5.7	↑	hdg 100°	△	
ZASID I-PYM 2.4	*LOC only.			
*I-PYM 1.9				
I-PYM 0.9				
GS 3.00° TCH 50				
6.7 NM	3.3 NM	0.5 NM	1.0	
CATEGORY	A	B	C	D
S-ILS 6	345- $\frac{3}{4}$	200 (200- $\frac{3}{4}$ )		NA
S-LOC 6	480- $\frac{3}{4}$	335 (400- $\frac{3}{4}$ )		NA
CIRCLING	620-1	472 (500-1)	640-1½ 492 (500-1½)	NA



NE-1, 24 MAY 2018 to 21 JUN 2018

NE-1, 24 MAY 2018 to 21 JUN 2018