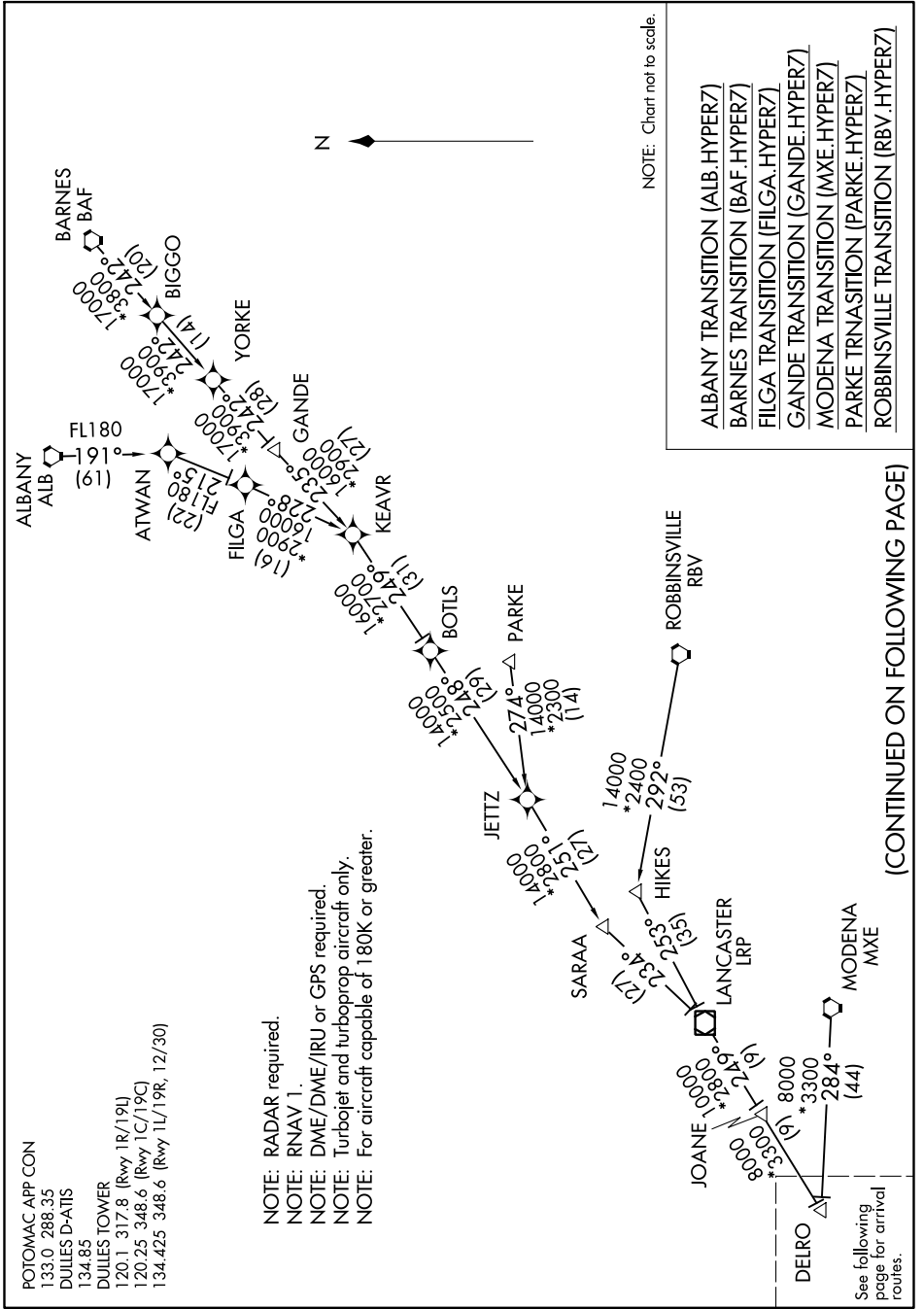


HYPER SEVEN ARRIVAL (RNAV) Transition Routes

WASHINGTON, DC

NE-3, 24 MAY 2018 to 21 JUN 2018



POTOMAC APP CON
 133.0 288.35
 DUILLES D-ATS
 134.85
 DUILLES TOWER
 120.1 317.8 (Rwy 1R/19L)
 120.25 348.6 (Rwy 1C/19C)
 134.425 348.6 (Rwy 1L/19R, 12/30)

NOTE: RADAR required.
 NOTE: RNAV 1.
 NOTE: DME/DME/IRU or GPS required.
 NOTE: Turbojet and turboprop aircraft only.
 NOTE: For aircraft capable of 180K or greater.

- NOTE: Chart not to scale.
- ALBANY TRANSITION (ALB.HYPER7)
 - BARNES TRANSITION (BAF.HYPER7)
 - FILGA TRANSITION (FILGA.HYPER7)
 - GANDE TRANSITION (GANDE.HYPER7)
 - MODENA TRANSITION (MXE.HYPER7)
 - PARKE TRNANSITION (PARKE.HYPER7)
 - ROBBINSVILLE TRANSITION (RBV.HYPER7)

(CONTINUED ON FOLLOWING PAGE)

See following page for arrival routes.

NE-3, 24 MAY 2018 to 21 JUN 2018

HYPER SEVEN ARRIVAL (RNAV) Transition Routes

WASHINGTON, DC