

|  |                        |   |
|--|------------------------|---|
| WAAS<br>CH <b>49037</b><br><b>W28A</b> | APP CRS<br><b>282°</b> | Rwy Idg <b>4255</b><br>TDZE <b>46</b><br>Apt Elev <b>55</b> |
|--|------------------------|---|

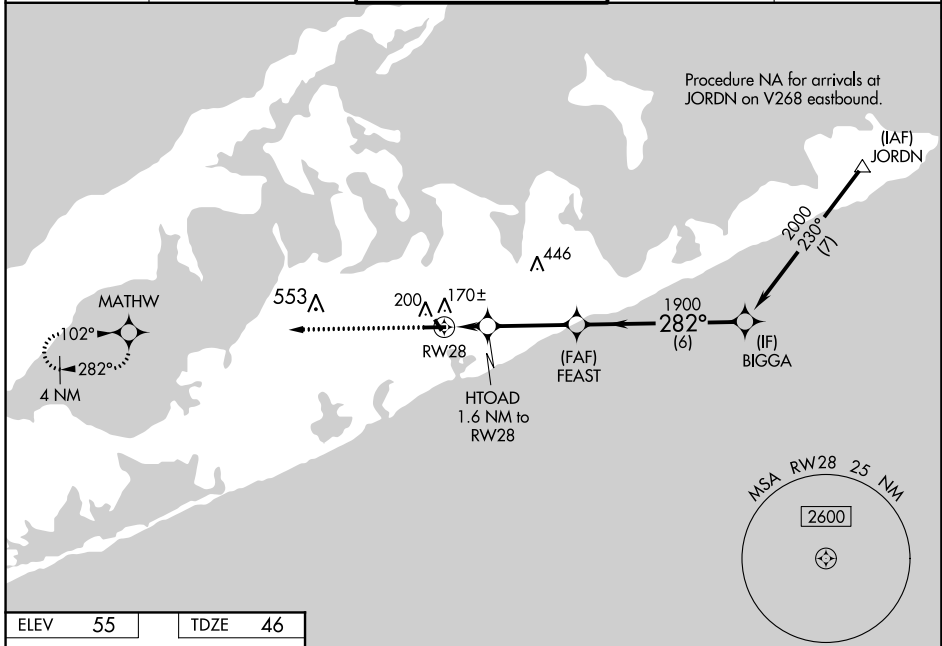
# RNAV (GPS) Z RWY 28

EAST HAMPTON (HTO)

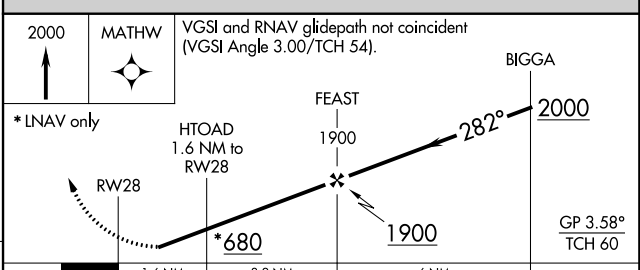
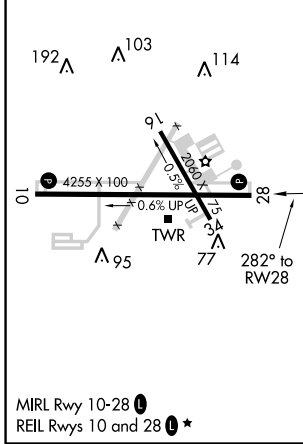
**⚠** Baro-VNAV NA when using Westhampton Beach altimeter setting. For uncompensated Baro-VNAV systems, LNAV/VNAV NA below -15°C (5°F) or above 48°C (118°F). DME/DME RNP-0.3 NA. Helicopter visibility reduction below 1 SM NA. When local altimeter setting not received, use Westhampton Beach altimeter setting and increase all DA 45 feet and all MDA 60 feet; increase LNAV Cat C and Circling Cat C visibility ¼ mile. Night landing: Rwy 10, 28 operational VGSI required, remain at or above VGSI glidepath until threshold.

**⚠** NA MISSED APPROACH: Climb to 2000 direct MATHW and hold.

|                            |   |   |                         |                           |
|----------------------------|---|---|-------------------------|---------------------------|
| AWOS-3PT<br><b>118.075</b> | NEW YORK APP CON<br><b>125.975 343.65</b> | EAST HAMPTON TOWER ★<br><b>125.225 (CTAF) 0</b> | GND CON<br><b>121.9</b> | CLNC DEL<br><b>118.95</b> |
|----------------------------|---|---|-------------------------|---------------------------|



|                |                |
|----------------|----------------|
| ELEV <b>55</b> | TDZE <b>46</b> |
|----------------|----------------|



| CATEGORY          | A     | B           | C                      | D  |
|-------------------|-------|-------------|------------------------|----|
| LPV DA            |       | 350-1       | 304 (300-1)            | NA |
| LNAV/VNAV DA      |       | 356-1       | 310 (400-1)            | NA |
| LNAV MDA          |       | 420-1       | 374 (400-1)            | NA |
| <b>C</b> CIRCLING | 600-1 | 545 (600-1) | 640-1½<br>585 (600-1½) | NA |