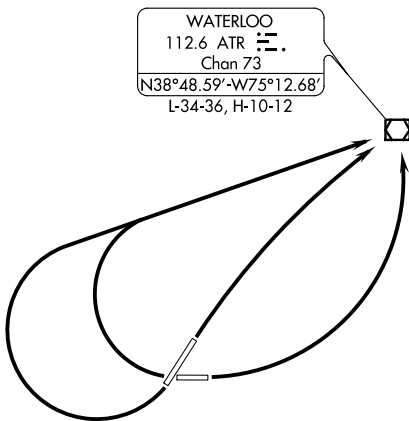


# GEORGETOWN ONE DEPARTURE

DOVER APP CON  
132.425 257.875  
DOVER CLNC DEL  
125.55  
ASOS  
118.375  
UNICOM  
123.0

**TOP ALTITUDE:  
2000**



### TAKEOFF MINIMUMS:

Rwys 4, 10, 28: Standard.

Rwy 22: 200-1/4 or standard with a minimum climb of 201' per NM to 300, or alternatively with standard takeoff minimums and a normal 200' per NM climb gradient, takeoff must occur no later than 1100' prior to DER.

### TAKEOFF OBSTACLES:

Rwy 4: Trees beginning 7' from DER, 459' left of centerline, up to 74' AGL/118' MSL.

Tree 2322' from DER, 428' right of centerline, 61' AGL/109' MSL.

Tree 5161' from DER, 710' left of centerline, 180' MSL.

Rwy 10: Vehicle on road 94' from DER, 446' left of centerline, 15' AGL/59' MSL.

Trees and pole beginning 443' from DER, 87' left of centerline, up to 100' AGL/144' MSL.

Trees beginning 641' from DER, 109' right of centerline, up to 100' AGL/144' MSL.

Tree 3732' from DER, 37' left of centerline, 100' AGL/149' MSL.

Rwy 22: Tree 2035' from DER, 781' left of centerline, 172' MSL.

Tower 1 NM from DER, 465' left of centerline, 215' MSL.

Rwy 28: Trees beginning 358' from DER, 567' left of centerline, up to 100' AGL/149' MSL.

Trees beginning 1299' from DER, 686' right of centerline, up to 100' AGL/149' MSL.

Trees beginning 1595' from DER, 647' right of centerline, up to 100' AGL/154' MSL.

Trees beginning 1892' from DER, crossing centerline, up to 100' AGL/154' MSL.

Tank 4498' from DER, 219' right of centerline, 180' MSL.

NOTE: Chart not to scale.



### DEPARTURE ROUTE DESCRIPTION

TAKEOFF RUNWAY 4: Turn right direct ATR VOR/DME, thence . . .

TAKEOFF RUNWAY 10: Turn left direct ATR VOR/DME, thence . . .

TAKEOFF RUNWAY 22: Turn right direct ATR VOR/DME, thence . . .

TAKEOFF RUNWAY 28: Turn right direct ATR VOR/DME, thence . . .

. . . maintain 2000. Expect clearance to filed altitude three (3) minutes after departure.

# GEORGETOWN ONE DEPARTURE