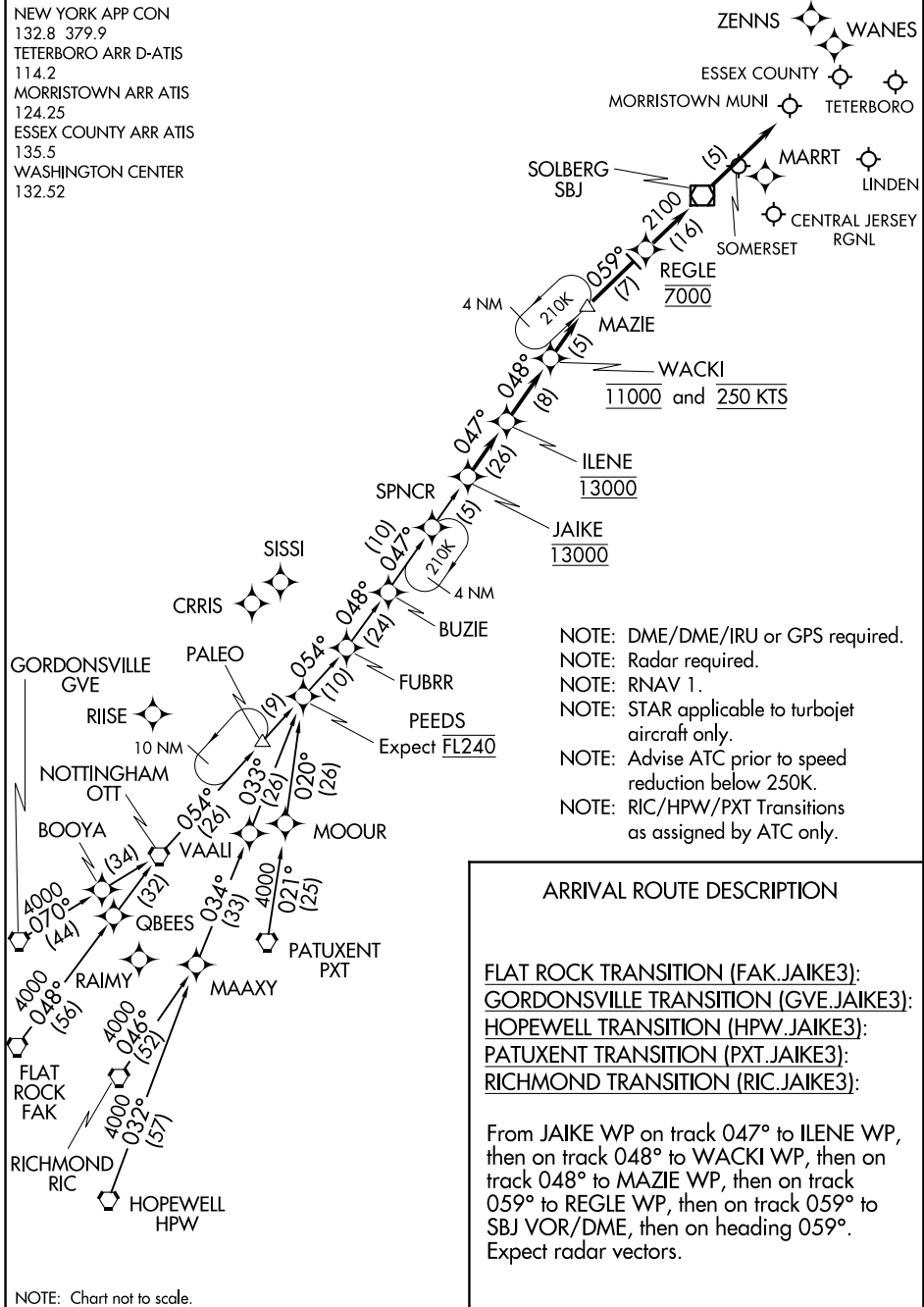


JAIKE THREE ARRIVAL (RNAV)

TETERBORO, NEW JERSEY

NEW YORK APP CON
 132.8 379.9
 TETERBORO ARR D-ATIS
 114.2
 MORRISTOWN ARR ATIS
 124.25
 ESSEX COUNTY ARR ATIS
 135.5
 WASHINGTON CENTER
 132.52



- NOTE: DME/DME/IRU or GPS required.
- NOTE: Radar required.
- NOTE: RNAV 1.
- NOTE: STAR applicable to turbojet aircraft only.
- NOTE: Advise ATC prior to speed reduction below 250K.
- NOTE: RIC/HPW/PXT Transitions as assigned by ATC only.

ARRIVAL ROUTE DESCRIPTION

- FLAT ROCK TRANSITION (FAK.JAIKE3):
- GORDONSVILLE TRANSITION (GVE.JAIKE3):
- HOPEWELL TRANSITION (HPW.JAIKE3):
- PATUXENT TRANSITION (PXT.JAIKE3):
- RICHMOND TRANSITION (RIC.JAIKE3):

From JAIKE WP on track 047° to ILENE WP, then on track 048° to WACKI WP, then on track 048° to MAZIE WP, then on track 059° to REGLE WP, then on track 059° to SBJ VOR/DME, then on heading 059°. Expect radar vectors.

NOTE: Chart not to scale.

JAIKE THREE ARRIVAL (RNAV)

TETERBORO, NEW JERSEY