

VORTAC GGG 112.3 Chan 70	APP CRS 306°	Rwy Idg TDZE Apt Elev	9200 354 365
---------------------------------------	------------------------	-----------------------------	---

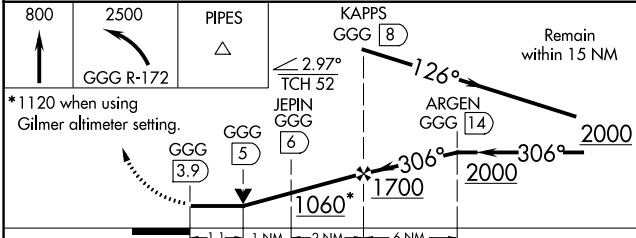
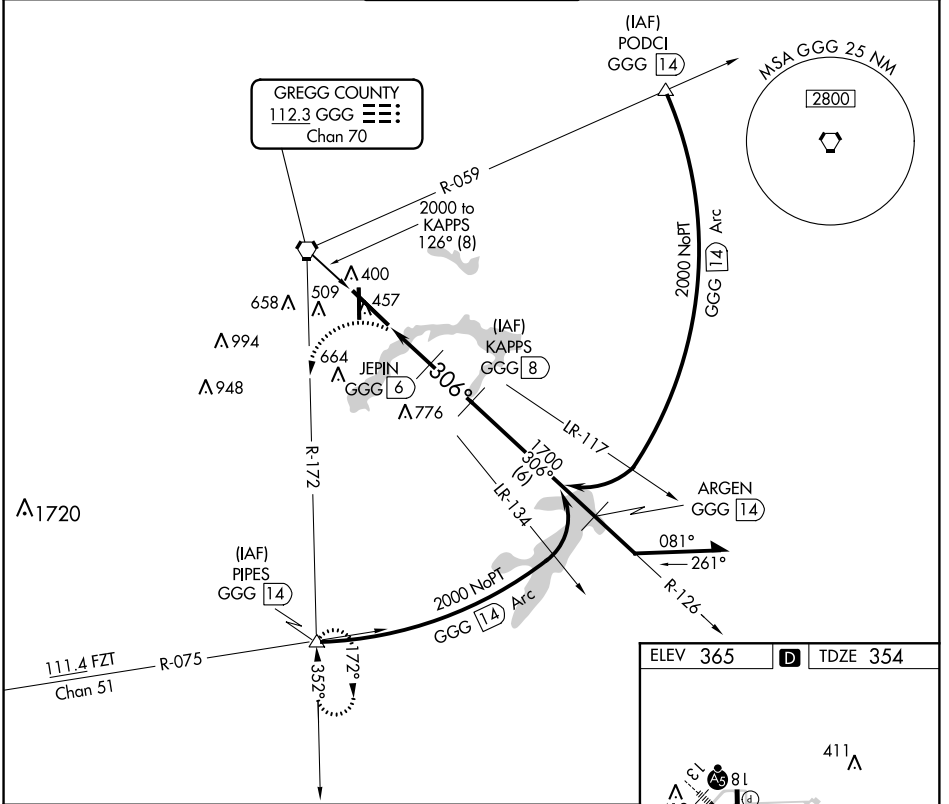
VOR/DME or TACAN RWY 31

EAST TEXAS RGNL (GGG)

⚠ When local altimeter setting not received, use Gilmer altimeter setting and increase all MDA 60 feet and increase S-31 Cats C/D/E and Circling Cat E visibility ¼ mile. VDP NA when using Gilmer altimeter setting.

⚠ MISSED APPROACH: Climb to 800, then climbing left turn to 2500 via GGG R-172 to PIPES Int and hold.

ATIS 119.65	LONGVIEW APP CON* 124.275 257.975	EASTEX TOWER* 119.2 (CTAF) 377.05	GND CON 121.6	UNICOM 122.95
-----------------------	---	---	-------------------------	-------------------------



CATEGORY	A	B	C	D	E
S-31	740-1	386 (400-1)		740-1¼	386 (400-1¼)
CIRCLING	860-1	495 (500-1)	860-1½ 495 (500-1½)	920-2 555 (600-2)	1080-2½ 715 (800-2½)

HIRL Rwy 13-31 **1**
MIRL Rwy 18-36

SC-2, 24 MAY 2018 to 21 JUN 2018

SC-2, 24 MAY 2018 to 21 JUN 2018