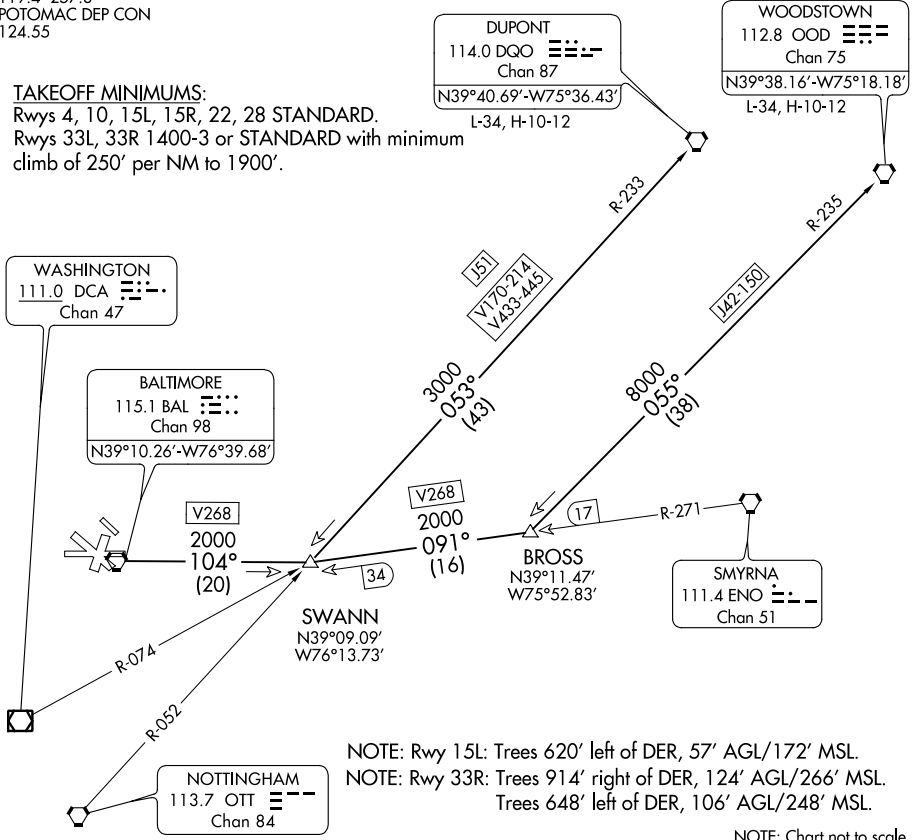


(SWANN3.SWANN) 17173
SWANN THREE DEPARTURE

BALTIMORE/
 WASHINGTON INTL THURGOOD MARSHALL (BWI)
 AL-804 (FAA) BALTIMORE, MARYLAND

D-ATIS 115.1 127.8
 CLNC DEL 118.05
 CPDLC
 GND CON 121.9
 BALTIMORE TOWER
 119.4 257.8
 POTOMAC DEP CON
 124.55

TAKEOFF MINIMUMS:
 Rwys 4, 10, 15L, 15R, 22, 28 STANDARD.
 Rwys 33L, 33R 1400-3 or STANDARD with minimum
 climb of 250' per NM to 1900'.



NOTE: Rwy 15L: Trees 620' left of DER, 57' AGL/172' MSL.
 NOTE: Rwy 33R: Trees 914' right of DER, 124' AGL/266' MSL.
 Trees 648' left of DER, 106' AGL/248' MSL.

NOTE: Chart not to scale.



DEPARTURE ROUTE DESCRIPTION

TAKEOFF RWY 28:

JETS: Fly runway heading until 3 DME, then turn left heading 150° Thence....

PROPS: Fly runway heading. Thence....

TAKEOFF ALL OTHER RUNWAYS: Fly runway heading. Thence....

....For vectors to transition or assigned route, expect clearance to filed altitude ten minutes after departure.

DUPONT TRANSITION (SWANN3.DQO): From over BAL VORTAC via BAL R-104 to SWANN INT, then via DGO VORTAC R-233 to DGO VORTAC.

WOODSTOWN TRANSITION (SWANN3.OOD): From over BAL VORTAC via BAL R-104 to SWANN INT, then via ENO VORTAC R-271 to BROSS INT, then via OOD VORTAC R-235 to OOD VORTAC.