

17173

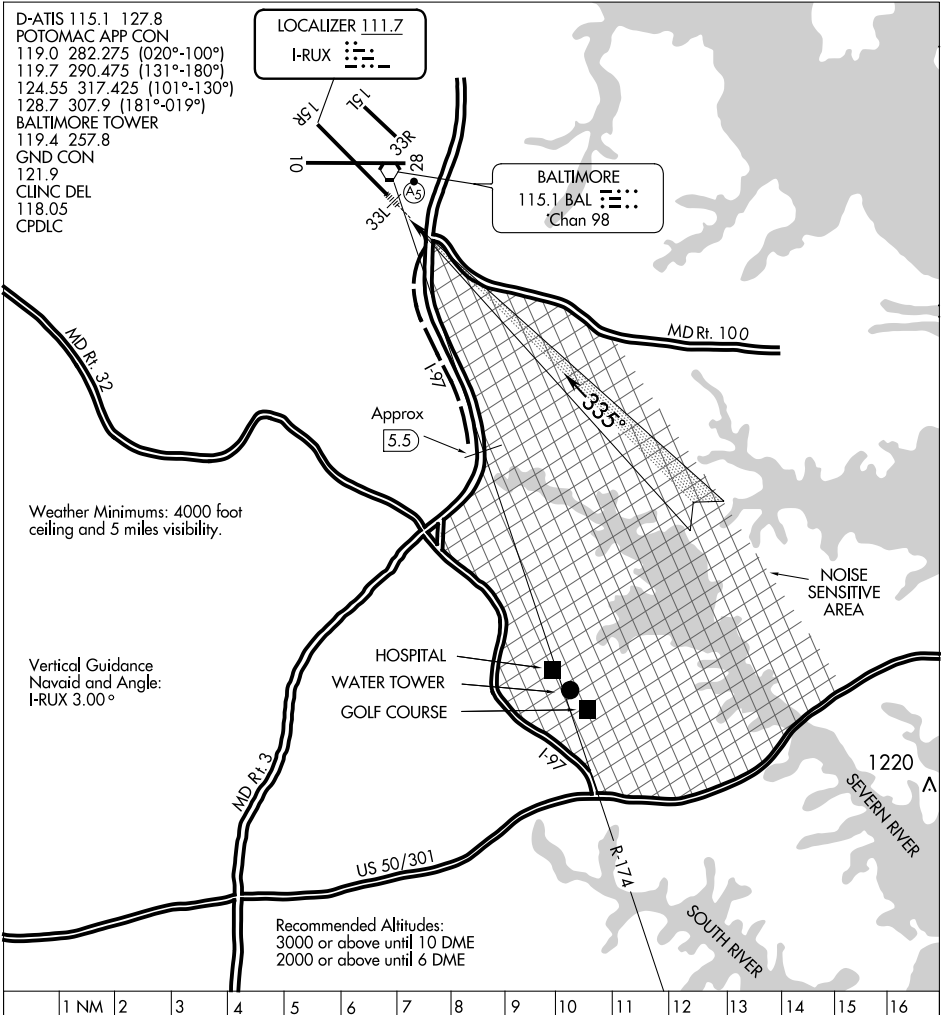
# INTERSTATE VISUAL RWY 33L

BALTIMORE/  
WASHINGTON INTL THURGOOD MARSHALL (BWI)  
AL-804 (FAA)  
BALTIMORE, MARYLAND

D-ATIS 115.1 127.8  
 POTOMAC APP CON  
 119.0 282.275 (020°-100°)  
 119.7 290.475 (131°-180°)  
 124.55 317.425 (101°-130°)  
 128.7 307.9 (181°-019°)  
 BALTIMORE TOWER  
 119.4 257.8  
 GND CON  
 121.9  
 CLINC DEL  
 118.05  
 CPDLC

LOCALIZER 111.7  
 I-RUX

BALTIMORE  
 115.1 BAL  
 Chan 98



Weather Minimums: 4000 foot ceiling and 5 miles visibility.

Vertical Guidance  
 Navaid and Angle:  
 I-RUX 3.00°

HOSPITAL  
 WATER TOWER  
 GOLF COURSE

Recommended Altitudes:  
 3000 or above until 10 DME  
 2000 or above until 6 DME

1 NM	2	3	4	5	6	7	8	9	10	11	12	13	14	15	16
------	---	---	---	---	---	---	---	---	----	----	----	----	----	----	----

## INTERSTATE VISUAL RWY 33L

Radar vectors will be provided to the BAL 174 RADIAL. When cleared for the Interstate Visual Runway 33L Approach, aircraft will proceed via the BAL 174 radial until over I-97 (Approx. 5.5 DME). Then via I-97 to join Runway 33L final approach course. Runway 33L ILS with MALSRS will be on and available for use. Noise sensitive area east of I-97. This procedure applicable to turbojets arriving via OTT VORTAC.

**INTERSTATE VISUAL RWY 33L**  
 Amdt 1 05OCT00

BALTIMORE/  
 WASHINGTON INTL THURGOOD MARSHALL (BWI)  
 39°11'N-76°40'W  
 BALTIMORE, MARYLAND

NE-3, 24 MAY 2018 to 21 JUN 2018

NE-3, 24 MAY 2018 to 21 JUN 2018