

LOC I-BAL 109.7	APP CRS 105°	Rwy Idg 9952 TDZE 143 Apt Elev 146
---------------------------	------------------------	---

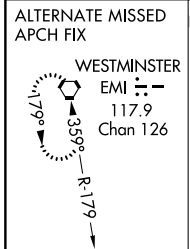
BALTIMORE/
WASHINGTON INTL THURGOOD MARSHALL (BWI) **ILS RWY 10 (SA CAT I)**

▼ DME required.
Requires specific OPSPEC, MSPEC,
or LOA approval and use of HUD to DH.

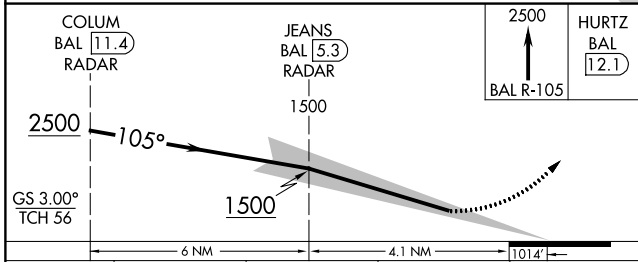
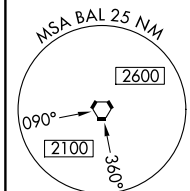
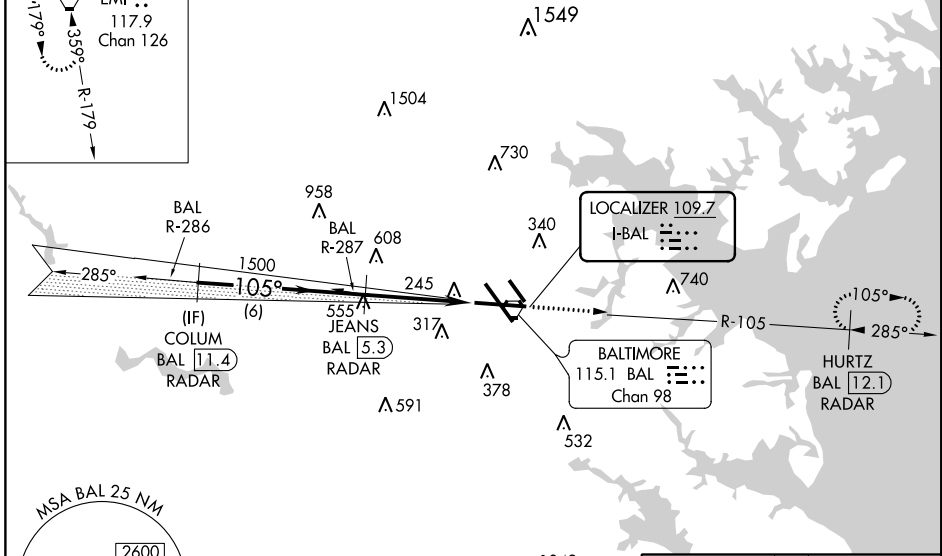


MISSED APPROACH: Climb to 2500 on BAL R-105
to HURTZ/BAL 12.1 DME/RADAR and hold.

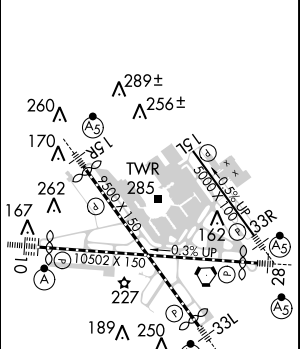
D-ATIS 115.1 127.8	POTOMAC APP CON (020°-100°) 119.7 290.475 (131°-180°) (101°-130°) 128.7 307.9 (181°-019°)	BALTIMORE TOWER 119.4 257.8	GND CON 121.9	CLNC DEL 118.05
------------------------------	---	---------------------------------------	-------------------------	---------------------------



RADAR REQUIRED



ELEV 146	D	TDZE 143
----------	----------	----------



CATEGORY	A	B	C	D
S-ILS 10	RA 191/14 150 DA 293			

SA CATEGORY I ILS - SPECIAL AIRCREW & AIRCRAFT CERTIFICATION REQUIRED

TDZ/CL Rwys 10 and 33L
REIL Rwys 15L and 33R
HIRL all rwys

NE-3, 24 MAY 2018 to 21 JUN 2018

NE-3, 24 MAY 2018 to 21 JUN 2018