

LOC I-BAL 109.7	APP CRS 105°	Rwy Idg 9952 TDZE 143 Apt Elev 146
---------------------------	------------------------	---

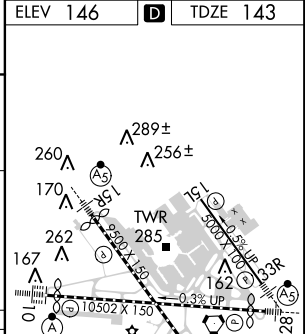
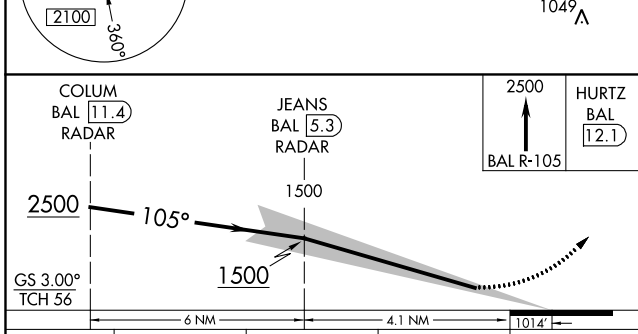
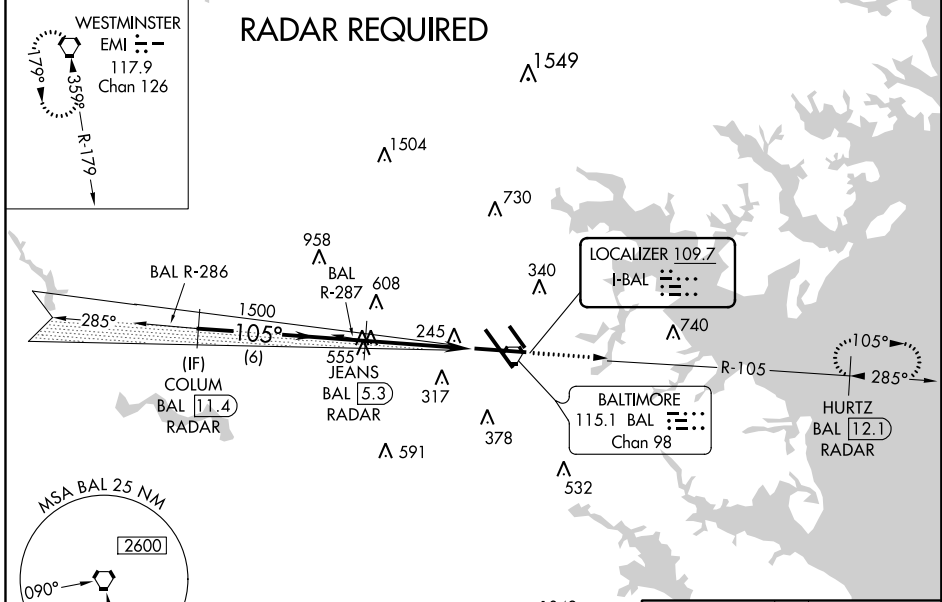
BALTIMORE/
WASHINGTON INTL THURGOOD MARSHALL (BWI)

ILS RWY 10 (CAT II & III)

	DME required.		ALSF-2 	MISSED APPROACH: Climb to 2500 on BAL R-105 to HURTZ/BAL 12.1 DME/RADAR and hold.		

D-ATIS 115.1 127.8	POTOMAC APP CON (020°-100°) 119.7 290.475 (131°-180°) (101°-130°) 128.7 307.9 (181°-019°)		BALTIMORE TOWER 119.4 257.8	GND CON 121.9	CLNC DEL 118.05
------------------------------	---	--	---------------------------------------	-------------------------	---------------------------

ALTERNATE MISSED APCH FIX CPDLC



CATEGORY	A	B	C	D
S-ILS 10	CAT II RA 102/12 100 DA 243			
S-ILS 10	CAT IIIa RVR 07			
S-ILS 10	CAT IIIb RVR 06			
S-ILS 10	CAT IIIc NA			

CATEGORY II & III ILS - SPECIAL AIRCREW & AIRCRAFT CERTIFICATION REQUIRED

TDZ/CL Rwy 10 and 33L
REIL Rwy 15L and 33R
HIRL all rwy's

NE-3, 24 MAY 2018 to 21 JUN 2018

NE-3, 24 MAY 2018 to 21 JUN 2018