

ANTHM THREE ARRIVAL (RNAV) Transition Routes

BALTIMORE, MARYLAND

NE-3, 24 MAY 2018 to 21 JUN 2018

BALTIMORE D-ATIS
115.1
POTOMAC APP CON
133.85 254.25

NOTE: RADAR required

NOTE: RNAV 1.

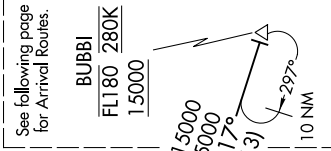
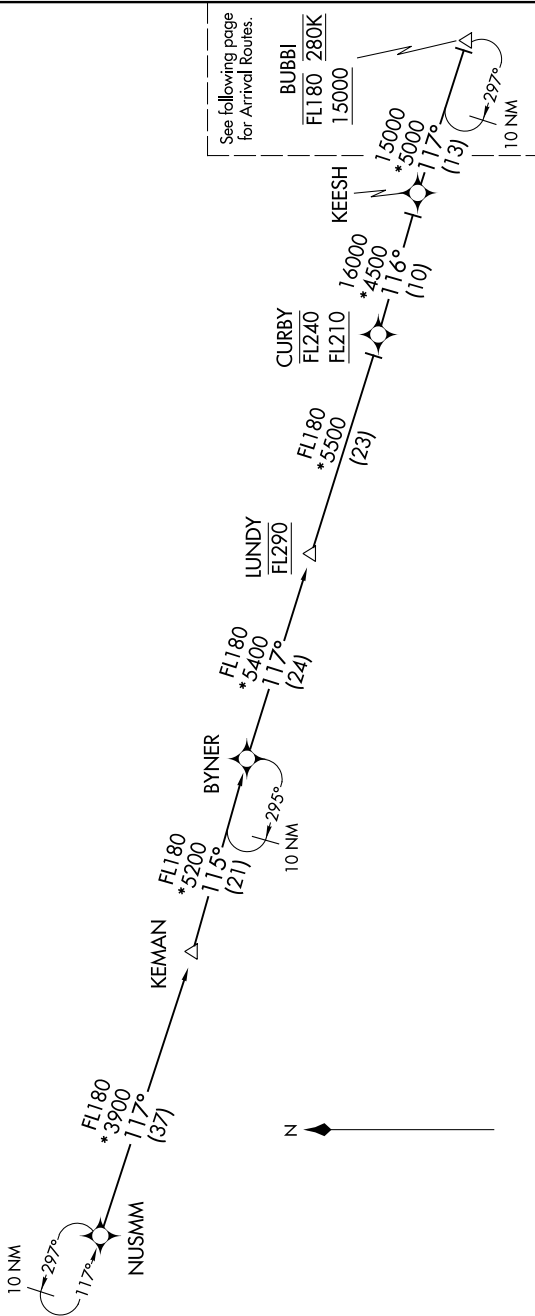
NOTE: DME/DME/IRU or GPS required.

NOTE: Turbojet aircraft only.

NOTE: Prohibited area (P56) 1.5 NM north of DCA avoid surface to 18000 MSL.

NOTE: ARTCC will issue landing direction assignment (east or west). Potomac

TRACON will issue runway assignments.



See following page for Arrival Routes.

(CONTINUED ON FOLLOWING PAGES)

NOTE: Chart not to scale.

KEESH TRANSITION (KEESH.ANTHM3)
KEMAN TRANSITION (KEMAN.ANTHM3)
NUSMM TRANSITION (NUSMM.ANTHM3)

NE-3, 24 MAY 2018 to 21 JUN 2018

ANTHM THREE ARRIVAL (RNAV) Transition Routes

BALTIMORE, MARYLAND