

|  |                        |   |
|--|------------------------|---|
| WAAS<br>CH <b>82202</b><br><b>W15A</b> | APP CRS<br><b>155°</b> | Rwy ldg <b>6224</b><br>TDZE <b>643</b><br>Apt Elev <b>644</b> |
|--|------------------------|---|

# RNAV (GPS) RWY 15

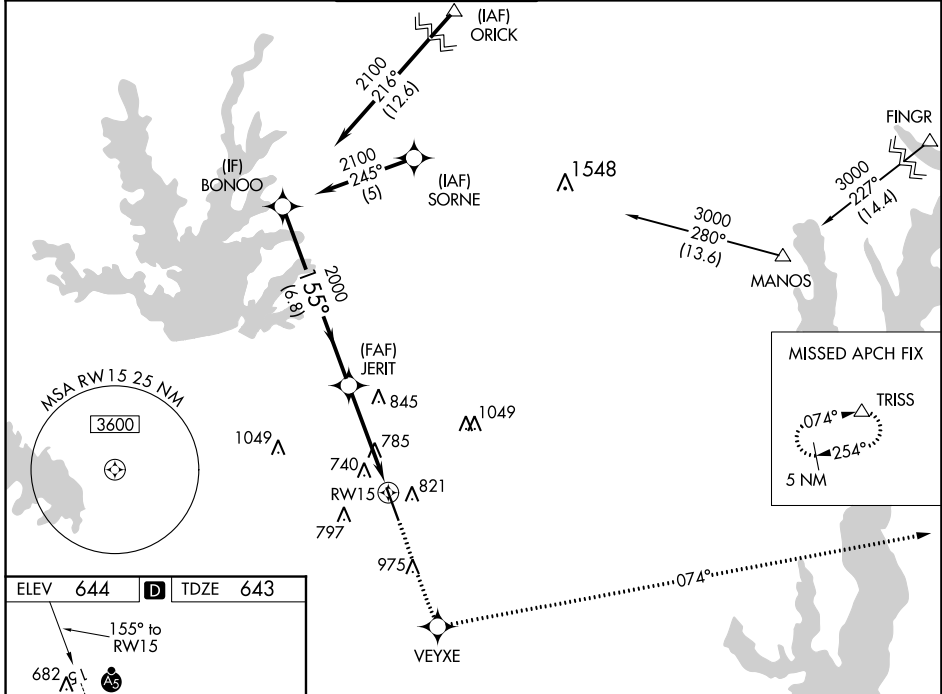
ADDISON (ADS)

▼ When local altimeter setting not received, use Dallas-Love Field altimeter setting and increase all DA 39 feet and MDA 40 feet, increase LNAV/VNAV all Cats and Circling Cat C/D visibility 1/4 mile. Inoperative table does not apply to LPV all Cats and LNAV Cats A/B. Baro-VNAV NA when using Dallas Love Field altimeter setting. For uncompensated Baro-VNAV systems, LNAV/VNAV NA below -16°C (4°F) or above 47°C (117°F). DME/DME RNP-0.3 NA. Helicopter visibility reduction below 1 SM NA. For inoperative MALSR increase LNAV Cat C visibility to 1/4.

MALSR

MISSED APPROACH: Climb to 3000 direct VEYXE and via 074° track to TRISS and hold.

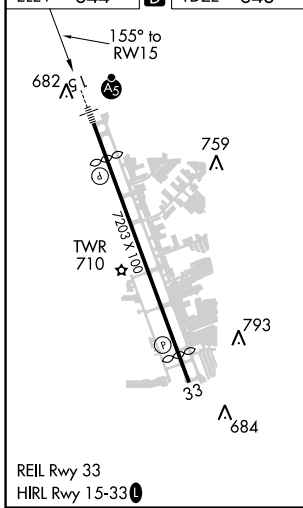
|                      |  |  |                         |                           |                         |
|----------------------|--|--|-------------------------|---------------------------|-------------------------|
| ATIS<br><b>133.4</b> | REGIONAL APP CON<br><b>124.3 282.275</b> | ADDISON TOWER ★<br><b>126.0 (CTAF) 239.0</b> | GND CON<br><b>121.6</b> | CLNC DEL<br><b>119.55</b> | UNICOM<br><b>122.95</b> |
|----------------------|--|--|-------------------------|---------------------------|-------------------------|



SC-2, 24 MAY 2018 to 21 JUN 2018

SC-2, 24 MAY 2018 to 21 JUN 2018

|                 |          |                 |
|-----------------|----------|-----------------|
| ELEV <b>644</b> | <b>D</b> | TDZE <b>643</b> |
|-----------------|----------|-----------------|



|  |                    |             |                         |                       |
|--|--------------------|-------------|-------------------------|-----------------------|
| Procedure Turn NA  | BONOO              | 3000        | VEYXE                   | TRISS                 |
|  | 2100               | 155°        | JERIT                   | tr 074°               |
| VGSi and RNAV glidepath not coincident (VGSi Angle 3.00/TCH 60). |                    |             |                         |                       |
| GP 3.00° TCH 52  |                    |             |                         |                       |
|  |                    | 2000        | RW15                    |                       |
|  |                    | 6.8 NM      | 4.1 NM                  |                       |
| CATEGORY   | A                  | B           | C                       | D                     |
| LPV DA   | 943-1 300 (300-1)  |             |                         |                       |
| LNAV/VNAV DA   | 1076-1 433 (500-1) |             |                         |                       |
| LNAV MDA   | 1100-1 457 (500-1) |             |                         |                       |
| CIRCLING   | 1200-1             | 556 (600-1) | 1240-1½<br>596 (600-1½) | 1280-2<br>636 (700-2) |