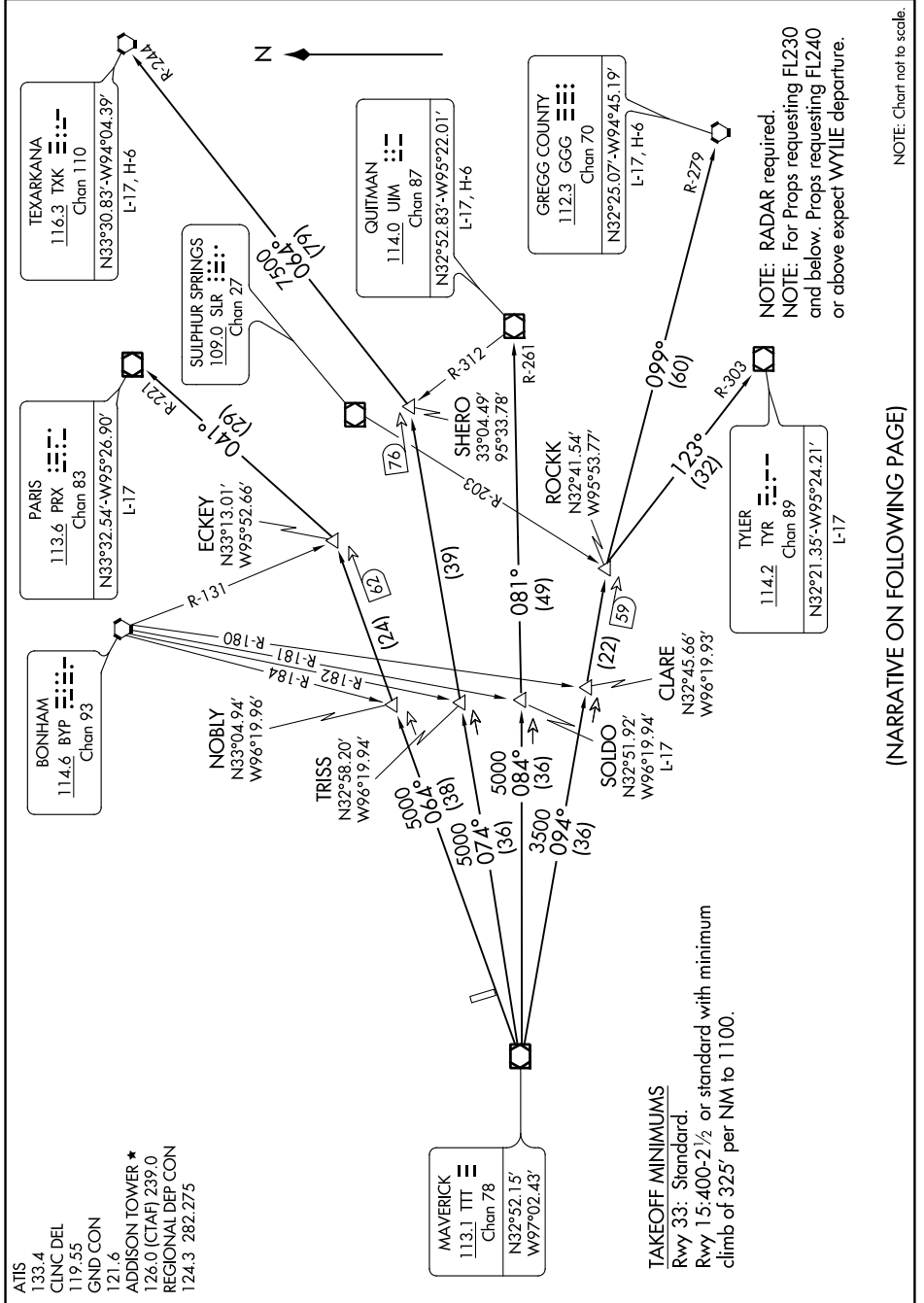


HUBBARD NINE DEPARTURE

DALLAS, TEXAS

SC-2, 24 MAY 2018 to 21 JUN 2018



ATIS 133.4
 CLNC DEL 119.55
 GND CON 121.6
 ADDISON TOWER * 126.0 (CTAF) 239.0
 REGIONAL DEP CON 124.3 282.275

MAVERICK
 113.1 TTT
 Chan 78
 N32°52.15'
 W97°02.43'

TAKEOFF MINIMUMS
 Rwy 33: Standard.
 Rwy 15: 400-2½ or standard with minimum
 climb of 325' per NM to 1100.

NOTE: RADAR required.
 NOTE: For Props requesting FL230
 and below, Props requesting FL240
 or above expect WYLIE departure.

(NARRATIVE ON FOLLOWING PAGE)

NOTE: Chart not to scale.

SC-2, 24 MAY 2018 to 21 JUN 2018

HUBBARD NINE DEPARTURE

(HUBB9.TTT) 31MAR16

DALLAS, TEXAS

ADDISON (ADS)